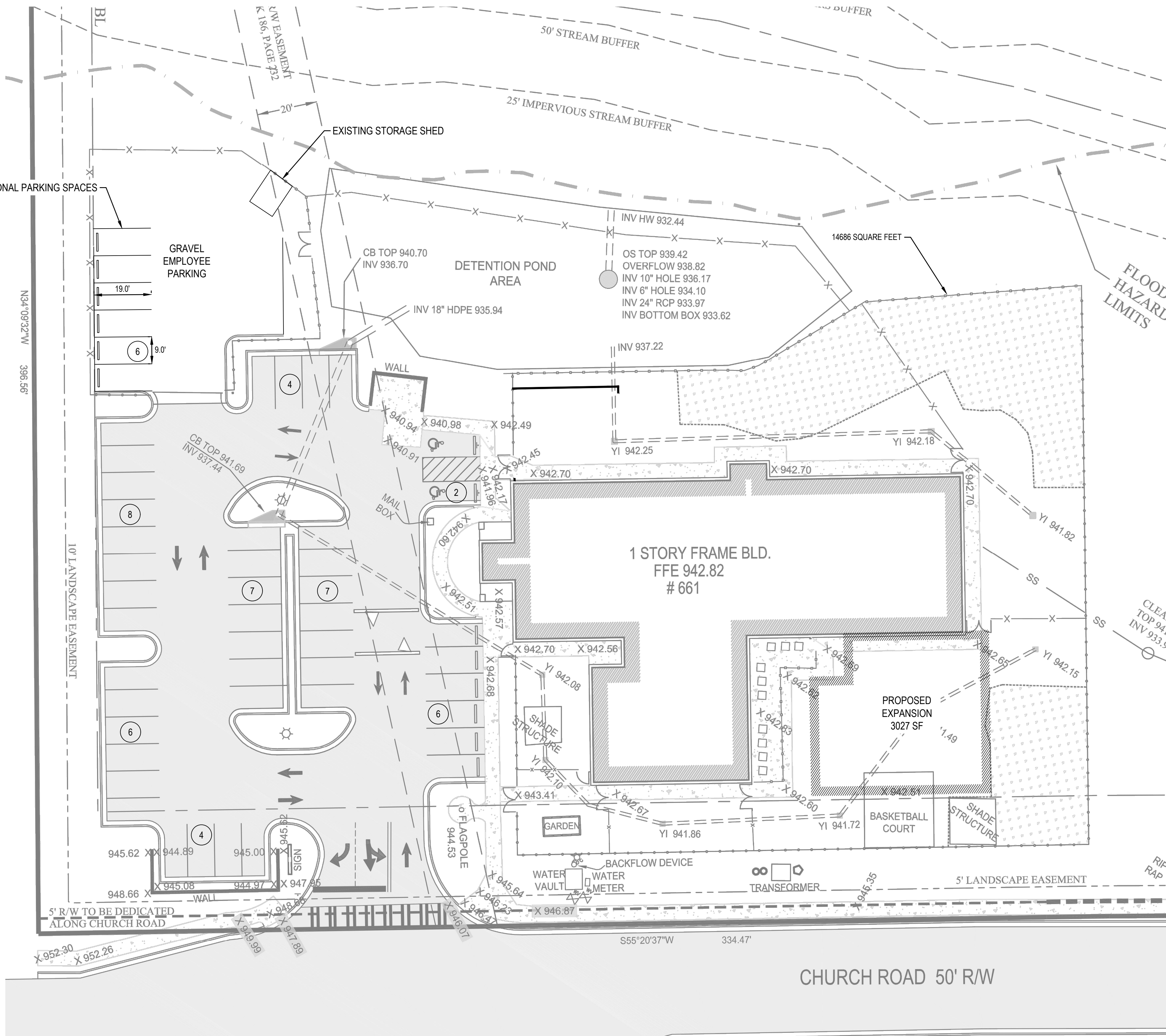


REQUIRED PARKING SPACES W/ EXPANSION		
PROPOSED ROOM CAPACITY	216 STUDENTS	*PARKING SPACE = $(\frac{1}{9}) * 216 = 24$ SPACES
PROPOSED STAFF REQUIRED	26 STAFF	**PARKING SPACE = $1 * 26 = 26$ SPACES
		TOTAL REQUIRED PARKING SPACES = 50 SPACES

*REZONING IN 2008 AND ZONING AMENDMENT IN 2012 REQUIRES (1) PARKING SPACE PER (9) STUDENTS
**REZONING IN 2008 AND ZONING AMENDMENT IN 2012 REQUIRES AND (1) SPACE PER STAFF MEMBER.

PARKING SUMMARY
EXISTING PARKING 42 - REGULAR SPACES (9' x 19') 2 - H/C SPACES
PROPOSED PARKING 48 - REGULAR SPACES (9' x 19') 2 - H/C SPACES

* PROPOSED PARKING BASED ON NEW 3027 SF EXPANSION



1 PROPOSED PARKING LOT SCHEMATIC

Scale: 1" = 20'

