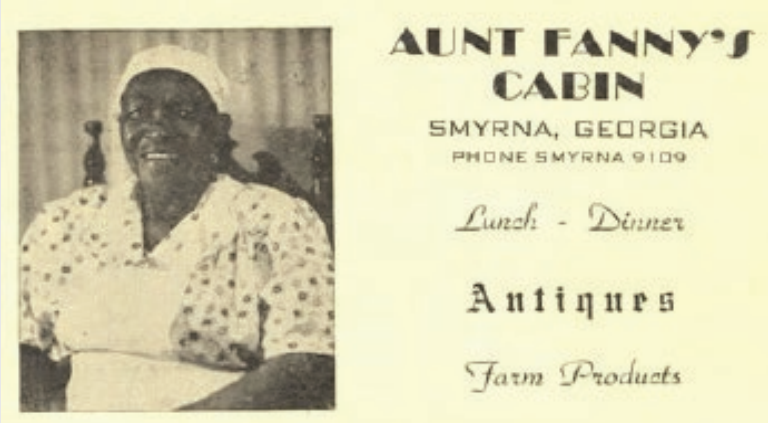


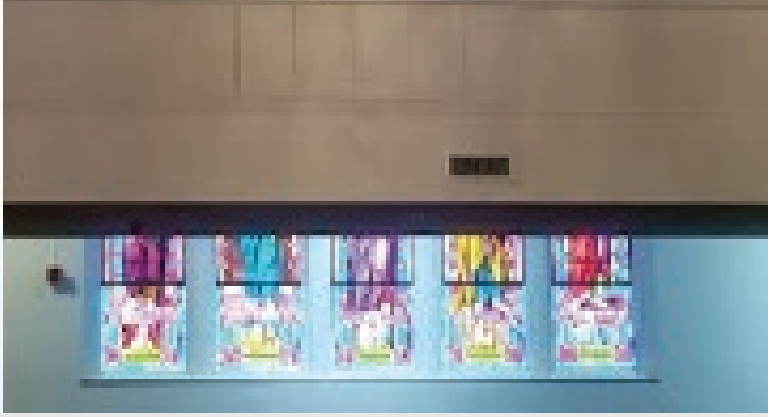
INSPIRATION | LIFE

We're cognizant of the history of the Cabin in relationship to Fanny Williams and seek to employ her greater community accomplishments as a driver for our ideation process. We seek to naturally take inspiration from architectural elements of the Cabin as complimentary design aesthetics, and build upon materiality + form from her civic contributions to the Marietta Negro Hospital and Wheat Street Baptist Church.



INSPIRATION | CIVIC + ACTIVISM

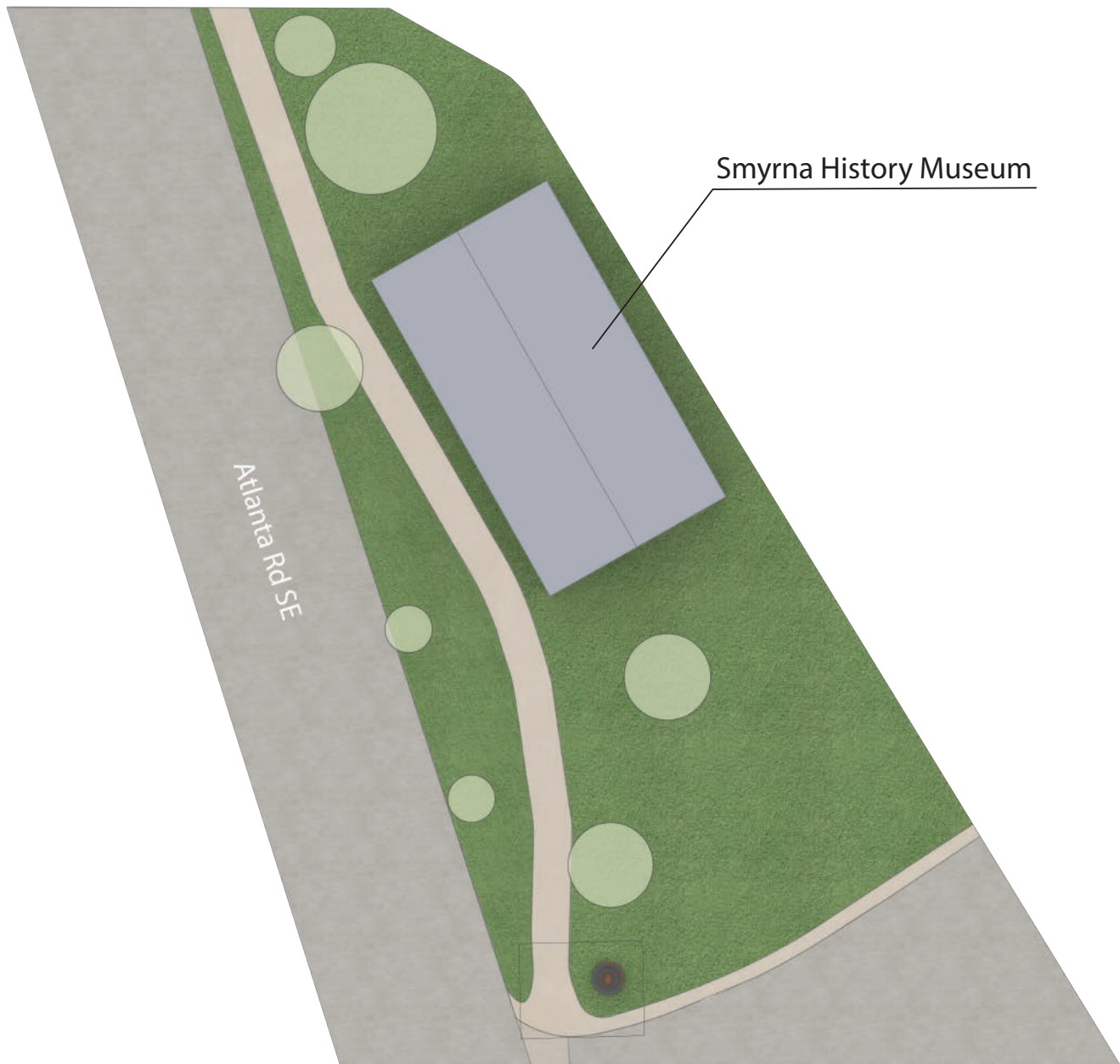
From the groundbreaking for Wheat Street Baptist Church we are inspired to consider how materiality, texture, and color could all work together to narrate an uplifting and honoring memorial to Ms Williams' story. There's a natural connection as well between the soil that grew the vegetables she used for her homemade recipes and the foundations she laid as a civic icon. We also would like to consider how aspects of color and light can be integrated into the overall memorial plaza through lasting legacies she helped create, such as the stained glass windows of Wheat St Baptist.



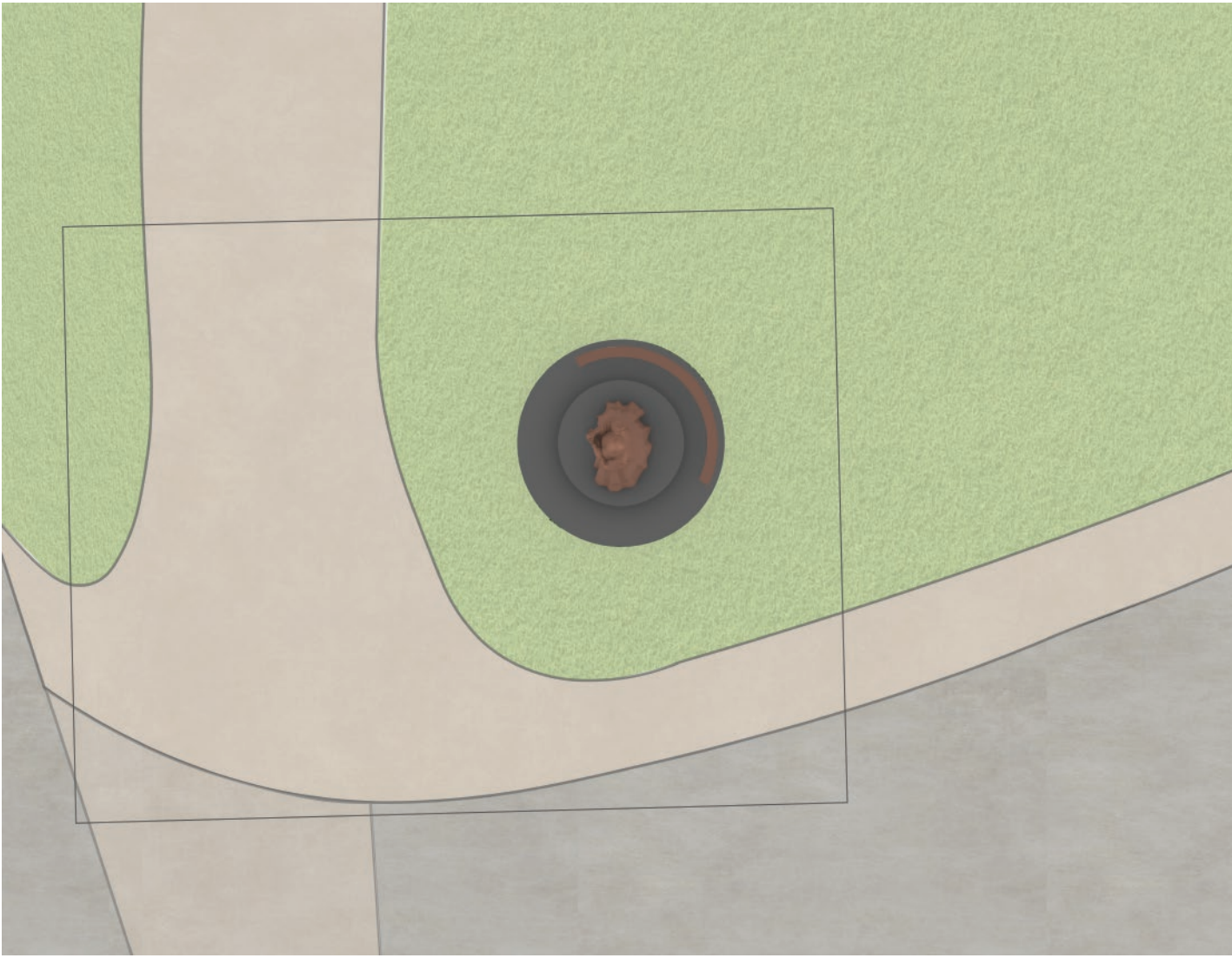
David Wilson
<https://www.davidwilsonpublicart.com/>



Stephen Hayes
<https://www.stephenhayescreations.com/>



Context Plan



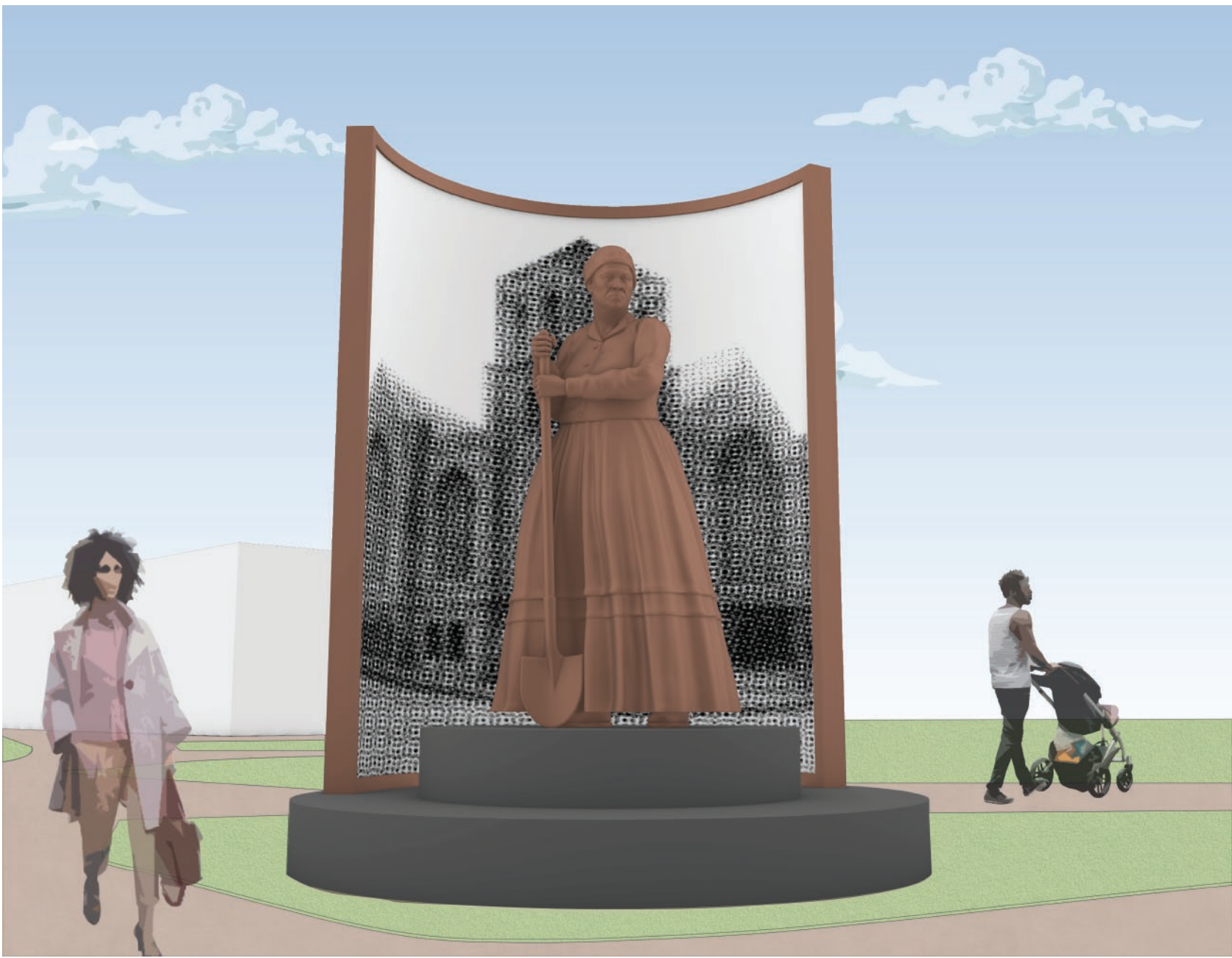
Site Plan

"In the sweet by and by
We shall meet on that beautiful shore
In the sweet by and by
We shall meet on that beautiful shore
We shall sing on that beautiful shore
The melodious songs of the blessed
And our spirit shall sorrow no more
Not a sign for the blessing of rest."

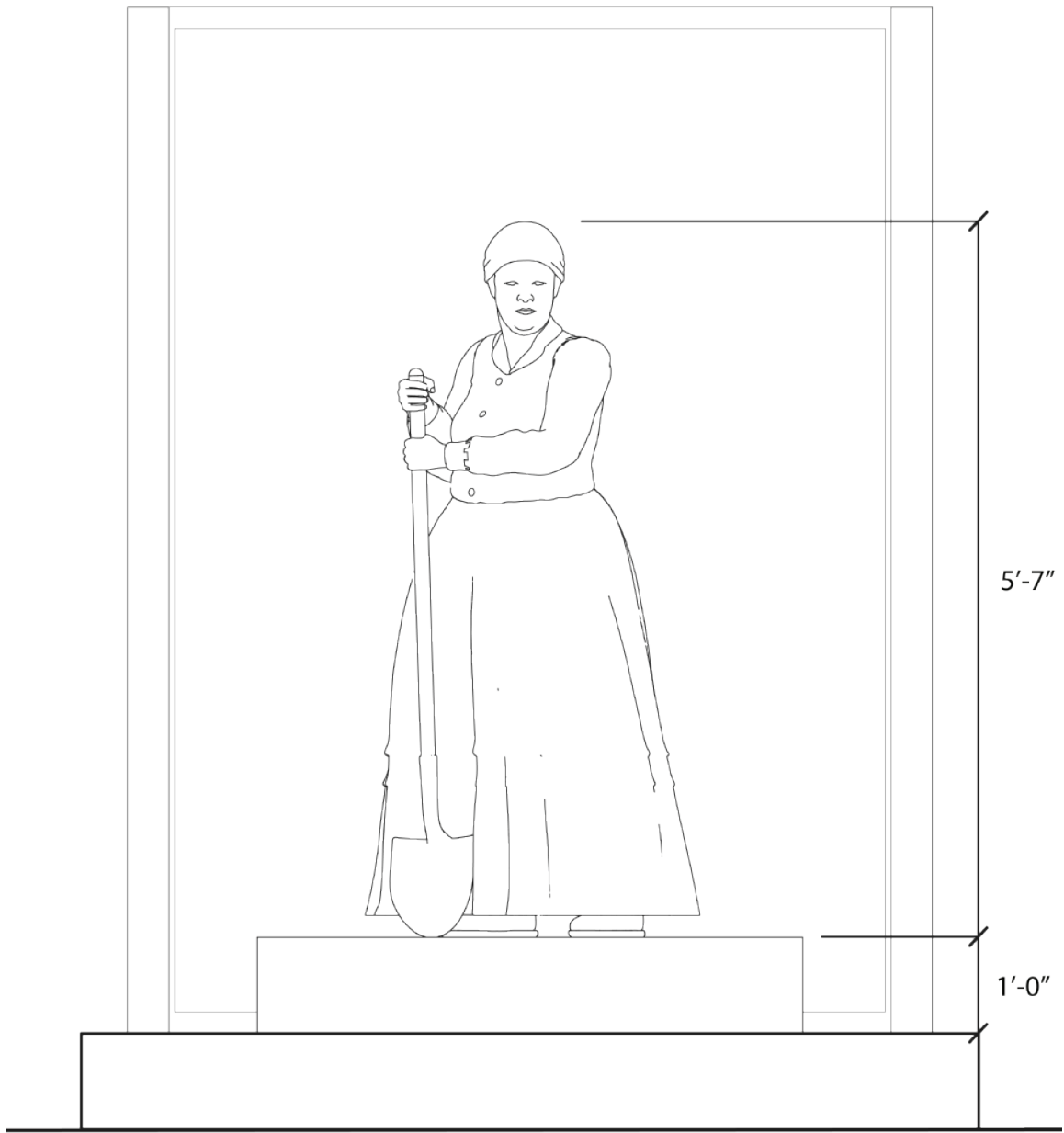
– Hymn by Joseph Philbrick Webster



Fanny Williams Hospital Groundbreaking



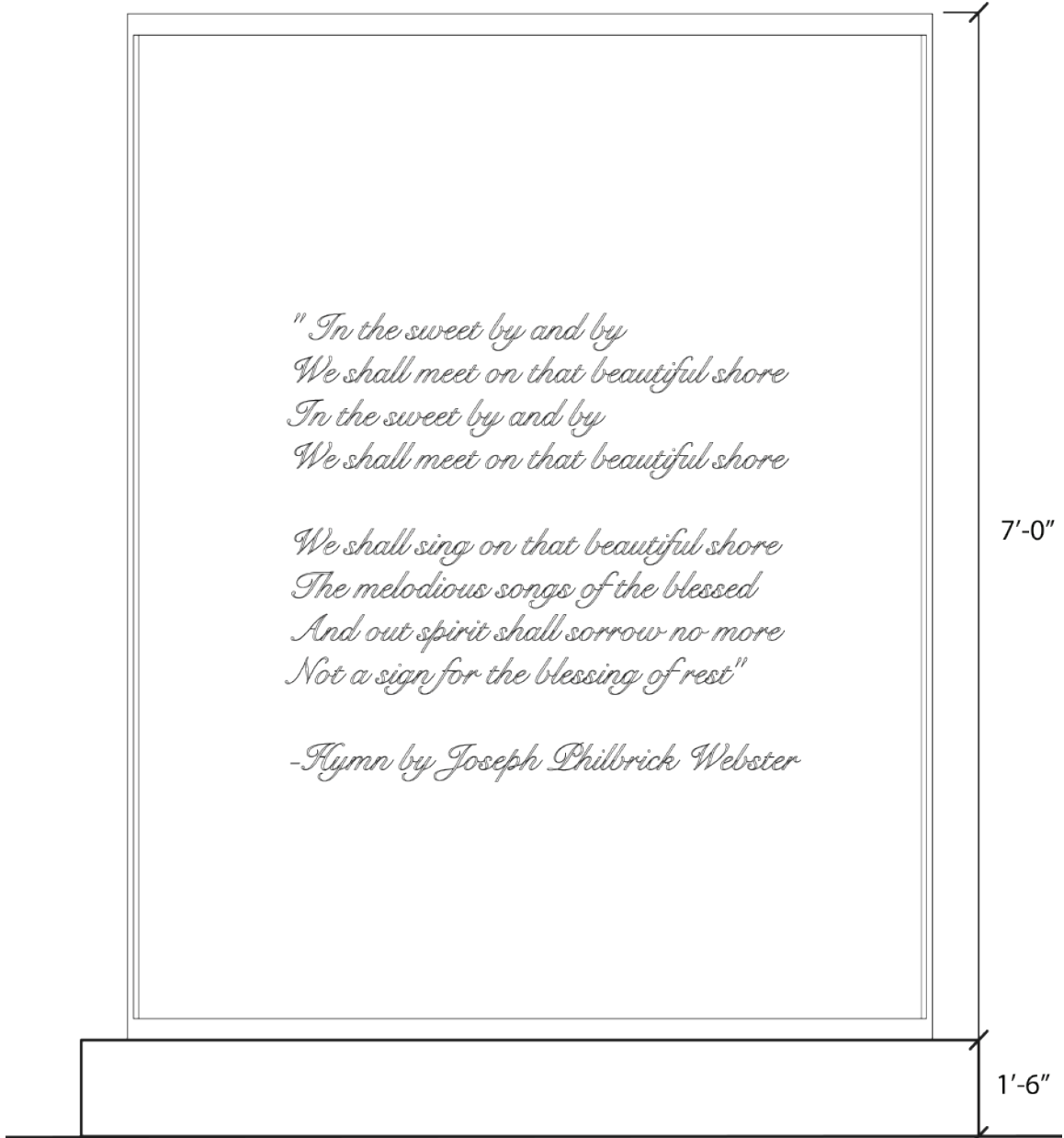
Front Perspective



Front Elevation



Rear Perspective



Rear Elevation