

FOR
REFERENCE
ONLY

3808 N. Sullivan Bldg. #7 Spokane, WA 99216

CXT
Precast Products
901 N. Highway 77 Hillsboro, TX 76645

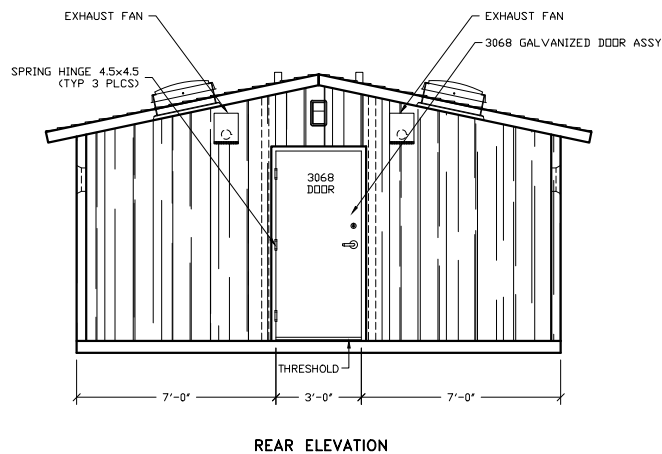
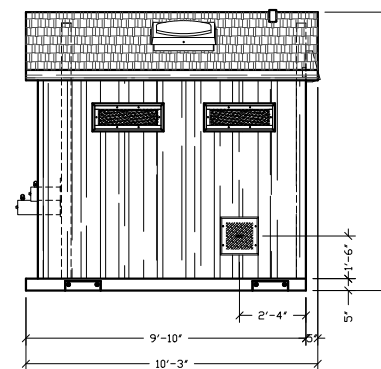
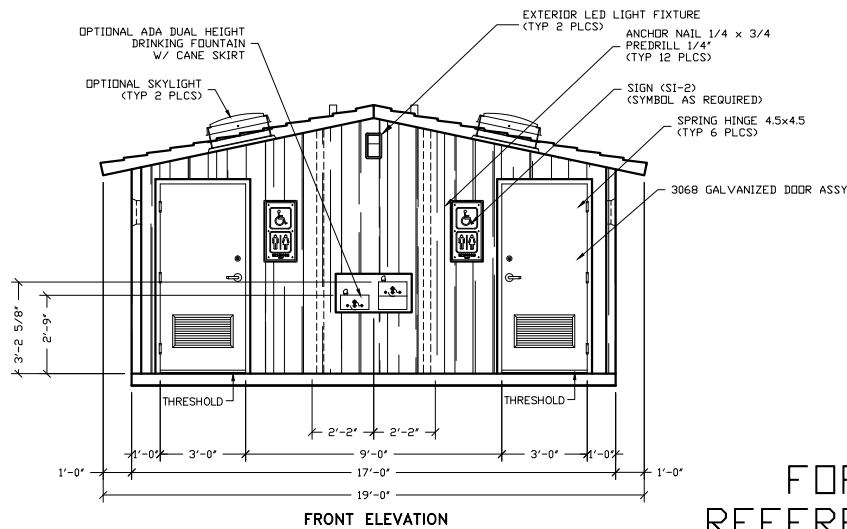
PROJECT FILE
CORTEZ
CXT STANDARD BUILDING

NOTICE
The information contained herein is proprietary and the exclusive property of CXT Incorporated. The information may only be used by the original recipient for the purpose intended. Reproduction or distribution of this information is strictly prohibited without the prior written consent of CXT Incorporated. By allowing use of this information, CXT Incorporated grants no warranty, express or implied, including a warranty of merchantability or of fitness for a particular purpose.

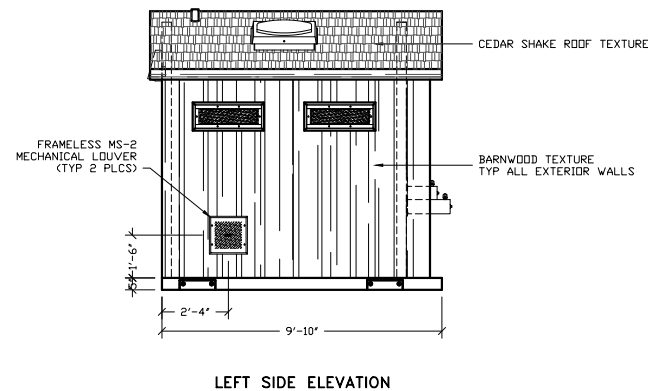
REV.	DESCRIPTION	DATE	APPROVED	DATE
1	SCALE 1/2"=1'-0"	04-30-16		
DRAWN	FILE NO.	PD-CR03		
CHECKED	PLOT	24		

FLOOR PLAN

DWG NO. CR-03 SHEET REV.



FOR
REFERENCE
ONLY



EMBEDDED MATERIALS	
ITEM	QTY
3068 DOOR ASSEMBLY	3
SPRING HINGE 4.5x4.5	9
SI-2	2
ANCHOR NAIL 1/4x3/4	12

CU. FT. CONC.	SO. FT. W.W.F.
---------------	----------------

APPROXIMATE WEIGHT

3808 N. Sullivan Bldg. #7 Spokane, WA 99216

Precast Products
 901 N. Highway 77 Hillsboro, TX 76645

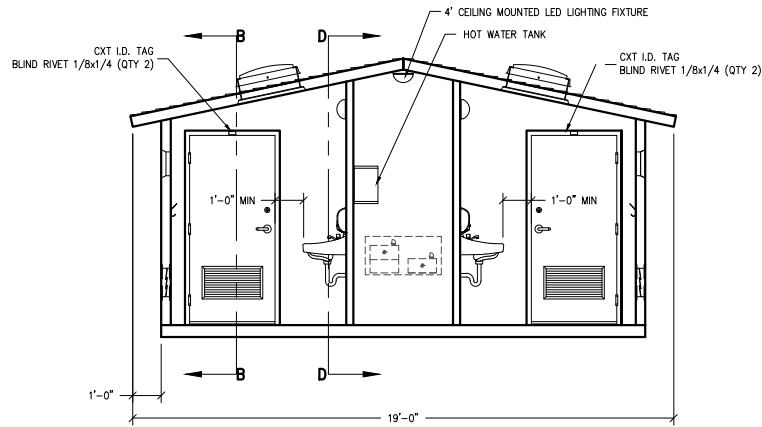
PROJECT TITLE
CORTEZ
 CXT STANDARD BUILDING

NOTICE
 The information contained herein is proprietary and the exclusive property of CXT Incorporated. The information may only be used by the original recipient for the purpose intended. Reproduction or distribution of this information is strictly prohibited without the prior written consent of CXT Incorporated. By allowing use of this information, CXT Incorporated grants no warranty, express or implied, including a warranty of merchantability or of fitness for a particular purpose.

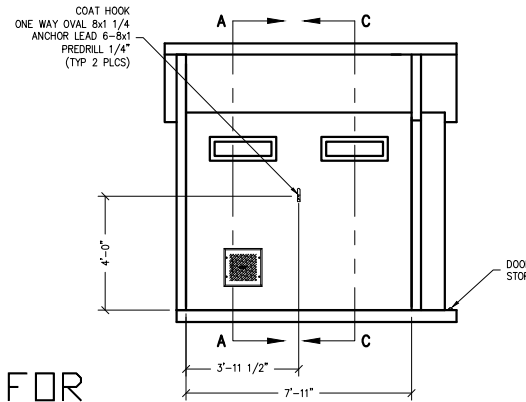
CXT Incorporated			
REV.	DESCRIPTION	APPROVAL	DATE
1	1/1A-11-01	DATE	04-10-16
DRAWN	FILE NO.	PO-CH04	
CHECKED	PROJECT	48	

BUILDING ELEVATIONS

DWG NO.	SHEET	REV.
CR-04		

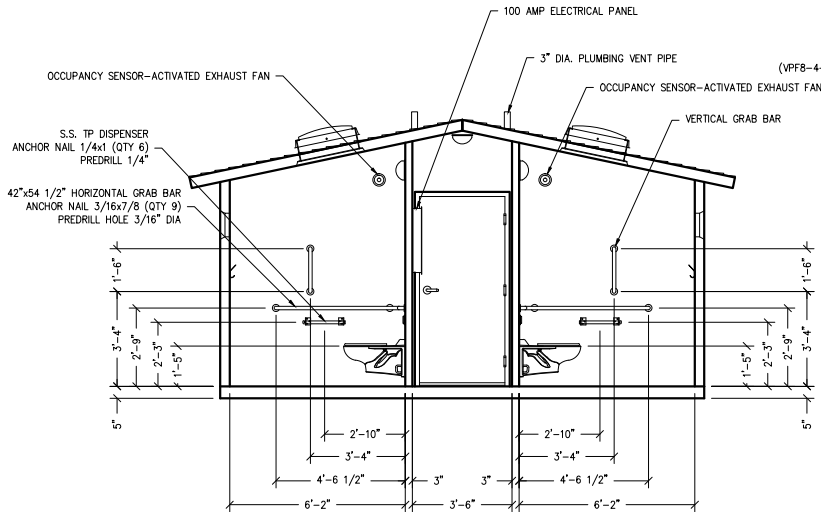


SECTION A - A

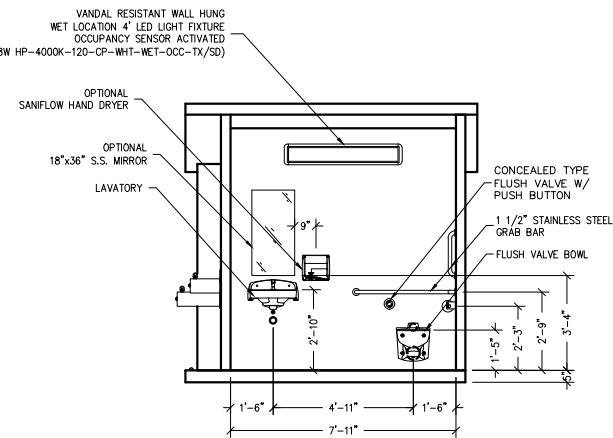


SECTION B - B

FOR
REFERENCE
ONLY



SECTION C - C



SECTION D - D

EMBEDDED MATERIALS	
ITEM	QTY
BLIND RIVET 1/8x1/4	4
GRAB BAR	2
TP DISPENSER	2
TOILET PAPER ROLL	6
COAT HOOK	2
DOOR STOP	2
ONE WAY OVAL 8x1 1/4	4
ANCHOR LEAD 6-8x1	4
CXT I.D. TAG	2
ANCHOR NAIL 1/4x1	12
ANCHOR NAIL 1/4x3/4	8
ANCHOR NAIL 3/16x7/8	30

CU. FT. CONC. SQ. FT. W.W.F.

APPROXIMATE WEIGHT

3808 N. Sullivan Bldg. #7 Spokane, WA 99216
CXT
Precast Products
 901 N. Highway 77 Hillaboro, TX 76645

PROJECT TITLE
CORTEZ
 CXT STANDARD BUILDING

NOTICE
 The information contained herein is proprietary and the exclusive property of CXT Incorporated. The information may only be used by the original recipient for the purpose intended. Reproduction or distribution of this information is strictly prohibited without the prior written consent of CXT Incorporated. By allowing use of this information, CXT Incorporated grants no warranty, express or implied, including a warranty of merchantability or of fitness for a particular purpose.

REV.	DESCRIPTION	DATE	APPROVED
SCALE	1/4"=1'-0"	DATE	04-30-16
DRAWN	FILE NO.	PG-CH05	
CHECKED	FILED	48	

INTERIOR ELEVATIONS

DWG NO. CR-05 SHEET REV.