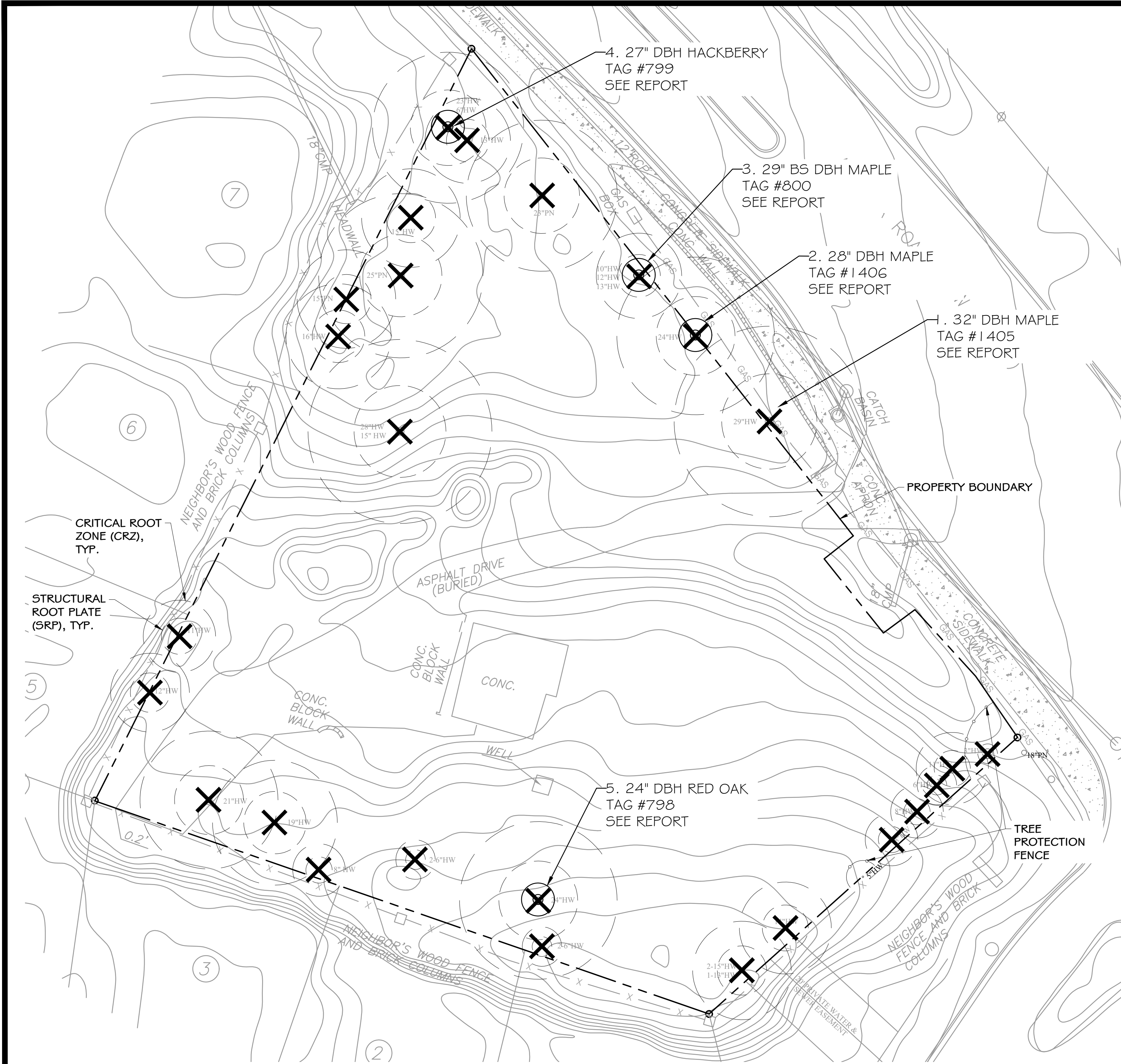
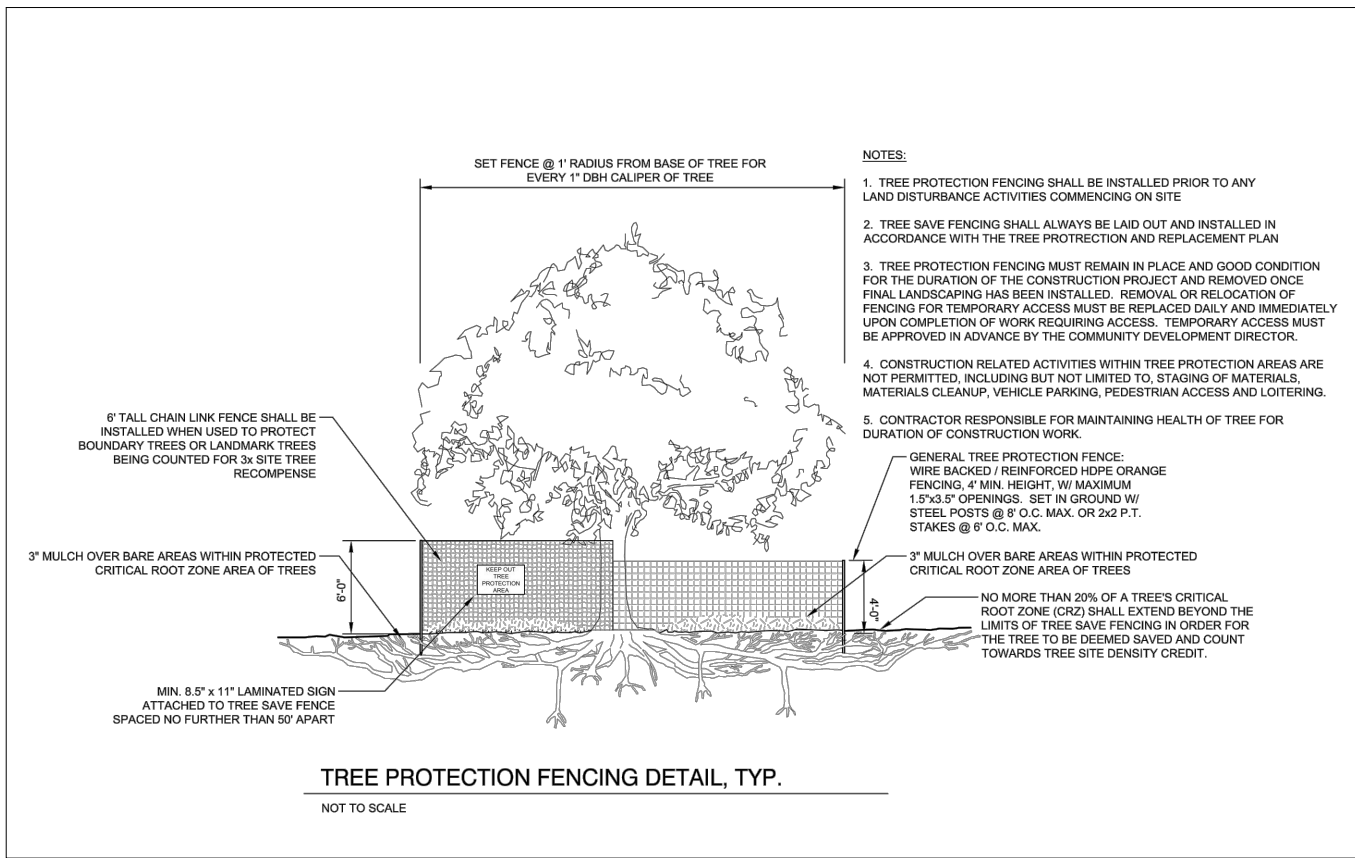
 Know what's **below.**  
**Call** before you dig.  
Dial 811  
Or Call 800-282-7411





**EXISTING VEGETATION NOTES:**

1. THINNING IS ALLOWED AND MAY INCLUDE MANUAL REMOVAL OF NON-SPECIMEN TREES WITHIN THE CRITICAL ROOT ZONE OR DRIPLINE OF THE SPECIMEN TREE IN THE LANDSCAPE INSTALLATION PHASE OF DEVELOPMENT ONLY. THINNING INCLUDES MANUAL REMOVAL (NO MOTORIZED/ WHEELED OR TRACK VEHICLES ALLOWED WITHIN THE CRITICAL ROOT ZONE OF THE SPECIMEN TREE).
2. NON-VEGETATIVE MATERIAL TO BE REMOVED MANUALLY.
3. A COMMERCIAL APPLICATOR LICENSE AND A PESTICIDE CONTRACTOR LICENSE ARE REQUIRED BY THE CONTRACTOR IF THE USE OF HERBICIDES ARE NECESSARY FOR NOXIOUS PLANT MATERIAL REMOVAL.
4. TOPPING TREES IS NOT ALLOWED. TREES REMOVED OR HAVING THEIR TOPS CUT AFTER COMPLIANCE WITH THIS ORDINANCE SHALL BE REPLACED WITH THE EQUIVALENT INCHES OF REMOVED TREES.
5. ALL BUFFERS AND TREE SAVE AREAS ARE TO BE CLEARLY IDENTIFIED WITH PROTECTIVE FENCING PRIOR TO COMMENCEMENT OF ANY LAND DISTURBANCE.
6. ALL GRASSED AREAS TO BE SODDED.
7. ALL BUFFERS AND TREE SAVE AREAS ARE TO BE CLEARLY IDENTIFIED WITH PROTECTIVE FENCING PRIOR TO COMMENCEMENT OF ANY LAND DISTURBANCE.
8. PLANNER TO VERIFY THAT TREE PROTECTION FENCE IS UP AROUND SPECIMEN TREES PRIOR TO PERMIT ISSUANCE.
9. TREE PROTECTION FENCES MUST HAVE SIGNAGE IN BOTH ENGLISH AND SPANISH LANGUAGE THAT READS "STAY OUT", "NO ENTRADA", AND "TREE SAVE", "SALVE UN ARBOL", POSTED ON FENCE EVERY 20 FEET WITH A MINIMUM OF FOUR SIGNS.



**LEGEND:**



EXISTING TREE TO BE REMOVED

**EXISTING DENSITY FACTOR**

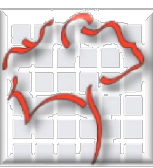
.95 AC. X 100 INCHES = 95 INCHES REQUIRED  
0 INCHES TO REMAIN UNDISTURBED, SEE TABLE BELOW  
0 INCHES REMAINING < 95 INCHES REQUIRED  
1.04 INCHES PROVIDED, SEE SHEET T.2 TREE PLAN

NO SPECIMEN TREES ON SITE

**MODIFIED ARBORIST REPORT FOR:**

#3410 Atlanta Road, Smyrna, GA  
City of Smyrna, Georgia

Prepared for:  
**Bill Lobe**  
Visual Inspection only



Prepared by:  
T.J. Schell, LLC  
Landscape Architects  
And Certified Arborists  
2985 Gordy Parkway, Suite 422  
Marietta, GA 30066  
teresa@tjschell.com  
Cell 770-361-2319

Teresa H. Eldredge, PLA, ISA  
Certified Arborist  
ISA SO-5442A  
August 9<sup>th</sup>, 2022

Previously cleared site with perimeter trees remaining.

PROJECT:

**NEIGHBOR'S  
FEED & SEED  
REZONING TREE  
PLAN**

LOCATION:

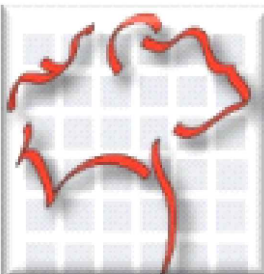
**3410 ATLANTA ROAD  
LAND LOT  
DISTRICT  
SMYRNA, GA**

OWNER/DEVELOPER:

**BILL LOBE  
404.664.7853**

PLCEA  
MARK LEE, PE  
770-435-2576  
MARK.LEE@PLCEA.COM

CONSULTANT:



**TJ SCHELL, LLC**

Landscape Architect • Consulting Arborist

770.361.2319  
teresa@tjschell.com

2985 Gordy Pkwy., Ste. 422, Marietta, GA 30066

SEAL:



**TERESA H. ELDRIDGE  
ISA - SO-5442A**

SCALE 1" = 20'



REVISIONS DATE

DRAWN BY:

JURISDICTION:

DATE:

SHEET TITLE:

**EXISTING  
CONDITIONS**

SHEET NUMBER: **T.1**



**4. Hackberry – 27" DBH – (Tag # 799) – Vertical cavity hollow. Request Not Specimen**



**5. Red Oak – 24" DBH – (Tag # 798) – 15-20% lean, vines choking, and old wounds on rear base. Request Not Specimen (Fair Condition)**



Know what's below.  
Call before you dig.  
Dial 811  
Or Call 800-282-7411