

REFERENCE PLAT:
FINAL PLAT FOR BENTLEY PARK UNIT ONE BY TRAVIS FRUITT
& ASSOCIATES, P.C. AND RECORDED IN P.B. 177 PAGES 42 & 43.

FLOOD HAZARD NOTE
This property does not lie within a flood hazard zone
as defined by the F.I.R.M. Flood Insurance Rate Map of
COBB COUNTY, Community Panel Number 13067C0070 F
dated August 18, 1992.

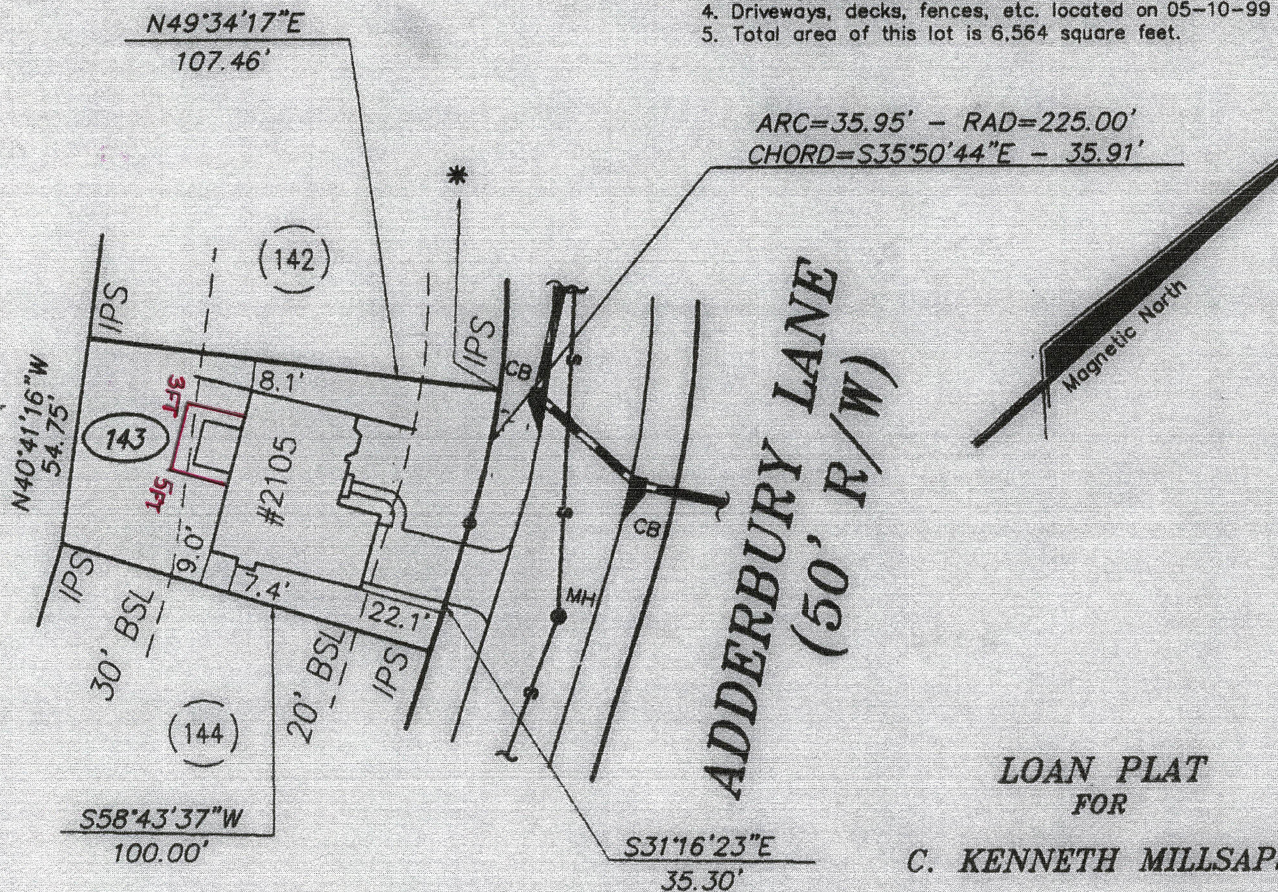
This map or plat has been calculated for closure and is found to be
accurate within 1 foot in 10,000+ feet.

This plat has been prepared using a theodolite reading directly to
5 seconds and an electronic distance measuring device reading
directly to 1. one thousandth of a foot.

The field data upon which this map or plat is based has a closure
precision of (1) foot in 31,848 feet and an angular error of
1.4 seconds per angle point, and was adjusted using compass rule.

Notes:

1. This survey was authorized by Pulte Homes.
2. This survey is not valid unless seal is signed in black ink.
3. Primary structure(s) located on 03-02-99.
4. Driveways, decks, fences, etc. located on 05-10-99.
5. Total area of this lot is 6,564 square feet.

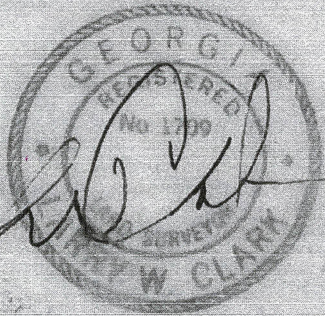


* 154.92" TO THE R/W OF
ADDERBURY COURT (50' R/W)
IF EXTENDED TO FORM AN ANGLE POINT.

LEGEND

JB JUNCTION BOX
MH MANHOLE
CB CATCH BASIN
DE DRAINAGE EASEMENT
-S- SAN. SEWER LINE
SSE SAN. SEWER EASEMENT
R/W RIGHT-OF-WAY
BSL BUILDING SETBACK LINE
IPS 1/2" IRON PIN SET
IPF 1/2" IRON PIN FOUND
FH FIRE HYDRANT
DI DROP INLET

FOR THE FIRM
TRAVIS FRUITT & ASSOC., P.C.



**LOAN PLAT
FOR**

C. KENNETH MILLSAPS

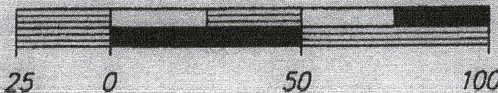
LOT 143 BLOCK A
**BENTLEY PARK
UNIT ONE**

CITY OF SMYRNA
LAND LOT 191
17TH DISTRICT - 2ND SECTION
COBB COUNTY, GEORGIA
SCALE: 1"=50' MAY 20, 1999

TRAVIS FRUITT & ASSOCIATES, P.C.
Consultants, Engineers, Surveyors
& Landscape Architects

5555 Oakbrook Parkway - Suite 280
Norcross, Georgia 30093
Phone: (770) 416-7511 Fax: (770) 416-6759
e-mail: www.travisfrutt.com

GRAPHIC SCALE - IN FEET



MC JN: 98-555 CN: L-143-PL PULTE