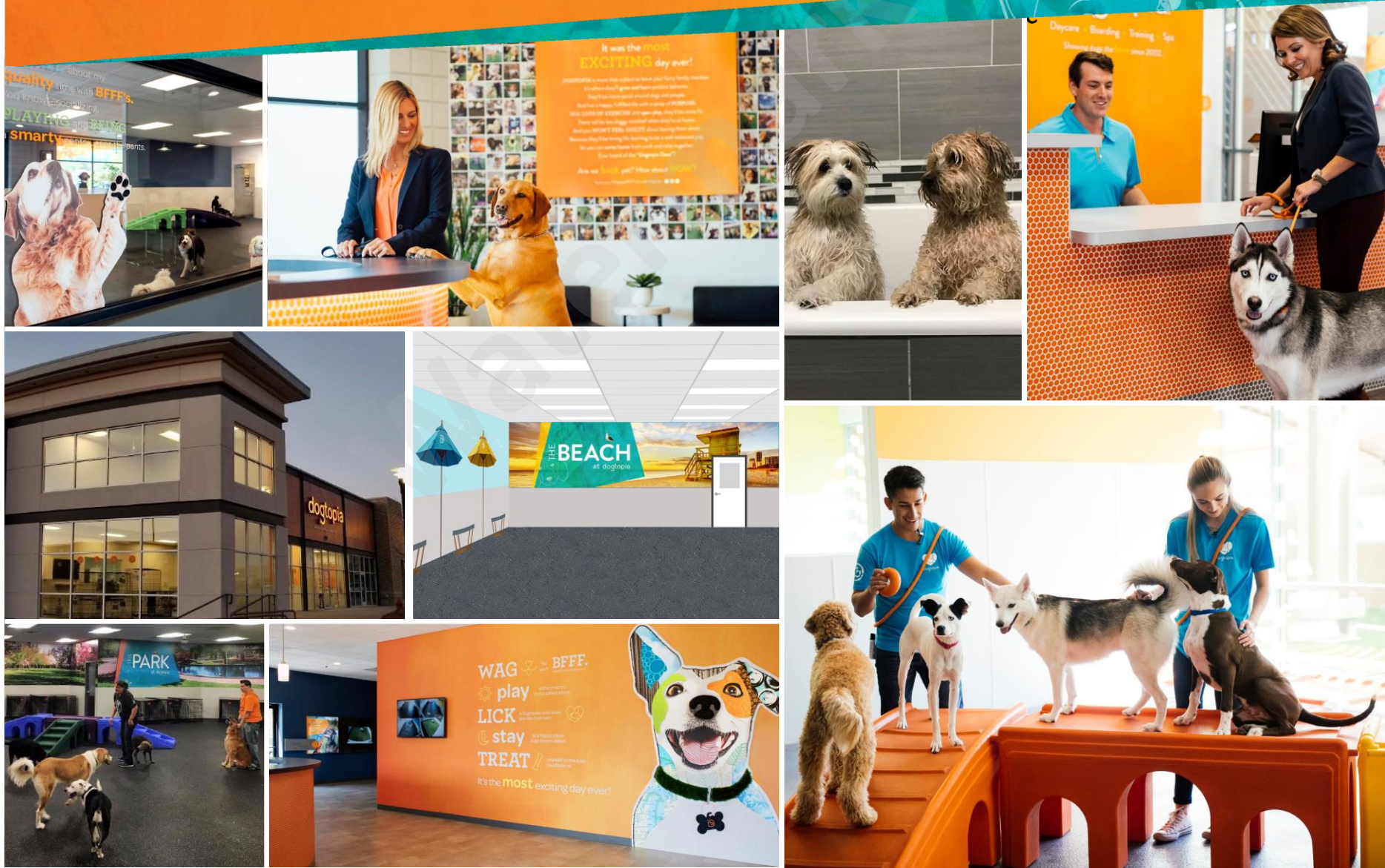




Dogtopia of Smyrna
Request Presentation –
Supplementary Outdoor
Materials
1717 Spring St SE

Dogtopia is not your typical dog daycare and boarding facility. It's high-end and best-in-class

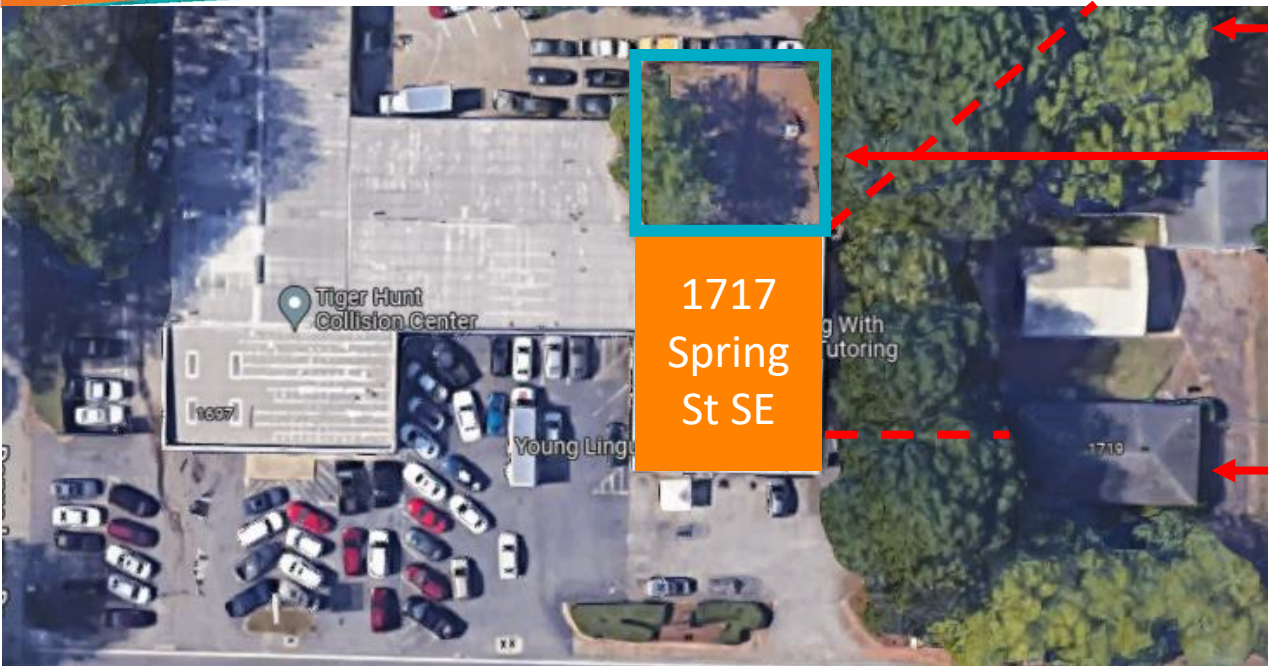


Brand Footprint

200+ Locations Across the U.S. with Great Curb Appeal



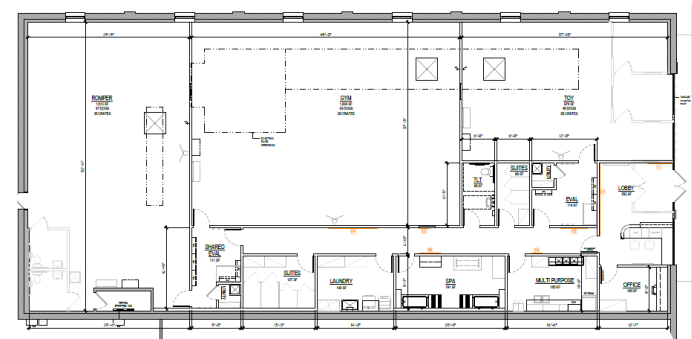
Dogtopia is requesting a variance to reduce the setback and to include an outdoor run-on property



Distance to 2756 Scott Ct
= ~138'

Proposed outdoor run in the
existing child daycare outdoor
area

Distance to 1719 Spring St SE
= ~68'



Dogtopia outdoor areas are clean and aesthetically pleasing

Interior look & feel:

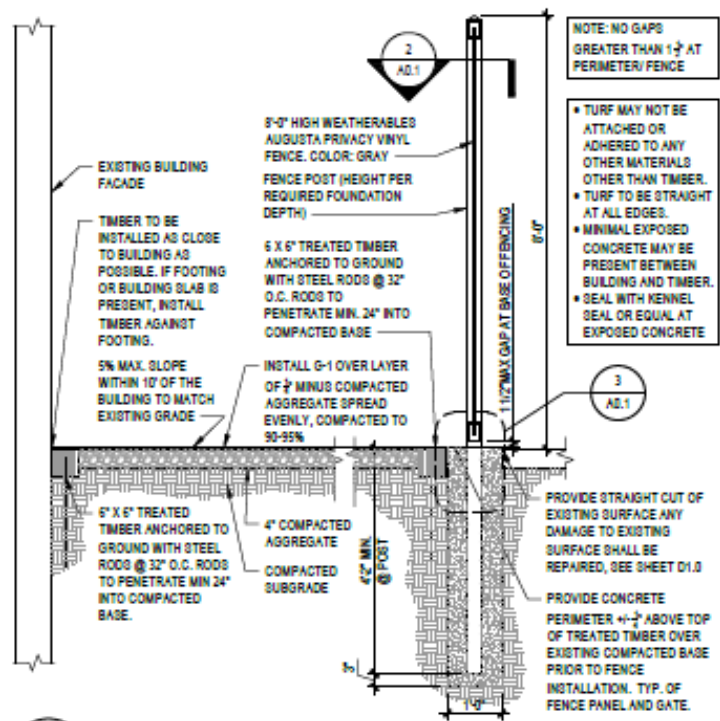


Exterior look & feel:

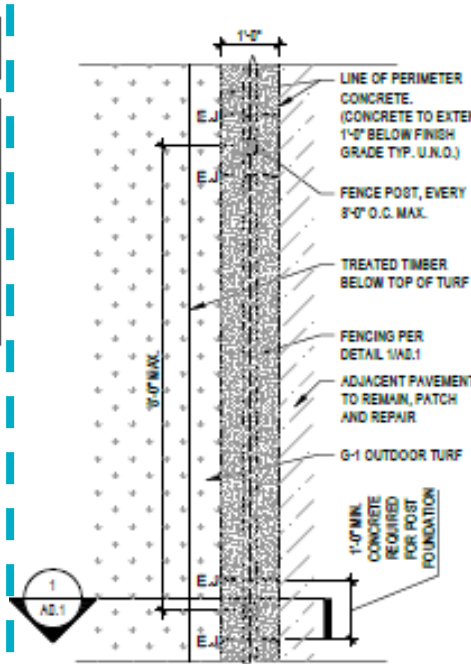


Dogtopia outdoor areas are well-built to be durable and secure

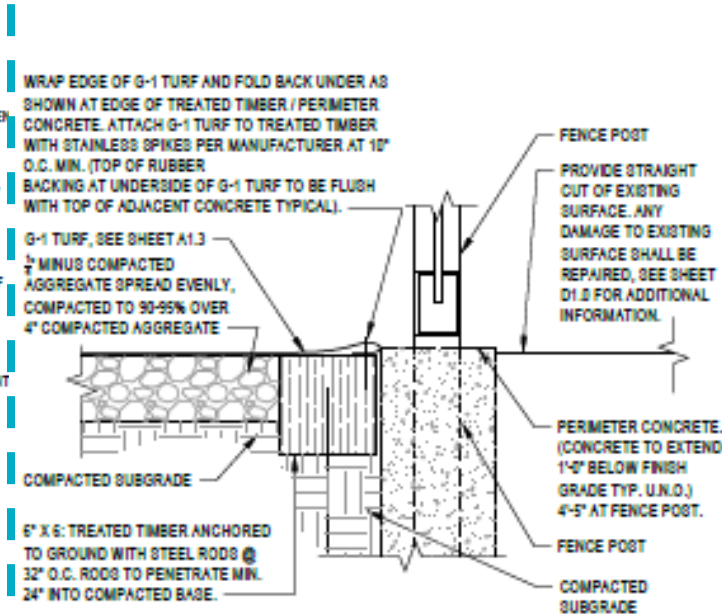
1 Illustrative Play Area Fence Section Detail:



2 Illustrative Play Area Fence Plan Detail:



3 Illustrative Turf Perimeter Detail:



Fence Specifications Overview:

- Height: 8'
- Picket Style: 7/8"x6"
- Tongue & Groove .065"
- Color: Gray/White

Dogtopia outdoor areas use best-in-class industry cleaning standards to reduce odor

TURF CLEANING *outside*

Spot Clean Turf

1. Pick up solid waste using poop bag and tie bag securely then place in trash bin
2. Spot clean the area using a water hose, careful to not create areas of pooling
3. Spray the area with Banner using a trigger spray bottle



Closing Outside

1. Make sure the turf is clean from any solid waste
2. Use a turf rake to collect any debris
3. Rinse the turf with water, then spray the potty areas with Banner using the hose end spray nozzle
4. Do not use Maxim Disinfectant on turf
5. Use outside turf cleaning machine with Banner



Dogtopia outdoor areas use best-in-class industry cleaning standards to reduce odor

TURF CLEANING *outside*

Spot Clean Turf

1. Pick up solid waste using poop bag and tie bag securely then place in trash bin
2. Spot clean the area using a water hose, careful to not create areas of pooling
3. Spray the area with Banner using a trigger spray bottle



Closing Outside

1. Make sure the turf is clean from any solid waste
2. Use a turf rake to collect any debris
3. Rinse the turf with water, then spray the potty areas with Banner using the hose end spray nozzle
4. Do not use Maxim Disinfectant on turf
5. Use outside turf cleaning machine with Banner



Dogtopia outdoor areas use proposal and protocols

Proposed General Outdoor Dog Use:

- Dogs permitted outside in the outdoor run only
- No dogs will never be walked by Dogtopia staff on the exterior of the building premises

Outdoor Dog Play Groups:

- Dogs allowed outside during the permitted days and times in maximum play groups of 10 dogs at a time

Outdoor Dog Use Days & Times:

- Dogs permitted to use the outdoor run only Monday – Friday and not on Saturday or Sunday
- During permitted days, dogs allowed outside between 9:00am and 11:30am and from 2:00pm and 4:30pm

