

1. STORM SEWER, SANITARY SEWER AND OTHER BURIED UTILITIES MAY HAVE BEEN PAINTED OR COVERED OVER. THE LOCATION OF UNDERGROUND UTILITIES AS SHOWN HEREON ARE BASED ON ABOVE GROUND STRUCTURES AND RECORD DRAWINGS PROVIDED TO THE SUPERVISOR. LOCATIONS OF UNDERGROUND UTILITIES MAY VARY FROM LOCATIONS SHOWN HEREON. ADDITIONAL BURIED UTILITIES MAY BE ENCOUNTERED. NO EXCAVATIONS WERE MADE DURING THE PROCESS OF THIS SURVEY TO LOCATE BURIED UTILITIES. BEFORE EXCAVATIONS ARE BEGUN, THE FOLLOWING OFFICES SHOULD BE CONTACTED FOR VERIFICATION OF UTILITY TYPE AND FOR FIELD LOCATIONS. EXERCISEMENTS AS SHOWN ARE APPROXIMATE AND TAKEN FROM RECORDED DOCUMENTS.

2. SURVEYOR HAS MADE NO INVESTIGATION OR INDEPENDENT SEARCH FOR EASEMENTS OF RECORD, ENCUMBRANCES, RESTRICTIVE COVENANTS, OWNERSHIP TITLE EVIDENCE, OR ANY OTHER FACTS THAT A CURRENT TITLE SEARCH MAY DISCLOSE.
3. THIS PLAT WAS PREPARED FOR THE EXCLUSIVE USE OF THE PERSON, PERSONS OR ENTITY NAMED HEREON. THIS PLAT DOES NOT EXTEND TO ANY UNNAMED PERSON, PERSONS, OR ENTITY WITHOUT THE EXPRESS REIFICATION OF THE SURVEYOR NAMING SUCH PERSON, PERSONS OR ENTITY.
4. THE FIELD DATA UPON WHICH THIS PLAT IS BASED HAS A CLOSURE PRECISION OF ONE FOOT IN 10,000+ FEET, AND AN ANGULAR ERROR OF 02" PER ANGLE POINT, AND WAS ADJUSTED USING COMPASS RULE. THIS PLAT HAS BEEN CALCULATED FOR CLOSURE AND IS FOUND TO BE ACCURATE WITHIN ONE FOOT IN 100,000+ FEET. LINEAR AND ANGULAR MEASUREMENTS WERE OBTAINED BY USING A TOPCON TOTAL STATION.
5. BEARINGS SHOWN WERE COMPUTED FROM ANGLES TURNED FROM A SINGLE MAGNETIC OBSERVATION.
6. THIS PROPERTY IS SUBJECT TO CURRENT ZONING REGULATIONS AND RESTRICTIONS.
7. THE FLOOD INFORMATION ON THIS PLAT HAS BEEN DETERMINED AFTER REVIEW OF MAPS WHICH ONLY APPROXIMATE THE LOCATION OF THE APPLICABLE FLOOD HAZARD AREA. A SECOND OPINION OR COMPREHENSIVE FLOOD EVALUATION STUDY IS SUGGESTED FOR MORE ACCURATE INFORMATION. FOR FURTHER INFORMATION CONTACT THE LOCAL DRAINAGE DEPARTMENT, CORPS OF ENGINEERS, AN INSURANCE COMPANY OR APPRAISER.
8. THIS PLAT NOT INTENDED FOR RECORDING.

1088 PARKVIEW PLACE
SMYRNA, GEORGIA

PARKVIEW VILLAGE

LAND LOT 488
DISTRICT 17TH. SECTION 2ND

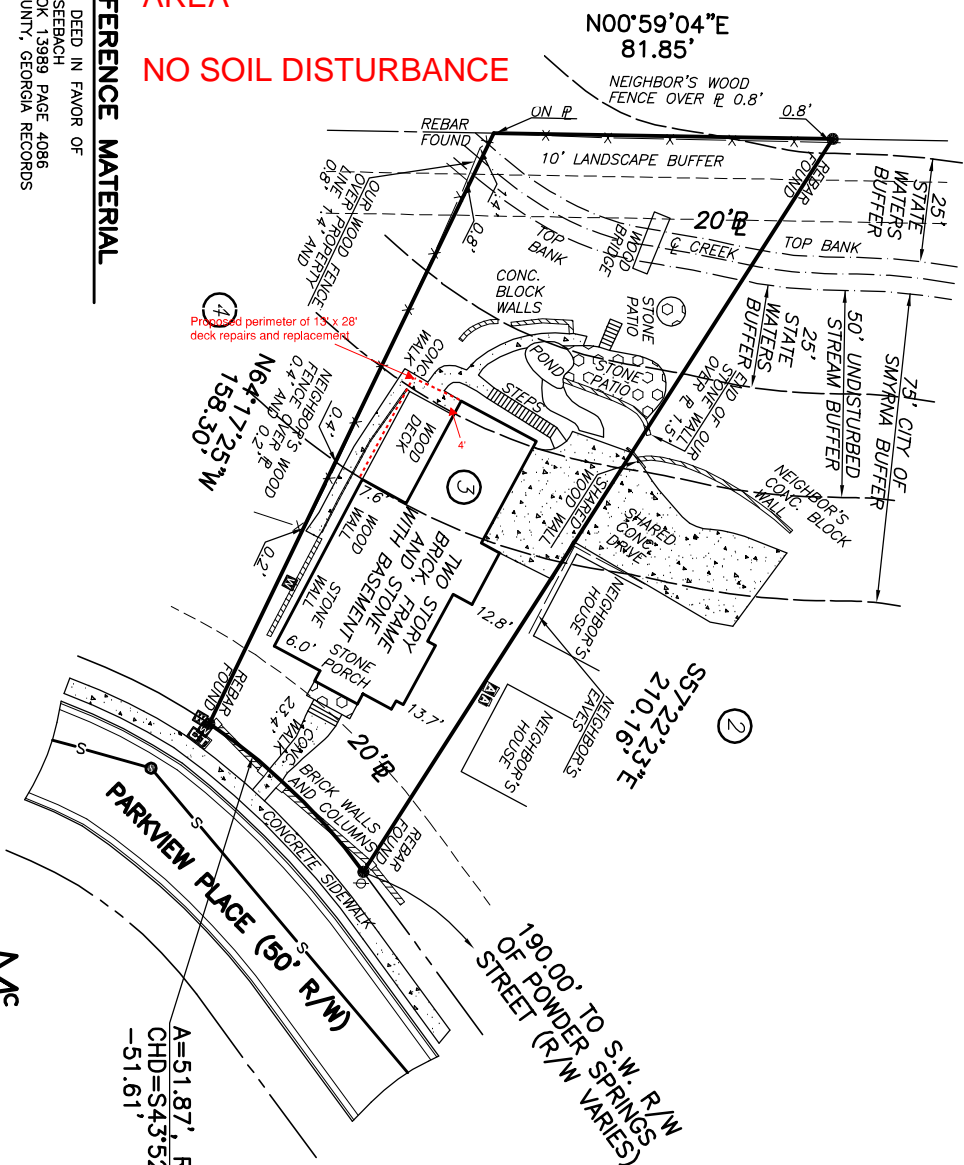
PLAT PREPARED: 4-16-13
FIELD: 4-11-13 SCALE: 1"=30'

PB	223
PG	31-34
DB	
PG	

This original of
this document was
seeded and signed by
Michael R. Noles
L.S. #2646
on 4-16-13. THIS
REPRODUCTION IS NOT
A CERTIFIED
DOCUMENT.

Georgia RLS #2646
Member SAMSOG
JOB#233582

McLUNG
SURVEYING SERVICES, INC.

$$\begin{array}{r} A=51.87', R=150.00' \\ \text{CHD}=S43^{\circ}52'52''W \\ -51.61' \end{array}$$


REFERENCE MATERIAL

1. WARRANTY DEED IN FAVOR OF
JOHN L. SEEBACH
DEED BOOK 13989 PAGE 4086
COBB COUNTY, GEORGIA RECORDS

LEGEND

- | | |
|-----|--------------------------|
| RCP | REINFORCED CONCRETE PIPE |
| CMP | CORRUGATED METAL PIPE |
| ⦿ | POWER POLE |
| ⦿ | LIGHT POLE |
| ⦿ | POWER METER |
| ⦿ | POWER BOX |
| ⦿ | AIR CONDITION |
| ⦿ | TELEPHONE BOX |
| ⦿ | GAS METER |
| ⦿ | GAS VALVE |
| ⦿ | WATER METER |
| ⦿ | WATER VALVE |
| ⦿ | JUNCTION BOX |
| ⦿ | DROP INLET |
| ⦿ | SANITARY SEWER MANHOLE |



**now what's below.
Call before you dig.**

A horizontal scale bar with alternating black and white segments. It is marked with '0'', '15'', and '30'' at the top. Below the bar, the text 'SCALE IN FEET' is written.

DB: DP	
No.	Revision

Revision

Date _____