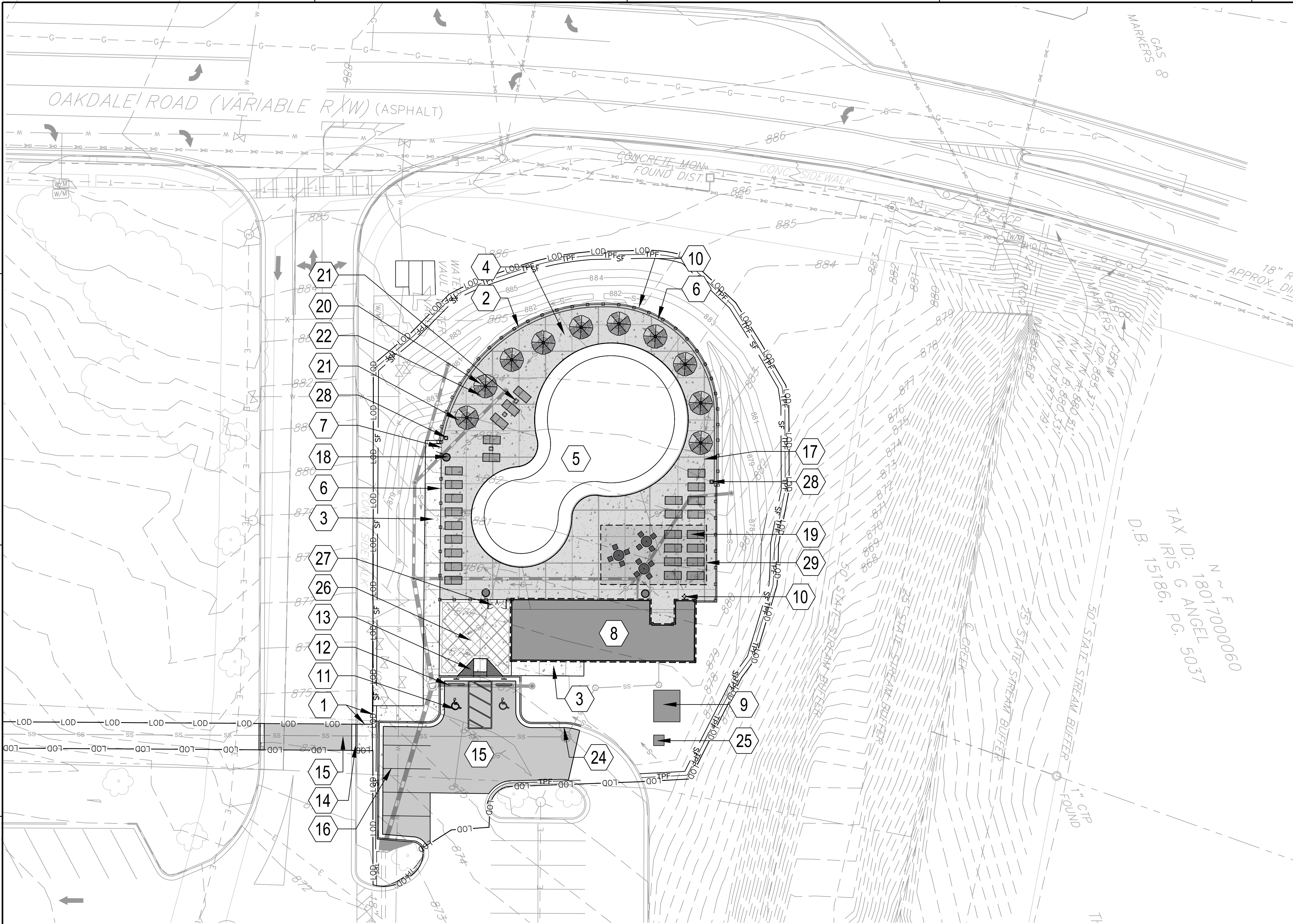


FILE PATH: I:\QP3SERVER\POND\CO.COM\RESOURCES\PROJECTS\FY21220789\04 CAD_BIM\04.02 CAD\CS101 PLOTTED BY: BISHOP, ALLISON DATE: 5/29/24



1 SITE PLAN
SCALE: 1" = 20'

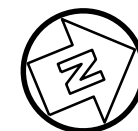
PAVING LEGEND

PEDESTRIAN CONCRETE WITH 10' X 10' SCORING PATTERN, SQUARED TO BUILDING;
4" GREY CONCRETE SLAB, KNOCKDOWN TEXTURE FINISH.
4" COMPACTED AGGREGATE BASE. REFER TO TYP. JOINT DETAIL FOR MORE INFORMATION RE: EXPANSION AND CONTROL JOINTS - SEE DETAIL 1/C-501

DEDUCTIVE ALTERNATE:
PEDESTRIAN CONCRETE WITH 3' X 3' SCORING PATTERN, 45° ANGLE;
4" GREY CONCRETE SLAB. REFER TO TYP. JOINT DETAIL FOR MORE INFORMATION RE: EXPANSION AND CONTROL JOINTS - SEE DETAIL 1/C-501

PEDESTRIAN CONCRETE:
4" GREY CONCRETE SLAB, LIGHT BROOM FINISH, 3000 PSI, 4" COMPACTED AGGREGATE BASE. REFER TO TYP. JOINT DETAIL FOR MORE INFORMATION RE: EXPANSION AND CONTROL JOINTS. - SEE DETAIL 1/C-501

ASPHALT PAVING
SEE DETAIL 4/C-501



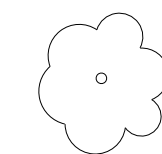
GENERAL SHEET NOTES

- THIS SHEET IS PART OF A MULTI-SHEET SET OF CONSTRUCTION PLANS AND SHALL BE READ WITH THE FULL SET TO BEST ENSURE PROPER INTERPRETATION.
- REFER TO SHEET C-001 FOR LEGENDS, ABBREVIATIONS, AND NOTES.
- CONTRACTOR SHALL HAVE ALL UTILITIES FIELD LOCATED PRIOR TO START OF CONSTRUCTION.
- CONSTRUCTION TO PROVIDE ALL NECESSARY BARRICADES AND SIGNAGE TO CLOSE SIDEWALK IN ACCORDANCE WITH THE CITY OF SMYRNA REGULATIONS AND REQUIREMENTS.
- SPLASHPAD AND ALL ASSOCIATED SURFACING AND EQUIPMENT TO BE INSTALLED BY A VORTEX CERTIFIED CONTRACTOR.
- SITE FURNISHING QUANTITY SHOWN ON PLAN IS REPRESENTATIVE ONLY. CONTRACTOR TO COORDINATE WITH OWNER AND DESIGNER ON EXACT NUMBERS DEPENDING ON BUDGET.

SHEET KEYNOTES

- CLEANLY TIE PROPOSED SIDEWALK INTO EXISTING SIDEWALK.
- DIAMOND PRO MODULAR BLOCK WALL, TYP. - SEE DETAIL 2/C-505
- PEDESTRIAN CONCRETE, TYP. - SEE DETAIL 1/C-501
- PEDESTRIAN CONCRETE, KNOCKDOWN TEXTURE, WITH 10X10 SCORING. - SEE DETAIL 1/C-501
- SPLASHPAD: EQUIPMENT AND SURFACING BY OTHERS - TO BE SUBMITTED UNDER SEPARATE PERMIT. FOR REFERENCE ONLY.
- AMERISTAR MAJESTIC ECHELON FENCE - SEE DETAIL 6/C-501
- REMOTE EMERGENCY EXIT: AMERISTAR MAJESTIC ECHELON SINGLE GATE - SEE DETAIL 5/C-501
- PROPOSED BUILDING TO BE SUBMITTED FOR PERMIT AT A LATER DATE.
- WATER RE-CIRCULATION SYSTEM AND VAULT BY OTHERS - TO BE SUBMITTED UNDER SEPARATE PERMIT. FOR REFERENCE ONLY.
- OUTDOOR SHOWER - SEE DETAIL 10/C-501
- ADA ACCESSIBLE PARKING STALL - SEE DETAIL 9/C-501
- CONCRETE WHEEL STOP - SEE DETAIL 8/C-501
- TYPE A WHEELCHAIR RAMP - SEE DETAIL 3/C-505
- CONCRETE CURB AND GUTTER - SEE DETAIL 3/C-502. CLEANLY TIE PROPOSED CURB AND GUTTER INTO EXISTING. INDICATE FIRE LANE WITH RED PAINT TO MATCH EXISTING.
- ASPHALT PAVING, TYP. CLEANLY SAWCUT AND REPLACE - SEE DETAIL 4/C-501
- 4" SOLID WHITE PAINTED PARKING STRIPING, TYP.
- TYP. CONCRETE JOINTS- SEE DETAIL 2/C-501
- BELSON ARCHTEC PARKVIEW TRASH RECEPTACLE - SEE DETAIL 11/C-501
- BELSON GROSFILLEX CALYPSO ADJUSTABLE SLING CHAISE LOUNGES, TYP.
- BELSON ESSENZA STACKING ARMCHAIRS, TYP.
- BELSON RESIN PATIO SIDE TABLE, TYP.
- BELSON WINDMASTER MARKET UMBRELLA WITH ALUMINUM POLE, TYP.
- BELSON Y-LEG PEDESTAL BASE AND MELAMINE TABLE TOP, TYP.
- CONCRETE CURB AND GUTTER - SEE DETAIL 3/C-502
- PROPOSED TRANSFORMER LOCATION. TRANSFORMER TO BE INSTALLED BY GEORGIA POWER.
- PEDESTRIAN CONCRETE WITH 3X3 DECORATIVE SCORING - SEE DETAIL 1/C-501
- DEDUCTIVE ALTERNATE: PEDESTRIAN CONCRETE (NO DECORATIVE SCORING).
- AMERISTAR MAJESTIC ECHELON DOUBLE GATE - SEE DETAIL 7/C-501
- MARIPOSA POST-TOP LIGHT FIXTURE - SEE ELECTRICAL PLAN
- SHADE STRUCTURE

LEGEND



EXISTING TREES TO REMAIN, TYP.

- LOD LIMITS OF DISTURBANCE, TYP.
- EXISTING TOPOGRAPHY, TYP.
- PROPOSED TOPOGRAPHY, TYP.
- TPF TREE PROTECTION FENCING



3500 Parkway Lane
Suite 500
Peachtree Corners
Georgia 30092
(678) 336-7740

Copyright © 2024 by Pond & Company. All rights reserved. No copying or duplication of these documents is allowed without the expressed written agreement of Pond & Company.

DPR SEAL

CLIENT INFORMATION



PROJECT NAME
**RIVER LINE
PARK SPLASH
PAD**

LAND LOT(S) 6091 OF
THE 18TH DISTRICT,
SECTION 170

6043 OAKDALE ROAD
SOUTHEAST
SMYRNA, GA

DRAWING ISSUE

12/13/2023
02/23/2024

PERMIT APPROVAL
PERMIT RESUBMITTAL/ IFC SET

A B

DESIGNED BY: ST/MF
DRAWN BY: AB/MH/JU
CHECKED BY: ST/MF
SUBMITTED BY: ST
DATE: 05/29/2024
PROJECT # 1220789

SHEET TITLE

SITE PLAN

SHEET NUMBER

CS101

ORIGINAL SHEET SIZE:
22" X 34"

ISSUED FOR CONSTRUCTION