



SMYRNA COMMUNITY
CENTER
F.F.E. 1051.39

SMYRNA COMMUNITY
CENTER
F.F.E. 1051.39

4A
CITY OF ATLANTA
(NO DEED FOUND)

KING STREET
PRIVATE VARIABLE R/W

PROPOSED BUILDING
FFE 1049.00

FFE
1049.0

ATLANTA ROAD
PUBLIC VARIABLE R/W

CITY OF SMYRNA NOTES

- ALL STRIPING IN THE RIGHT-OF-WAY MUST BE THERMOPLASTIC.
- CONTRACTOR SHALL BE RESPONSIBLE FOR REPAIRING ANY CURBING, SIDEWALKS, STREETS, AND ANY INFRASTRUCTURE IN THE PUBLIC RIGHT-OF-WAY DAMAGED DURING CONSTRUCTION.

NOTES

- USE ARCHITECTURAL PLANS FOR BUILDING STAKE OUT.
- ALL DIMENSIONS SHOWN ARE FROM FACE OF BUILDING, CURB, OR WALL UNLESS OTHERWISE NOTED.

CALL 811
FREE THROUGHOUT
THE U.S.A.
THREE WORKING DAYS
BEFORE YOU DIG.



SITE

LOCATION MAP
N.T.S.

PROJECT INFORMATION

SITE DATA

ZONING USE: CBD
TOTAL ACREAGE: 0.84
DISTURBED ACREAGE: 1.02
COBB COUNTY, GA
LAND LOT 521; 17TH DISTRICT
PARCEL #: 17052101220
SETBACKS:
FRONT: 12 ft.
SIDE: 0 ft.
BACK: 0 ft.

BUILDING DATA

BUILDING SQUARE FOOTAGE: 18,110 sq. ft.
BUILDING HEIGHT: 63 ft.

PARKING DATA

REQUIRED PARKING
RESTAURANTS: 1 SPACE(S) PER 75 sq. ft. OF GROSS FLOOR AREA.
TOTAL: (18,110 sq. ft.) / 75 sq. ft. = 222 SPACES
BICYCLE: 3 BIKE PARKING SPACES
PARKING PROVIDED:
0 TOTAL SPACES
0 HANDICAP SPACES
0 VAN/HIC SPACES
3 BIKE RACKS

UTILITY PROVIDERS

WATER: CITY OF SMYRNA UTILITY SERVICES
SEWER: CITY OF SMYRNA UTILITY SERVICES

PAVING LEGEND

	CONCRETE PAVING
	L.D. ASPHALT
	H.D. ASPHALT
	CONCRETE S/W
	MILL AND OVERLAY

OWNER/DEVELOPER (PRIMARY PERMITTEE)

STILLFIRE BREWERY
343 US-23
SUWANEE, GA 30024
(404) 863-7594
AARONB@STILLFIREBREWING.COM

ENGINEER

ANTONIO SAMPLE
EBERLY & ASSOCIATES, INC.
2951 FLOWERS ROAD SOUTH
SUITE 119
ATLANTA, GEORGIA 30341
(770) 452-7849
ASAMPLE@EBERLY.NET

24 HOUR CONTACT

AARON BISGES
770-547-8389
AARONB@STILLFIREBREWING.COM

PROJECT:
STILLFIRE BREWERY

LAND LOT 521
17TH DISTRICT
COBB COUNTY, GEORGIA
2700 ATLANTA RD SE, SMYRNA GA

REVISIONS:

08-12-2022	DD SET
02-09-2024	CD SET
03-05-2024	LDP RESUBMIT

LAYOUT &
STAKING PLAN

SCALE:	1" = 20'
DATE:	03/05/2024
DRAWN BY:	ANTONIO SAMPLE
PROJECT MANAGER:	ANTONIO SAMPLE
QA/QC CHECK:	XXXXXXXX

PROJECT NO.

21-100

SHEET NO.

C3.0

RELEASED FOR
CONSTRUCTION

OCCUPANCY SCHEDULE						
Level	Room Number	Room Information	Area	Type	Occupancy	Occupancy Load
LEVEL 01	101	SHAG SHOP	118 SF	M	30 SF	21
LEVEL 01	102	SEATING	225 SF	A2	15 SF	151
LEVEL 01	103-A	BAR	24 SF	B	15 SF	2
LEVEL 01	103	JAN	41 SF	BOH	150 SF	1
LEVEL 01	104	AV	83 SF	BOH	150 SF	1
LEVEL 01	105	STOR	216 SF	S-2	500 SF	1
LEVEL 01	107	OFFICE	96 SF	B	150 SF	1
LEVEL 01	121	OFFICE	154 SF	B	500 SF	1
LEVEL 01	122	BREWERY	4475 SF	F-2	500 SF	13
LEVEL 01	123	BOILER	188 SF	S-1	300 SF	1
LEVEL 01	124	MILL	117 SF	BOH	300 SF	1
LEVEL 01	125	ELEC	128 SF	BOH	300 SF	1
LEVEL 02	201	BAR/COFF	407 SF	A2	15 SF	26
LEVEL 02	202	JAN	46 SF	BOH	150 SF	1
LEVEL 02	203	STOR	178 SF	S-2	500 SF	1
LEVEL 02	204	OFFICE	128 SF	B	150 SF	1
LEVEL 02	205	STOR	127 SF	B	500 SF	1
LEVEL 02	206	ELEC	28 SF	BOH	150 SF	1
LEVEL 02						33
TOTAL OCCUPANT LOAD						228

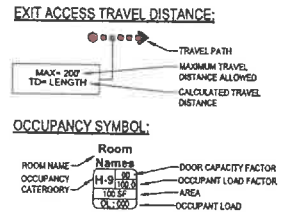
OCCUPANCY - EXTERIOR TERRACE						
Level	Room Number	Room Information	Area	Type	Occupancy	Occupancy Load
LEVEL 02	200	EXTERIOR SEATING	1370 SF	A2	15 SF	219
LEVEL 02	200-A	EXTERIOR BAR	298 SF	B	100 SF	3
LEVEL 02						221
TOTAL OCCUPANT LOAD						221

OCCUPANCY - RESTAURANT						
Level	Room Number	Room Information	Area	Type	Occupancy	Occupancy Load
LEVEL 01	100	PIZZA RESTAURANT	854 SF	B	15 SF	56
LEVEL 01						6
TOTAL OCCUPANT LOAD						6

GENERAL LS NOTES

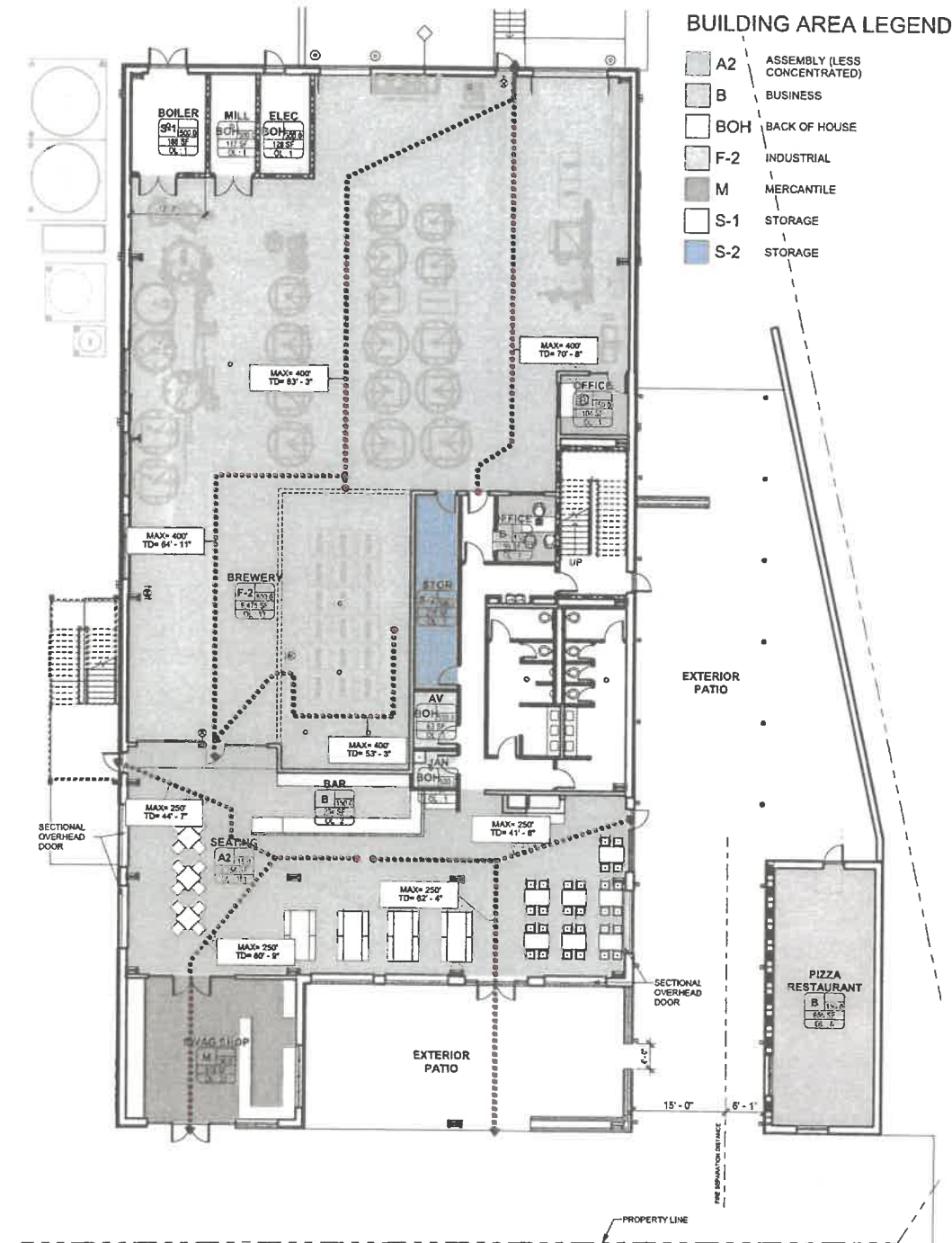
- ANY DOOR SHOWN IN RATED ASSEMBLIES SHALL ALSO BE RATED AS REQUIRED REFERENCE DOOR SCHEDULE.
- ANY EGRESS INDICATED ON THIS PLAN ARE FOR LIFE SAFETY REVIEW ONLY AND SHOULD NOT BE USED FOR CONSTRUCTION PURPOSES OR SIZES.
- ALL LIFE SAFETY DEVICES SHOWN ARE REQUIRED, BUT PRODUCT TYPES, DETAILS, MEANS, AND METHODS MUST BE FULLY COORDINATED BY THE CONTRACTOR.
- MINIMUM BACKTRACKS SHOWN FOR REFERENCE ONLY IN THESE DRAWINGS.
- REFER TO SERIES A100 FOR ACCESSIBLE ROUTES.
- DO NOT SCALE DIMENSIONS FROM DRAWINGS. ANY UNKNOWN DIMENSIONS SHALL BE OBTAINED FROM DESIGN PROFESSIONALS.
- ROOM AND DOOR NUMBERS ARE FOR CONSTRUCTION & DESIGN COORDINATION. FINAL ROOM NAMES AND NUMBERS SHALL BE CONFIRMED PRIOR TO FABRICATION OF SIGNAGE.
- FURNITURE SHOWN IS BY OTHERS AND IS FOR PLANNING PURPOSES ONLY.
- FIRE EXTINGUISHERS SHALL BE INSTALLED PER NFPA 16.

LS GRAPHICS LEGEND

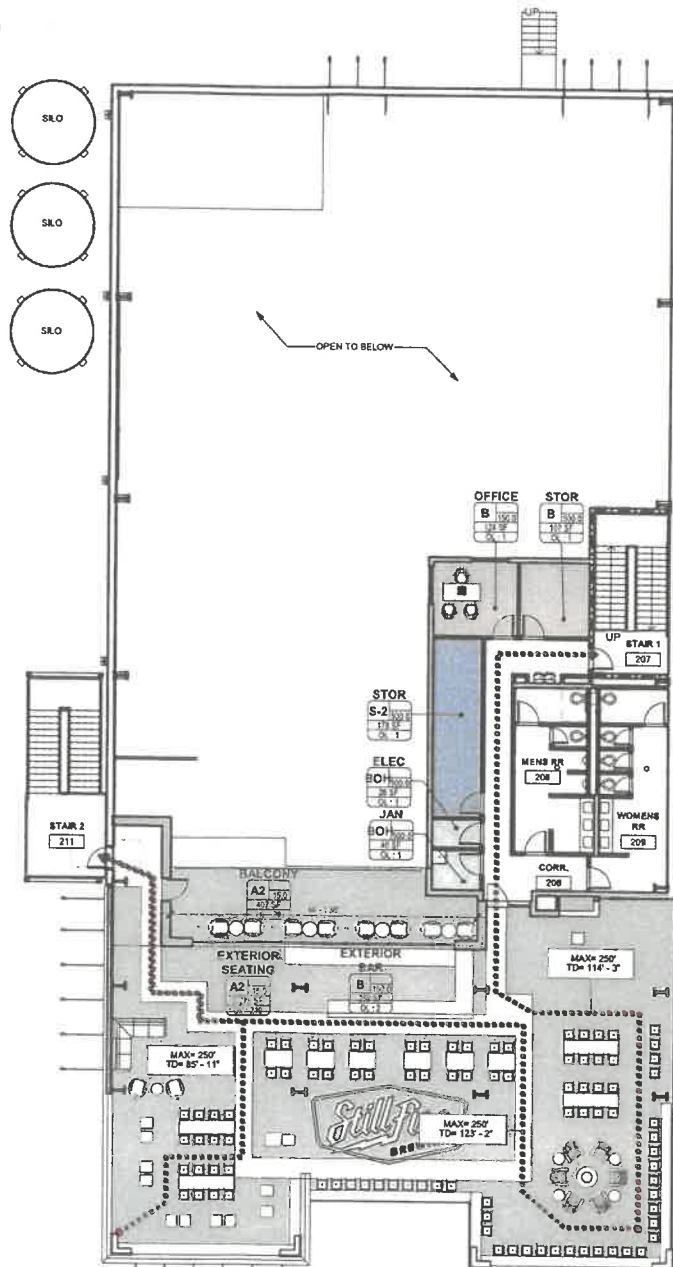


BUILDING AREA LEGEND

- A2 ASSEMBLY (LESS CONCENTRATED)
- B BUSINESS
- BOH BACK OF HOUSE
- F-2 INDUSTRIAL
- M MERCANTILE
- S-1 STORAGE
- S-2 STORAGE



1 LEVEL 1 - LIFE SAFETY PLAN



2 LEVEL 2 - LIFE SAFETY PLAN

SCALE: 1" = 10'-0"

BUILDING DATA - PIZZA RESTAURANT - COLD DARK SHEEL

OCCUPANCY CLASSIFICATION:
OCCUPANCY AS BUSINESS (NFPA CHPT. 3) GROUP B (IBC CHPT 6)

TYPE OF CONSTRUCTION (IBC):
TYPE VB, SPRINKLERED

HEIGHT AND AREA LIMITS (IBC):
ALLOWABLE HEIGHT PER TABLE 504.3: 60 FT
MAXIMUM NUMBER OF STORIES ABOVE GRADE PLANE PER TABLE 504.4:
* OCCUPANCY B = 3 STORIES
ALLOWABLE FLOOR AREA (IBC 506.2)
* OCCUPANCY B: 36,000 SF

BUILDING AREAS (IBC):
LEVEL 1 = 785 GSF

BUILDING OCCUPANCY LSC 7.3.1.2:
BUSINESS 150 sf / person
LEVEL 1 = 6 PERSONS

OCCUPANCY LOAD FACTOR (LSC Table 7.3.1.2):
BUSINESS 150 sf / person

FIRE-RESISTANCE RATING FOR EXTERIOR WALLS BASED ON FIRE SEPARATION DISTANCE (IBC Table 502):
FIRE SEPARATION DISTANCE = X (feet)
5<X<10 TYPE VB OCC. GROUP B FIRE RATING = 1

FIRE-RATING CRITERIA:
(IBC Table 601) FIRE RATING = 0

BREWERY BUILDING DATA

OCCUPANCY CLASSIFICATION:
MIXED OCCUPANCIES LSC 7.3.1.2
PRIMARY OCCUPANCY AS INDUSTRIAL LOW HAZARD (LSC CHPT. 6) GROUP F-2 (IBC CHPT. 3)
INCIDENTAL OCCUPANCY AS BUSINESS (NFPA CHPT. 3) GROUP B (IBC CHPT 6)
W/ ASSEMBLY (NFPA CHPT. 3) GROUP A-2 (IBC CHPT. 6)

STORAGE S-2 (IBC CHPT. 3) AS ANCIILLARY

TYPE OF CONSTRUCTION (IBC):
TYPE II-B, SPRINKLERED

HEIGHT AND AREA LIMITS (IBC):
ALLOWABLE HEIGHT PER TABLE 504.3: 75 FT
MAXIMUM NUMBER OF STORIES ABOVE GRADE PLANE PER TABLE 504.4:
* OCCUPANCY F2 = 4 STORIES
* OCCUPANCY A2 = 3 STORIES
* OCCUPANCY B = 4 STORIES
ALLOWABLE FLOOR AREA (IBC 506.2)
* OCCUPANCY F2: 69,000 SF
* OCCUPANCY B: 69,000 SF
* OCCUPANCY A2: 28,500 SF

BUILDING AREAS (IBC):
LEVEL 1 = 12,746 GSF
LEVEL 2 = 13,729 GSF
TOTAL = 26,475 GSF

BUILDING OCCUPANCY (NFPA):
LEVEL 1 = 233 PERSONS
LEVEL 2 = 253 PERSONS
TOTAL = 486 PERSONS

OCCUPANCY LOAD FACTOR (LSC Table 7.3.1.2):
INDUSTRIAL 100 sf / person
BUSINESS 150 sf / person
ASSEMBLY (Concentrated) 7 net sf / person
ASSEMBLY (Less concentrated) 15 net sf / person
MERCANTILE 30 sf / person
STORAGE 500 sf / person

FIRE RATING CRITERIA:
(IBC Table 601) FIRE RATING = 0

INTERIOR WALL AND CEILING FINISH REQUIREMENTS (IBC TABLE 803.5):
EXIT ENCLOSURES AND EXIT PASSAGEWAYS Class A or Class B
CORRIDORS Class A or Class B

OCCUPANCY SEPARATIONS (IBC TABLE 508.3.3):
A TO F-2 = 0 HRS
B TO F-2 = 6 HRS
A TO B = 1 HRS

FIRE-RESISTANCE RATING FOR EXTERIOR WALLS BASED ON FIRE SEPARATION DISTANCE (IBC Table 502):
FIRE SEPARATION DISTANCE = X (feet)
10<X<30 TYPE II-B OCC. GROUP A2 & B FIRE RATING = 0

APPLICABLE CODES

- | | |
|---|--|
| 2018 INTERNATIONAL BUILDING CODE WITH GEORGIA AMENDMENTS (2020, 2022, 2024) | 2015 INTERNATIONAL ENERGY CONSERVATION CODE WITH GEORGIA SUPPLEMENTS AND AMENDMENTS (2020, 2022, 2023) |
| 2018 INTERNATIONAL FIRE CODE WITH GEORGIA AMENDMENTS (2020, 2022) | 2018 NFPA 101, LIFE SAFETY CODE WITH GEORGIA AMENDMENTS (2020, 2022) |
| 2018 INTERNATIONAL PLUMBING CODE WITH GEORGIA AMENDMENTS (2020, 2022, 2023, 2024) | 2019 NFPA 72, NATIONAL FIRE ALARM & SIGNALING CODE WITH GEORGIA AMENDMENTS (2020, 2022) |
| 2018 INTERNATIONAL MECHANICAL CODE WITH GEORGIA AMENDMENTS (2020, 2024) | 2019 NFPA 13, STANDARD FOR THE INSTALLATION OF SPRINKLER SYSTEMS WITH GEORGIA AMENDMENTS (2020, 2022) |
| 2018 INTERNATIONAL FUEL GAS CODE WITH GEORGIA AMENDMENTS (2020, 2022) | 2010 ADA STANDARDS, PER RULES AND REGULATIONS OF THE SAFETY FIRE COMMISSIONER 120-3-20A |
| 2020 NATIONAL ELECTRICAL CODE WITH GEORGIA AMENDMENTS (2021) | |

LIFE SAFETY PLAN LEGEND

- SEPARATION PER IBC CHAPTER 7:**
--- 2-HOUR RATED PARTITION
--- 1-HOUR RATED PARTITION
--- SMOKE PARTITION
--- NON-RATED PARTITION
- EXTINGUISHER LOCATION PER NFPA 16:**
FEC FIRE EXTINGUISHER IN RECESSED CABINET
FE BRACKET MOUNTED FIRE EXTINGUISHER
- CAPACITY PER LSC 7.3.1.2:**
STAIRS = 0.37 PERSON
DOORS = 0.2 PERSON
32" W DOOR = 30" CLR = 150 CAPACITY
36" W DOOR = 34" CLR = 170 CAPACITY
42" W DOOR = 40" CLR = 200 CAPACITY
48" W DOOR = 46" CLR = 230 CAPACITY
60" W DOOR = 54" CLR = 320 CAPACITY
72" W DOOR = 66" CLR = 340 CAPACITY
96" W DOOR = 92" CLR = 460 CAPACITY
- DOORS PER IBC 715.4:**
- EXIT SIGNS PER IBC 1011:**
EXIT SIGNAGE (SHADING INDICATES FACE OF SIGN; ARROW SHOWN INDICATES DIRECTION)
- OCCUPANCY PER LSC 7.3.1.2 PER GEORGIA AMENDMENTS TO THE IBC:**
AREA SF / OCCUPANT LOAD FACTOR = OCCUPANCY COUNT (REFER TO PLANS FOR ROOM OCCUPANCY CALCULATIONS)
- ALLOWABLE DISTANCE PER LSC 12.7.6 & 40.2.5.1:**
TRAVEL DISTANCE LIMIT - MAX. 250 FT. SPRINKLERED
COMMON PATH LIMIT - MAX. 100 FT. SPRINKLERED
DEAD END LIMIT - MAX. 50 FT. SPRINKLERED
PATH OF EGRESS WITHIN BUILDING
TRAVEL DISTANCE & COMMON PATH (SEE NOTES ON PLANS)
- NUMBER OF EXITS PER IBC 1015 & LSC 7.4.1.2:**
ACTUAL EGRESS COUNT
EGRESS CAPACITY OF EXIT
- INDUSTRIAL USE = 100 GSF/PERSON**
BUSINESS AREAS = 150 GSF/PERSON
ASSEMBLY (CONCENTRATED) = 7 NET SF/PERSON
ASSEMBLY (UNCONCENTRATED) = 15 NET SF/PERSON
MERCANTILE = 30 GSF/PERSON
ACCESSORY STORAGE AREAS, MECHANICAL, ELECTRICAL ROOMS = 500 GSF/PERSON

PLUMBING FIXTURE REQUIREMENTS (IBC 2902.9.1)

OCCUPANCY	WATER CLOSETS	LAVATORIES	DRINKING FOUNTAINS	SERVICE SINK
ASSEMBLY	1 PER 40 (MALE) 1 PER 40 (FEMALE)	1 PER 75	1 PER 500	1
INDUSTRIAL	1 PER 100 (MALE) 1 PER 100 (FEMALE)	1 PER 100	1 PER 400	1

PLUMBING FIXTURE COUNT (TOTAL OCCUPANCY 498)

OCCUPANCY	WATER CLOSETS	LAVATORIES	DRINKING FOUNTAINS	SERVICE SINK
ASSEMBLY A-2 430 PERSONS	REQUIRED M F 6 6	REQUIRED M F 3 3	REQUIRED 1	REQUIRED 1
INDUSTRIAL F-1 19 PERSONS	REQUIRED M F 1 1	REQUIRED M F 1 1	REQUIRED 1	REQUIRED 1
TOTAL (ASSEMBLY + INDUSTRIAL)	REQUIRED M F M F 7 7 8 8	REQUIRED M F M F 5 5 5 5	REQUIRED 2	REQUIRED 2



208 Pirle Ferry Road, Suite C
Cumming, GA 30040

STILLFIRE BREWERY

MR. AARON BISGES & MR. JOHN BISGES

2750 ATLANTA RD
SMYRNA, GEORGIA 30080

PRINT RECORD

No.	DATE	DESCRIPTION
1-24-2024	SD	

Drawn By: Author
Checked By: Checker

Date: 05/11/2024
Job No.: 23033

Sheet Title: LIFE SAFETY - LEVEL 1

Sheet No.: 1

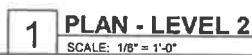
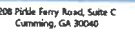
LS-1.01

NOT RELEASED FOR CONSTRUCTION



208 Pirle Ferry Road, Suite C
Cumming, GA 30040

NOT RELEASED FOR CONSTRUCTION

2750 ATLANTA RD
SMYRNA, GEORGIA 30080

Sheet Title
**DIMENSION PLAN -
LEVEL 2**

NOT RELEASED FOR CONSTRUCTION



208 Pk. Ferry Road, Suite C
Carmichael, CA 95608

STILLFIRE BREWERY

MR. AARON BISGES & MR. JOHN BISGES

2750 ATLANTA RD
SMYRNA, GEORGIA 30080

PRINT RECORD		
No.	DATE	DESCRIPTION
1	1-24-2024	SD

Drawn By
Author

Checked By
Checker

Date
06/11/2024

Job No.
23033

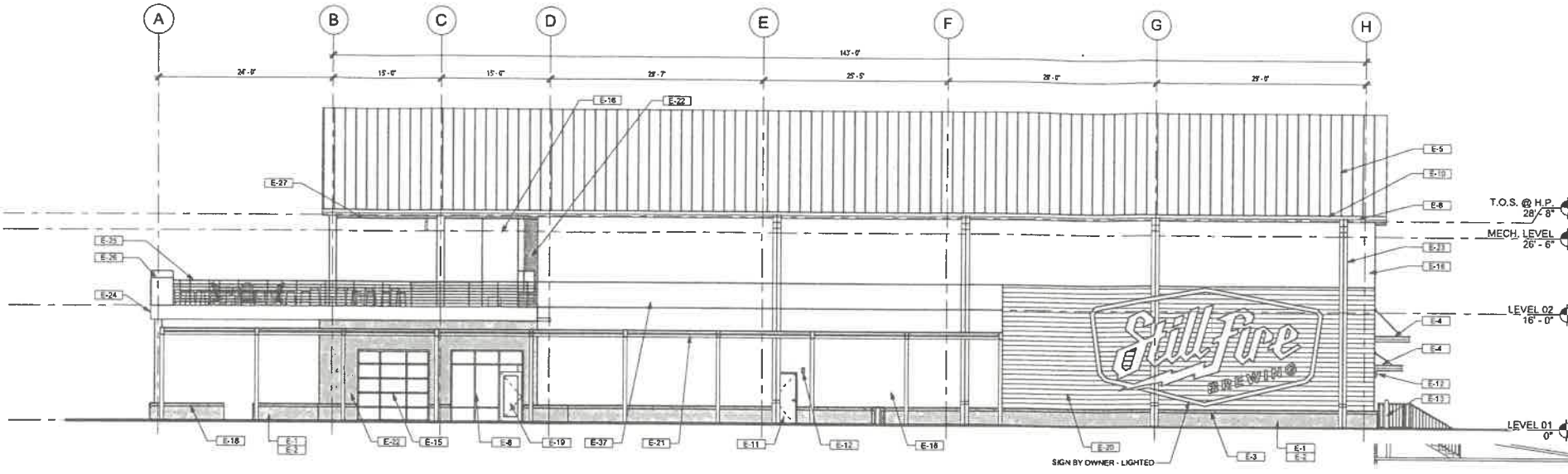
Sheet Title
EXTERIOR
ELEVATIONS

Sheet No.

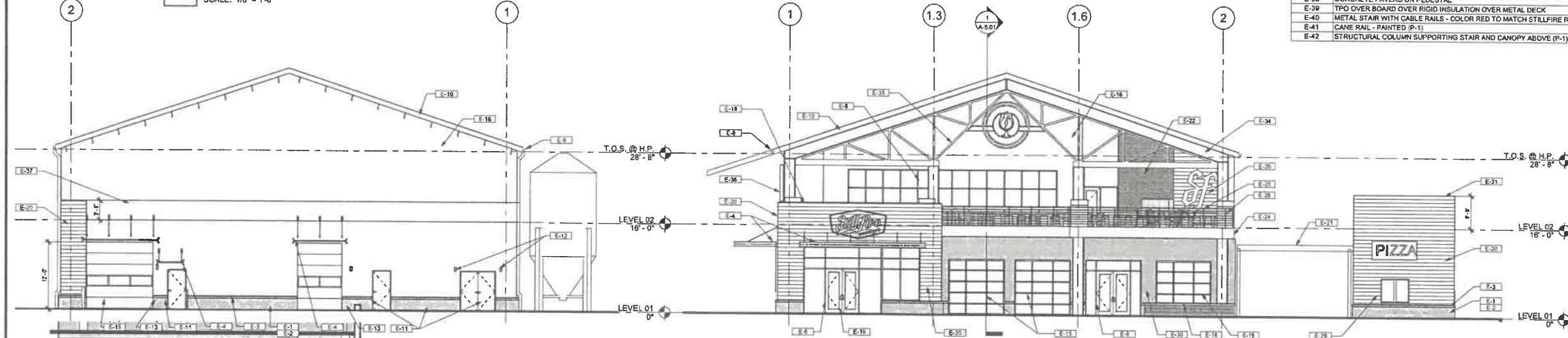
A-4.01

NOT RELEASED FOR CONSTRUCTION

KEY NOTES - ELEVATIONS	
KEY NOTE #	DESCRIPTION
E-1	LIGHT COLOR BRICK (B1) - BASE OF DESIGN: TAYLOR COLOR: #320 GRAY, TEXTURE: WIRECUT, SIZE: MODULAR
E-2	MORTAR
E-3	CAST STONE SILL, BASIS OF DESIGN: HAMBRICK CAST STONE, COLOR: INDIANA BUFF
E-4	PRE-FABRICATED CANOPY SYSTEM - FACTORY FINISHED, BASIS OF DESIGN: STANDARD HANGER CANOPY BY PEACHTREE PROTECTIVE COVERS.
E-5	REFINISHED METAL ROOF PANEL SYSTEM BY PEMB, COLOR: PAC-CLAD: MUSKET GRAY (MTL 1)
E-6	ALUMINUM STOREFRONT, BASIS OF DESIGN: TRIFAB 451T, COLOR: PAC-CLAD: DARK BRONZE (P-1), INSULATED GLASS UNIT - SOLARBAN 70 (2) OPTIGRAY + CLEAR GLASS
E-8	BOX GUTTER AND DOWNSPOUTS BY PEMB, COLOR: PAC-CLAD: DARK BRONZE
E-10	REFINISHED METAL FACIA BY PEMB, COLOR: PAC-CLAD: DARK BRONZE (P-1)
E-11	METAL DOOR AND FRAME, SEE DOOR SCHEDULE - COLOR TBD (P-2)
E-12	LIGHT FIXTURE, SEE ELECTRICAL DWGS.
E-13	6" DIA. BOLLARD - PAINTED
E-15	REFINISHED ROLL-UP SECTIONAL DOOR, SEE DOOR SCHEDULE. COLOR: COLOR: PAC-CLAD: DARK BRONZE (P-1)
E-16	REFINISHED METAL SIDING BY PEMB, BASIS OF DESIGN: VARCO PRUDEN, STYLE: VEE RIB WALL, COLOR: COLOR: PAC-CLAD: DARK BRONZE (P-1)
E-18	CAST STONE CAP, BASIS OF DESIGN: HAMBRICK CAST STONE, COLOR: INDIANA BUFF
E-19	ALUMINUM STOREFRONT GLASS DOOR - FRAME COLOR PAC-CLAD: DARK BRONZE (P-1)
E-20	NICHHA PANEL SYSTEM - STYLE: VINTAGEWOOD WOOD SERIES - COLOR SPRUCE (N-1)
E-21	LOUVERED STEEL TRELLIS STRUCTURE - PAINTED (P-1)
E-22	DARK COLOR BRICK WALL (B-2) - BASIS OF DESIGN: TAYLOR COLOR: DRIFTWOOD GRAY, TEXTURE: WIRECUT, SIZE: MODULAR
E-23	(2) 6" x 8" PREFINISHED ALUMINUM DOWNSPOUT BY PEMB, COLOR (P-1)
E-24	STEEL EDGE ANGLE - PAINTED COLOR (P-1)
E-25	CABLE RAIL WITH WOOD COUNTERTOP
E-26	FIRE PIT BOX
E-27	METAL PANEL SOFFIT ASSEMBLY - BASIS OF DESIGN MFR: CERTANTEED - STYLE: 8" WIDE, DECORATED WOOD LOOK - COLOR: TBD
E-29	ALUMINUM SLIDER WINDOW - COLOR (P-1)
E-30	ARCHITECTURAL CMU WALL ASSEMBLY
E-31	PREFINISHED ALUMINUM COPING - COLOR (P-1)
E-34	PEMB METAL FRAME - PAINTED (P-1)
E-35	STEEL TRUSS - PAINTED (P-1)
E-36	FRT WOOD SLATS SCREEN
E-37	METAL SIDING BY PEMB - BASIS OF DESIGN: VARCO PRUDEN, STYLE: VEE RIB WALL - COLOR: PAC-CLAD: MUSKET GRAY (MTL 2)
E-38	CONCRETE PAVERS ON PEDESTAL
E-39	TPO OVER BOARD OVER RIGID INSULATION OVER METAL DECK
E-40	METAL STAIR WITH CABLE RAILS - COLOR RED TO MATCH STILLFIRE RED (P-2)
E-41	CANE RAIL - PAINTED (P-1)
E-42	STRUCTURAL COLUMN SUPPORTING STAIR AND CANOPY ABOVE (P-1)

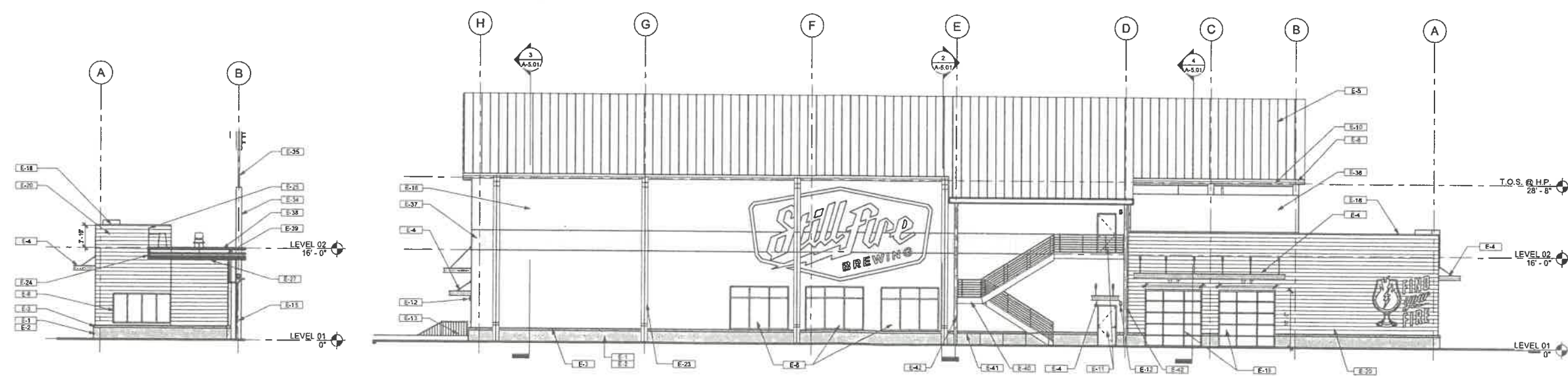


5 EAST ELEVATION
SCALE: 1/8" = 1'-0"



4 NORTH ELEVATION
SCALE: 1/8" = 1'-0"

3 SOUTH ELEVATION
SCALE: 1/8" = 1'-0"



2 EAST ELEVATION - TERRACE
SCALE: 1/8" = 1'-0"

1 WEST ELEVATION
SCALE: 1/8" = 1'-0"