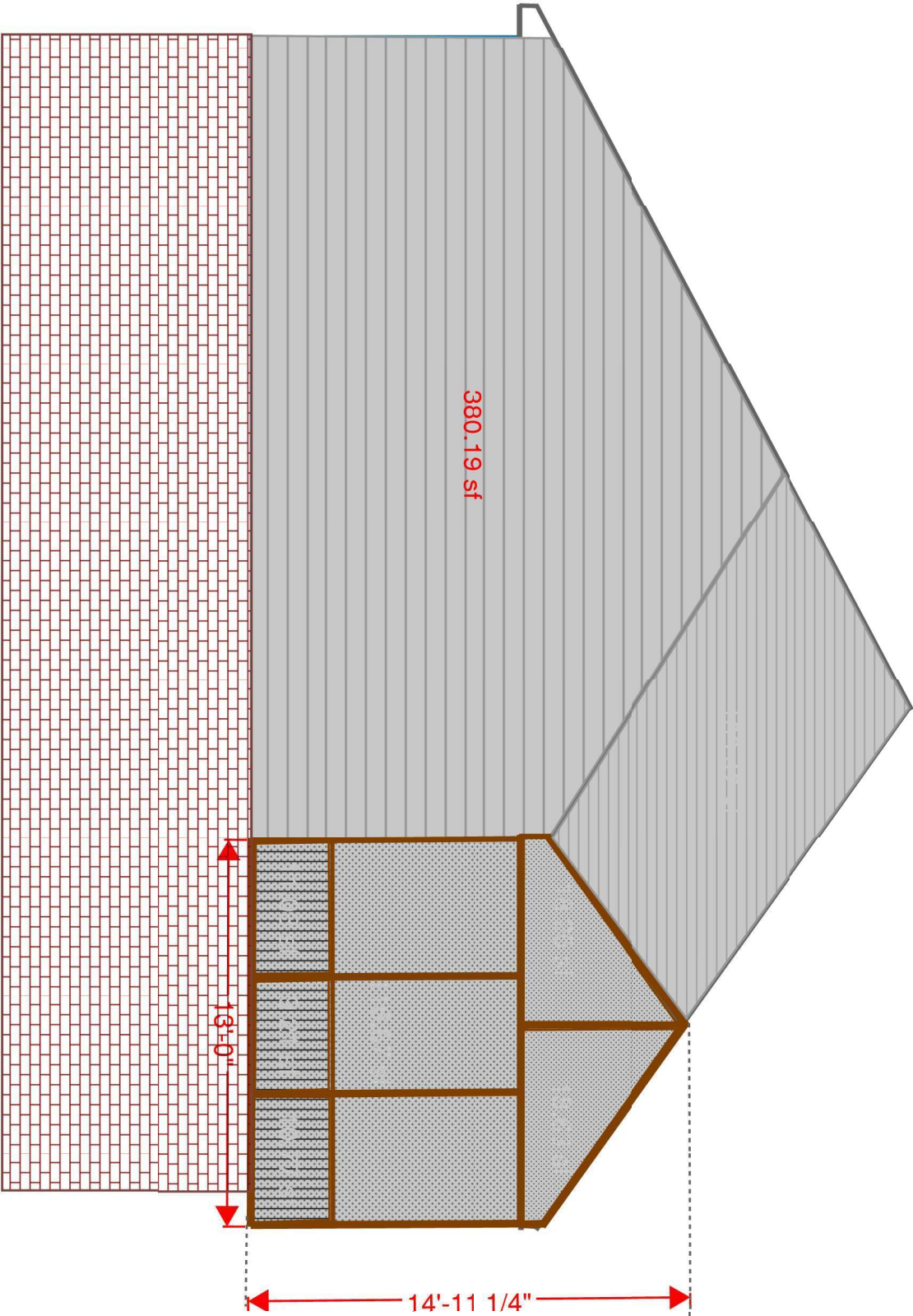


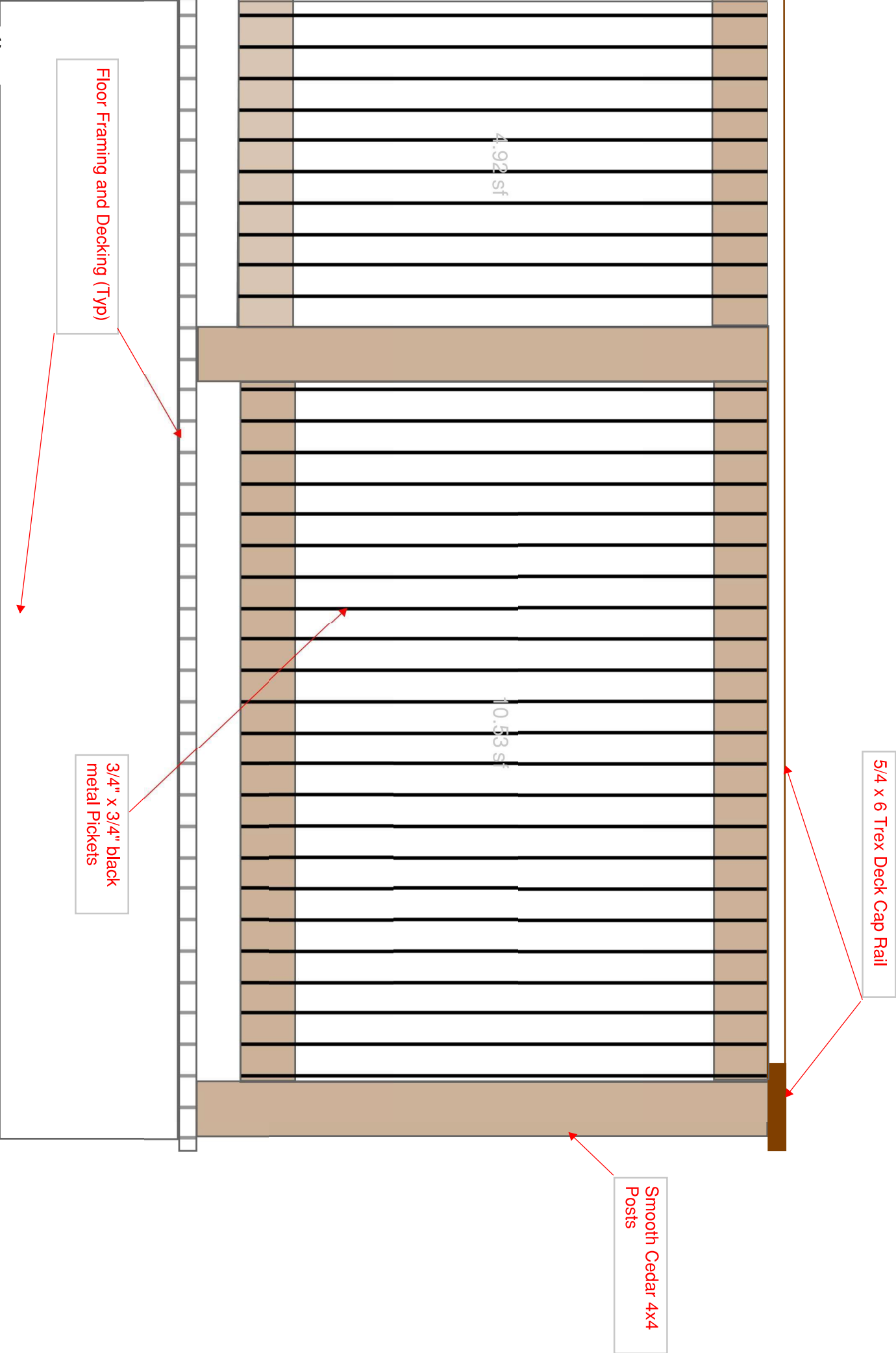
Floor Plan of Proposed Screen Porch and Deck

Scale 3/8" = 1'

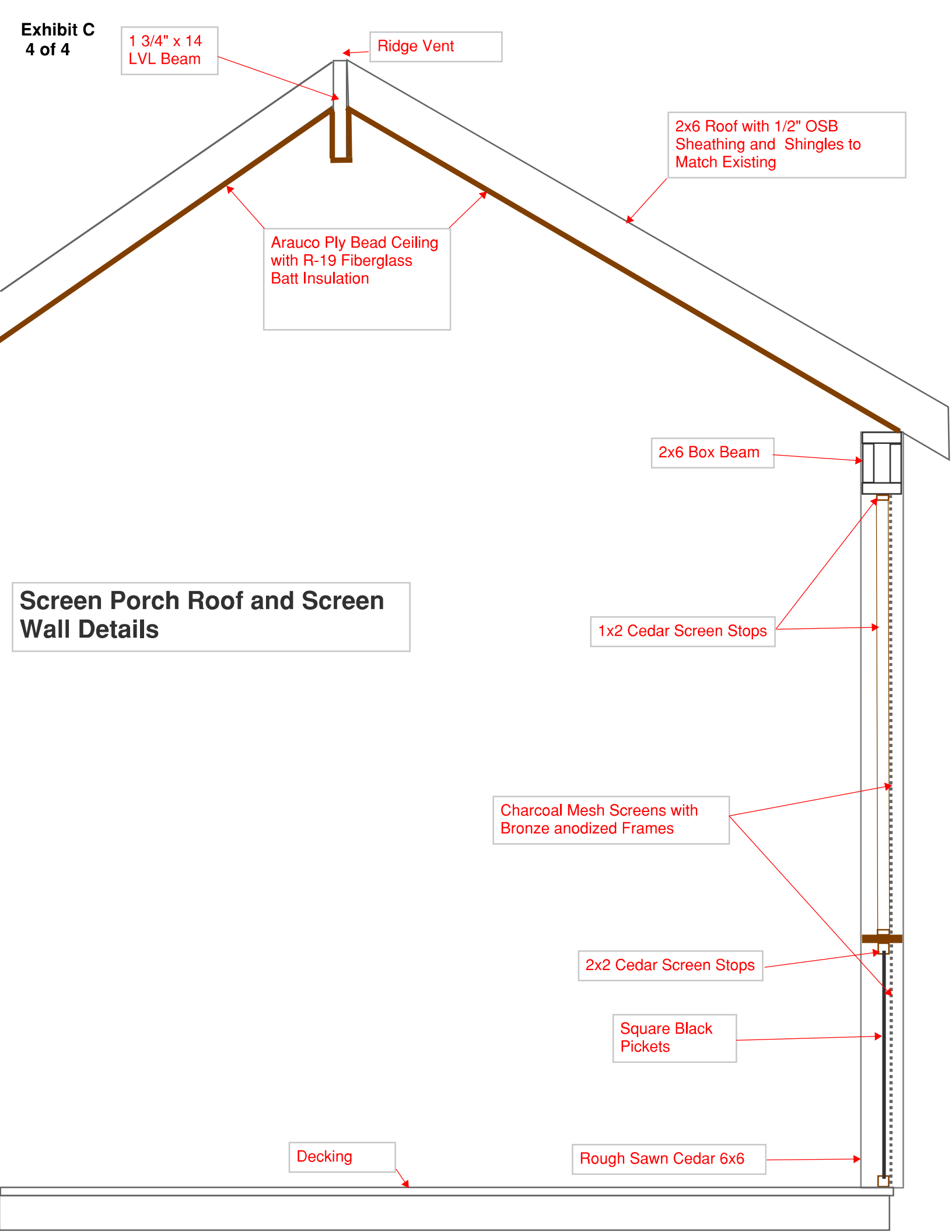


Rear Elevation with Proposed Screen Porch and Deck

Scale 3/16" = 1'



Deck Railing Detail (as viewed from outside)



Screen Porch Roof and Screen Wall Details

Reinforced Footings to be 30" x 36" x12", with 3 - #4 rebars embedded in each direction

Triple 2x12 Beams

Steel Structural Hangers Through Bolted with 1/2" Bolts

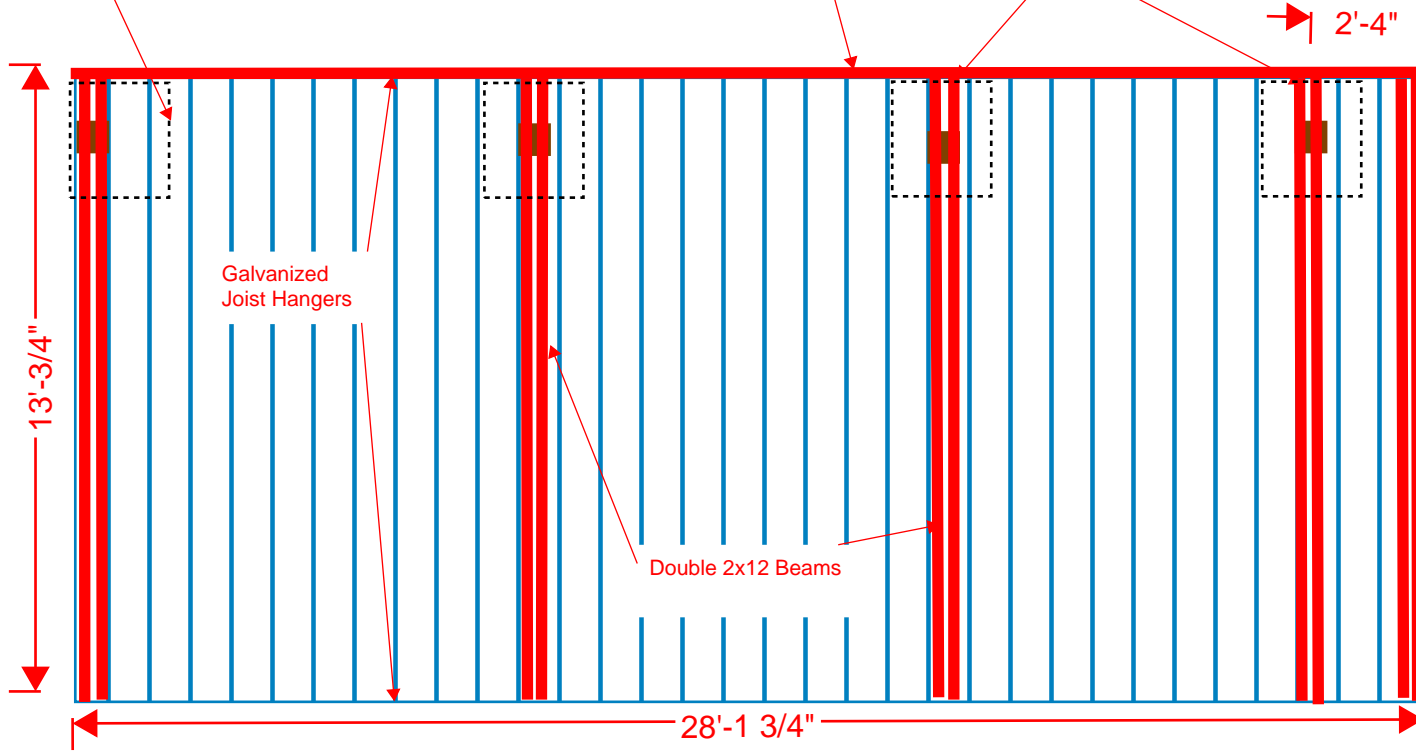
2'-4"

1'-2"

Load Points at Posts

Galvanized Joist Hangers

Double 2x12 Beams



Structural Framing Plan