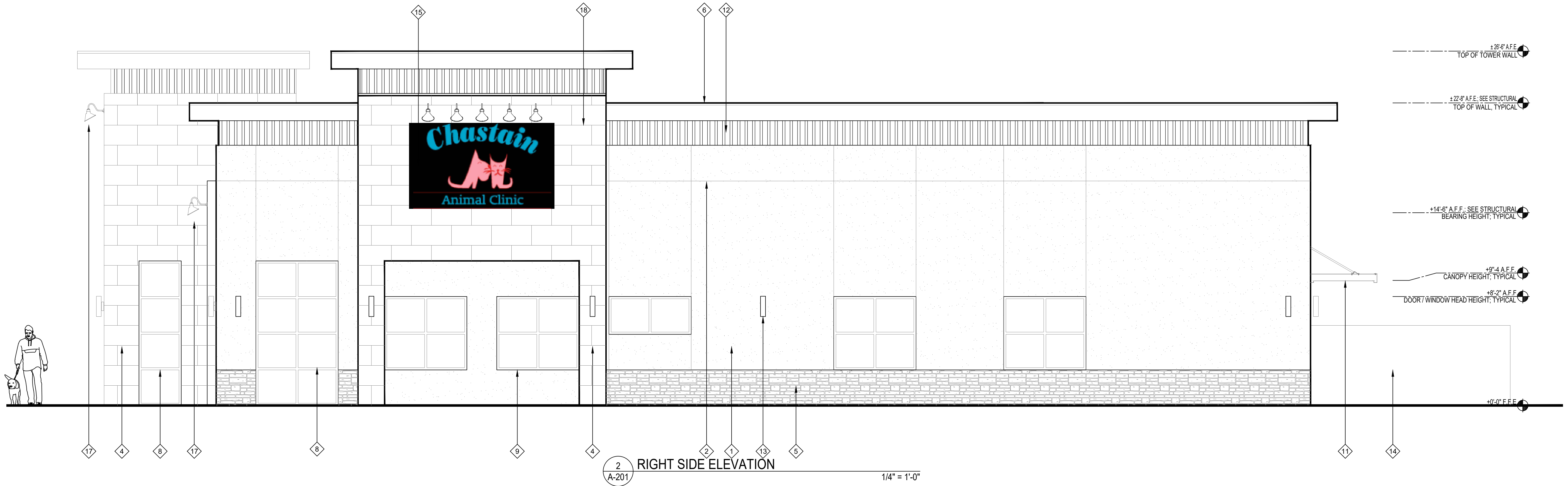


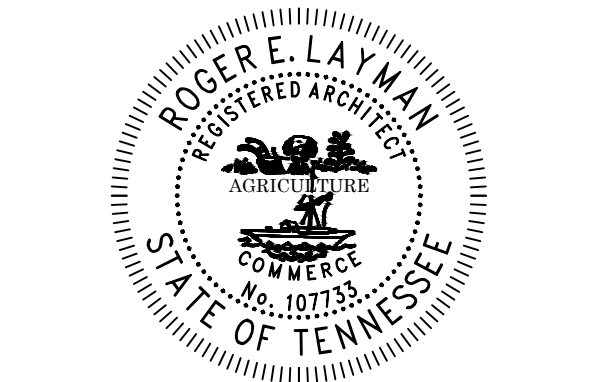
EXTERIOR MATERIALS SCHEDULE	
ITEM	INFORMATION
EIFS, DRYVIT SYSTEM	DRYVIT SYSTEMS; OUTSULATION® PLUS MD SYSTEM; COLOR: IRISH CREME (SW 7537)
CAST STONE	CULTURED STONE COUNTRY LEDGESTONE : WOLF CREEK
NICHHA PANEL WALL SYSTEM	VINTAGEWOOD-3030 PANEL SYSTEM; COLOR : REDWOOD
NICHHA PANEL WALL SYSTEM	MASONRY WALL PANEL - SANDSTONE - COLOR : DESERT BEIGE
STOREFRONT	DARK GRAY ALUMINUM WITH 1" INSULATED CLEAR GLASS
NOTE:	
1. THE ABOVE SCHEDULE OF EXTERIOR MATERIALS ARE USED IN THE NEW BUILDING. MATERIALS WILL BE COORDINATED WITH OWNER IN STYLE AND COLOR; U.N.O. ALL MANUFACTURERS LISTED TO SERVE AS A DESIGN BASIS. G.C. TO PROVIDE EQUAL PRODUCT AT A COST SAVINGS WHERE APPLICABLE.	
2. ANY SUBSTITUTIONS TO THE ABOVE SHALL BE SUBMITTED IN WRITING TO THE ARCHITECT AND APPROVED IN WRITING BY THE OWNER PRIOR TO ORDER OR INSTALLATIONS.	
3. ALL MATERIALS SHALL BE INSTALLED AND / OR APPLIED PER MANUFACTURER'S INSTRUCTIONS AND RECOMMENDATIONS.	
TAG	MATERIAL
1	EIFS DRAINABLE WALL SYSTEM; BASIS OF DESIGN DRYVIT SYSTEM, INC.
2	LINE OF 1/2" FRY REGLET REVEAL
3	LINE OF 1/2" FRY REGLET VERTICAL CONTROL JOINT; MAX 18'-0" O.C.
4	NICHHA VINTAGEWOOD-3030 PANEL SYSTEM, COLOR REDWOOD
5	CULTURED STONE - COLOR : WOLF CREEK
6	METAL COPING, COLOR : DARK GRAY
7	SLOPED ROOF BEYOND, SLOPED 1/4" PER FOOT; SEE ROOF PLAN FOR MORE INFORMATION
8	ALUMINUM STOREFRONT DOOR / WINDOW; SEE WINDOW SCHEDULE, SHEET A601 FOR MORE INFORMATION
9	ALUMINUM WINDOW; SEE WINDOW SCHEDULE, SHEET A601 FOR MORE INFORMATION
10	ROOF ACCESS LADDER W/ LOCKING CAGE; SEE DETAIL 13/A-501.2
11	CANOPY; BASIS OF DESIGN MAPES, SEE DETAIL 12/A501.2 COLOR DARK GRAY
12	CORRUGATED METAL PANEL - GALVANIZED, EXPOSED FASTENER
13	UP/DOWN LIGHT MOUNTED @ CENTERLINE OF FIXTURE 7'-6" A.F.F.; SEE ELECTRICAL DRAWINGS
14	PRIVACY FENCE - NOT SHOWN FOR CLARITY
15	WALL MOUNTED EXTERIOR SIGNAGE
16	APPROXIMATE LOCATION OF ELECTRICAL METERS
17	LED GOOSENECK SIGN LIGHT - DARK GRAY / BLACK
18	NICHHA MASONRY SERIES SANDSTONE - COLOR : DESERT BEIGE
19	12" HIGH BUILDING NUMBERS - CENTURY GOTHIC - DARK GRAY / BLACK
20	
21	
22	
23	
24	
25	
26	



Chastain Animal Clinic  
NVA 216  
Smyrna GA



RLARCHITECTURE, pllc  
PO Box 161  
Davidson, NC 28036  
ph. 704.756.3540  
RLArchitecture.com



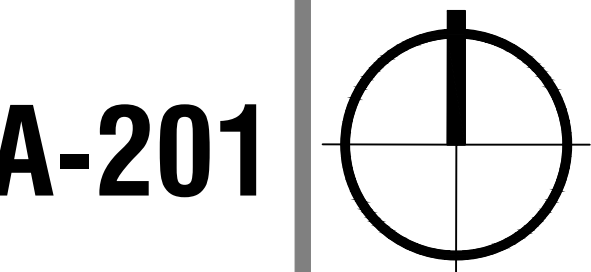
DRAWING TITLE:  
**EXTERIOR ELEVATIONS**

THIS DRAWING IS THE PROPERTY OF  
RLArchitecture, pllc AND IS NOT TO BE  
COPIED OR REPRODUCED IN PART  
OR  
WHOLE WITHOUT THE EXPRESSED  
WRITTEN PERMISSION OF  
RLArchitecture, pllc.

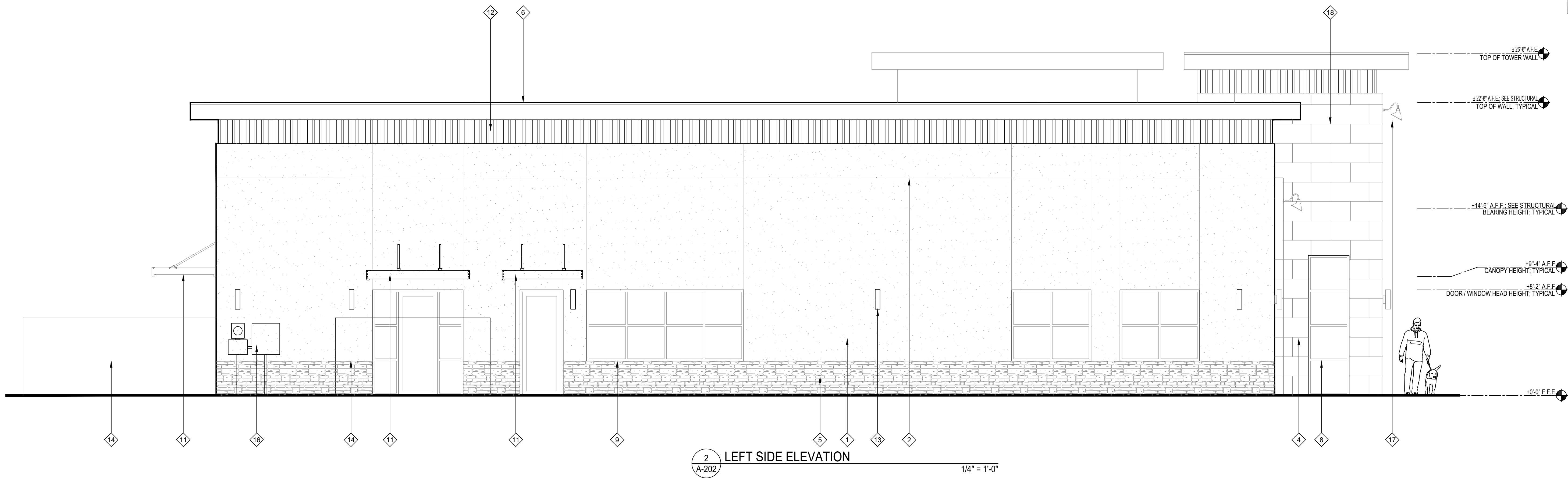
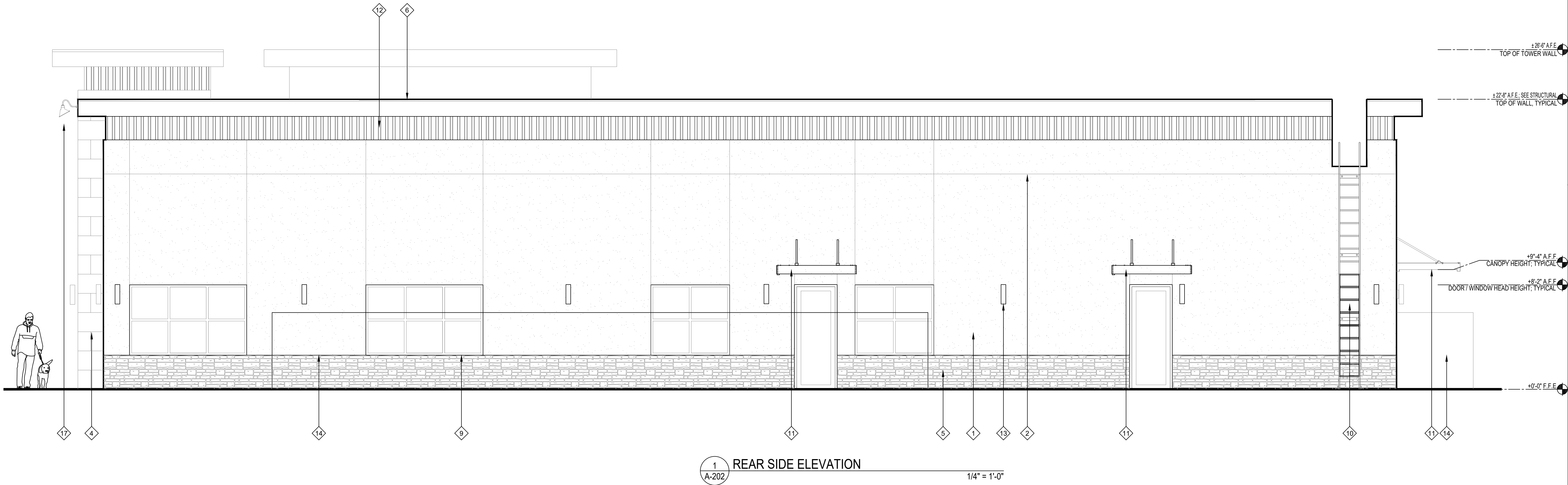
**NOT FOR CONSTRUCTION**

REVISIONS		
NO.	DATE	DESCRIPTION

DATE: 12.5.2023  
PROJECT #: 2023.77  
SCALE: AS NOTED  
DRAWN BY: RL







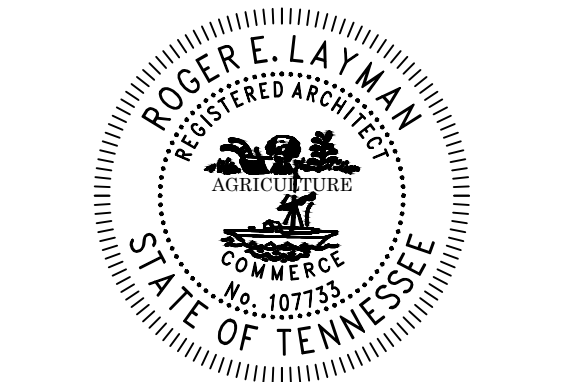
EXTERIOR MATERIALS SCHEDULE	
ITEM	INFORMATION
EIFS, DRYVIT SYSTEM	DRYVIT SYSTEMS; OUTSULATION® PLUS MD SYSTEM; COLOR: IRISH CREME (SW 7537)
CAST STONE	CULTURED STONE COUNTRY LEDGESTONE : WOLF CREEK
NICHIHA PANEL WALL SYSTEM	VINTAGEWOOD-3030 PANEL SYSTEM; COLOR : REDWOOD
NICHIHA PANEL WALL SYSTEM	MASONRY WALL PANEL - SANDSTONE - COLOR : DESERT BEIGE
STOREFRONT	DARK GRAY ALUMINUM WITH 1" INSULATED CLEAR GLASS
NOTE:	
1. THE ABOVE SCHEDULE OF EXTERIOR MATERIALS ARE USED IN THE NEW BUILDING. MATERIALS WILL BE COORDINATED WITH OWNER IN STYLE AND COLOR. U.N.O. ALL MANUFACTURERS LISTED TO SERVE AS A DESIGN BASIS. G.C. TO PROVIDE EQUAL PRODUCT AT A COST SAVINGS WHERE APPLICABLE.	
2. ANY SUBSTITUTIONS TO THE ABOVE SHALL BE SUBMITTED IN WRITING TO THE ARCHITECT AND APPROVED IN WRITING BY THE OWNER PRIOR TO ORDER OR INSTALLATIONS.	
3. ALL MATERIALS SHALL BE INSTALLED AND / OR APPLIED PER MANUFACTURER'S INSTRUCTIONS AND RECOMMENDATIONS.	
TAG	MATERIAL
1	EIFS DRAINABLE WALL SYSTEM; BASIS OF DESIGN DRYVIT SYSTEM, INC.
2	LINE OF 1/2" FRY REGLET REVEAL
3	LINE OF 1/2" FRY REGLET VERTICAL CONTROL JOINT; MAX 18'-0" O.C.
4	NICHIHA VINTAGEWOOD-3030 PANEL SYSTEM, COLOR REDWOOD
5	CULTURED STONE - COLOR : WOLF CREEK
6	METAL COPING, COLOR : DARK GRAY
7	SLOPED ROOF BEYOND, SLOPED 1/4" PER FOOT; SEE ROOF PLAN FOR MORE INFORMATION
8	ALUMINUM STOREFRONT DOOR / WINDOW; SEE WINDOW SCHEDULE, SHEET A601 FOR MORE INFORMATION
9	ALUMINUM WINDOW; SEE WINDOW SCHEDULE, SHEET A601 FOR MORE INFORMATION
10	ROOF ACCESS LADDER W/ LOCKING CAGE; SEE DETAIL 13/A-501.2
11	CANOPY; BASIS OF DESIGN MAPES, SEE DETAIL 12/A501.2 COLOR DARK GRAY
12	CORRUGATED METAL PANEL - GALVANIZED, EXPOSED FASTENER
13	UP/DOWN LIGHT MOUNTED @ CENTERLINE OF FIXTURE 7'-6" A.F.F.; SEE ELECTRICAL DRAWINGS
14	PRIVACY FENCE - NOT SHOWN FOR CLARITY
15	WALL MOUNTED EXTERIOR SIGNAGE
16	APPROXIMATE LOCATION OF ELECTRICAL METERS
17	LED GOOSENECK SIGN LIGHT - DARK GRAY / BLACK
18	NICHIHA MASONRY SERIES SANDSTONE - COLOR : DESERT BEIGE
19	12" HIGH BUILDING NUMBERS - CENTURY GOTHIC - DARK GRAY / BLACK
20	
21	
22	
23	
24	
25	
26	



Chastain Animal Clinic  
NVA 216  
Smyrna GA



RLARCHITECTURE, pllc  
PO Box 161  
Davidson, NC 28036  
ph. 704.756.3540  
RLArchitecture.com



DRAWING TITLE:  
**EXTERIOR ELEVATIONS**

THIS DRAWING IS THE PROPERTY OF RLArchitecture, pllc AND IS NOT TO BE COPIED OR REPRODUCED IN PART OR WHOLE WITHOUT THE EXPRESSED WRITTEN PERMISSION OF RLArchitecture, pllc.

**NOT FOR CONSTRUCTION**

REVISIONS		
NO.	DATE	DESCRIPTION

DATE| 12.6.2023  
PROJECT #| 2023.77  
SCALE| AS NOTED  
DRAWN BY| RL