

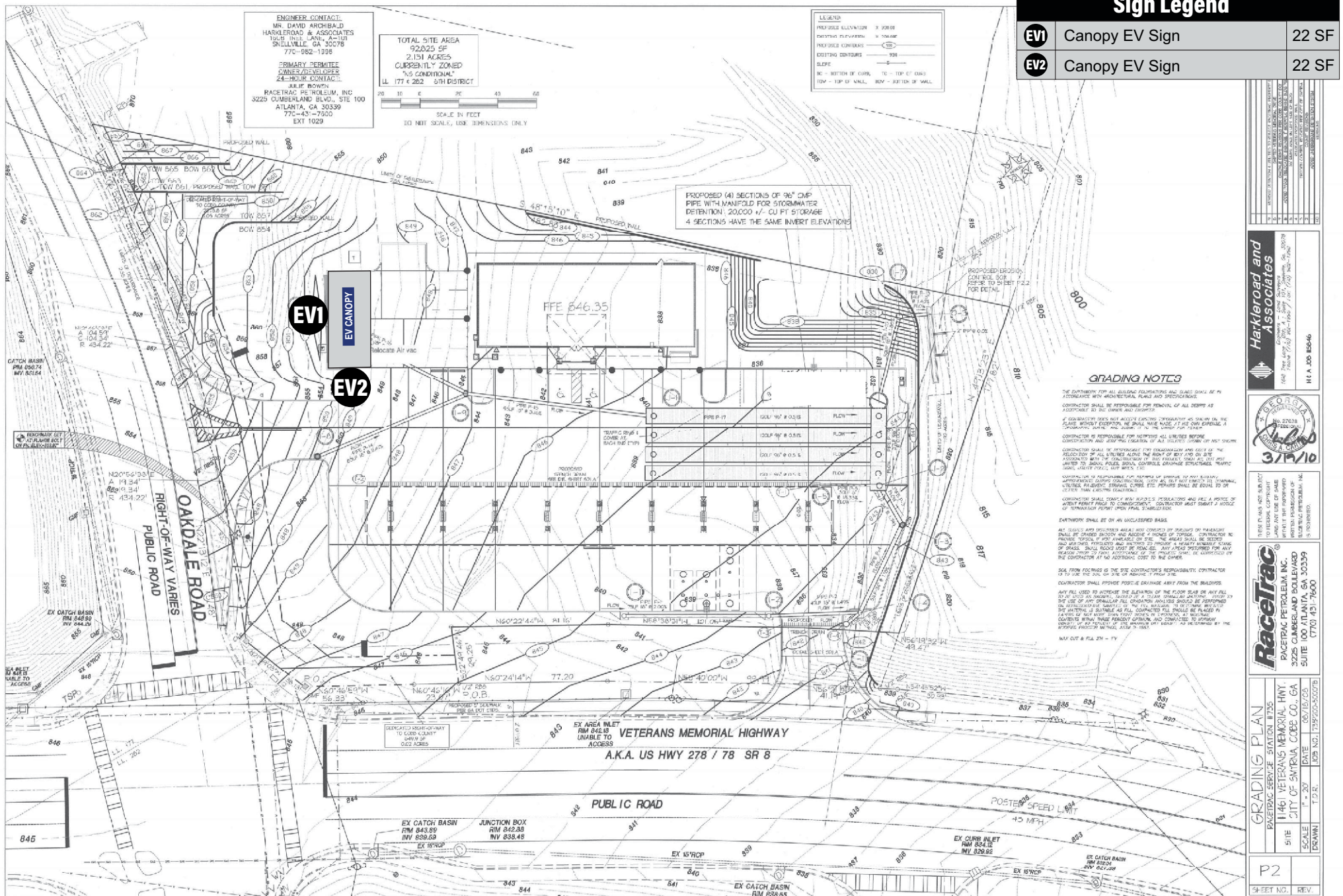


**RT140 Oakdale Road EV Canopy Addition
Signage Mini Book
1461 Veterans Memorial SE
Mableton, GA**

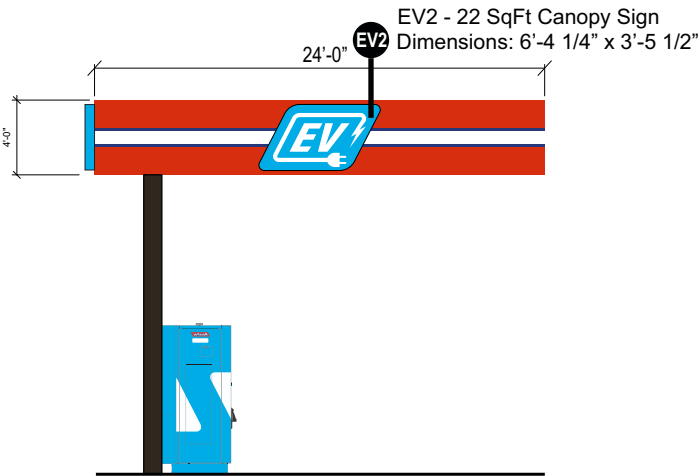
Revision #	Date	Page # and Details
1	00.00.00	Comments

	COLOR	SUPPLIER(S)	PART NUMBER(S)
C1	LOGO RED	AKZO NOBEL MATTHEWS	Akzo SIGN91780 Red* MP81489 R137186 LVS Semi-Gloss V1.1 Racetrac Red
C2	WHITE	AKZO NOBEL MATTHEWS	Akzo Sign 10553 White* MP83729 R143456 LVS Semi Gloss V1.1 White
C3	DARK BRONZE	AKZO NOBEL MATTHEWS	Dark Bronze 313E MP21286 R170760 Dark Bronze 313E
C5	RACETRAC BLUE	AKZO NOBEL MATTHEWS 3M	Akzo Code Sign3243 Blue* MP02136 R143265 LVS Semi-Gloss V1.1 Sultan Blue 7725-17 Vivid Blue Opaque Vinyl
C6	PRICER BLACK	3M	3630-22 Black Translucent Vinyl
C7	PRICER GREEN	3M	3630-156 Vivid Green Translucent Vinyl
C8	PRICER RED	3M	3630-143 Poppy Red Translucent Vinyl
C9	PRICER BLUE	3M	3630-127 Intense Blue Translucent Vinyl (Ethanol Free-DEF)
C11	FORT MYERS, FL AWNING ONLY	AKZO NOBEL MATTHEWS	PMS 1807C Color Match (see provided sample) PMS 1807C Color Match (see provided sample)
C15	NAPLES, FL AWNING ONLY	AKZO NOBEL MATTHEWS	SW 6444 Color Match (see provided sample) SW 6444 Color Match (see provided sample)
C18	ADDRESS WHITE	3M	7725-10 White Opaque Vinyl
C19	STANDARD AWNING RED	AKZO NOBEL MATTHEWS	CUSTOM COLOR MATCH-SAMPLE PROVIDED Mp15024 RED DRAGON LVS SEMI GLOSS V1.1
C20	STANDARD AWNING BLUE	AKZO NOBEL MATTHEWS	CUSTOM COLOR MATCH-SAMPLE PROVIDED Mp10259 LVS SEMI GLOSS V1.1
C21	EFC WGYG BLUE	MATTHEWS	Mp10147 IMPULSE SATIN FINISH
C22	EFC WGYG BEIGE	SHERWIN WILLIAMS	Sw9087 SMOKEY BEIGE
C24	EFC STANDARD COLOR	SHERWIN WILLIAMS	Sw7048 URBANE BRONZE

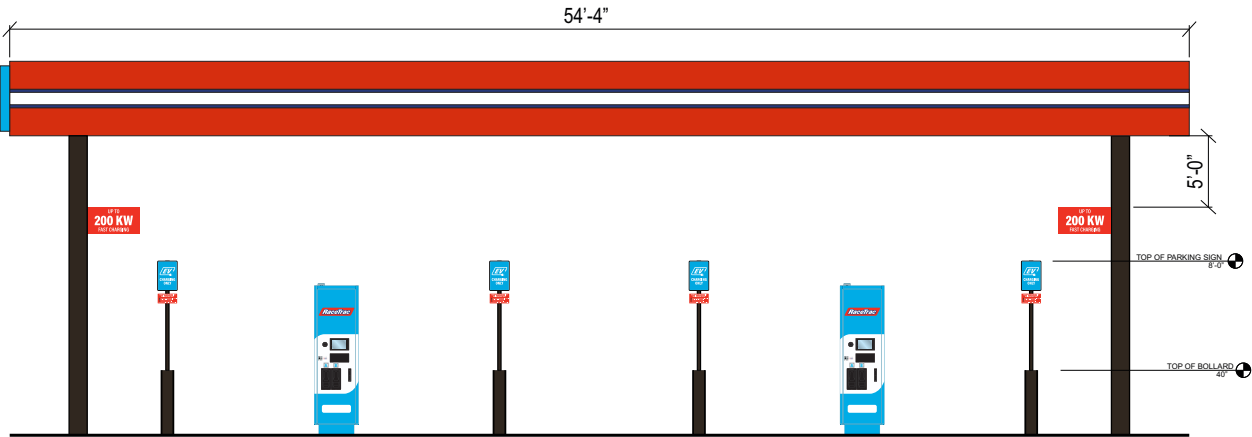
	RACETRAC PRINT-Provided by Miratec Systems
	S WIRLWORLD PRINT-Provided by Miratec Systems
	Flex Face Provided by Others; Install by Sign Vendor
	Provided by Others; Install by Sign Vendor
	3M 3630-43 Light Tomato Red Translucent Vinyl
	Provided by Others; Install by Sign Vendor
	3M 3630-015 Yellow Translucent Vinyl 3M 3630-22 Black Translucent Vinyl or Laminated Digital Print -Provided by Miratec Systems
	3M 3630-167 Bright Blue Translucent Vinyl or Laminated Digital Print -Provided by Miratec Systems
	3M 3630-337 Process Blue Translucent Vinyl or Laminated Digital Print -Provided by Miratec Systems
	



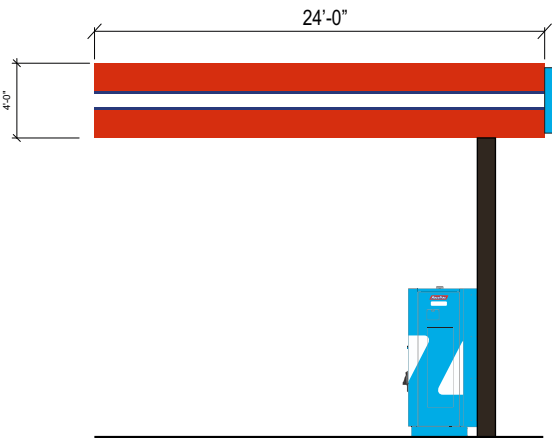
CANOPY FRONT	ITEM	SQ. FT.	LIN. FT.	CANOPY REAR	ITEM	SQ. FT.	LIN. FT.	ENTIRE CANOPY		SQ. FT.	LIN. FT.
					EV SIGN	22	6.33		EV SIGN	66	18.99
CANOPY SIDE											
	EV SIGN	22	6.33								



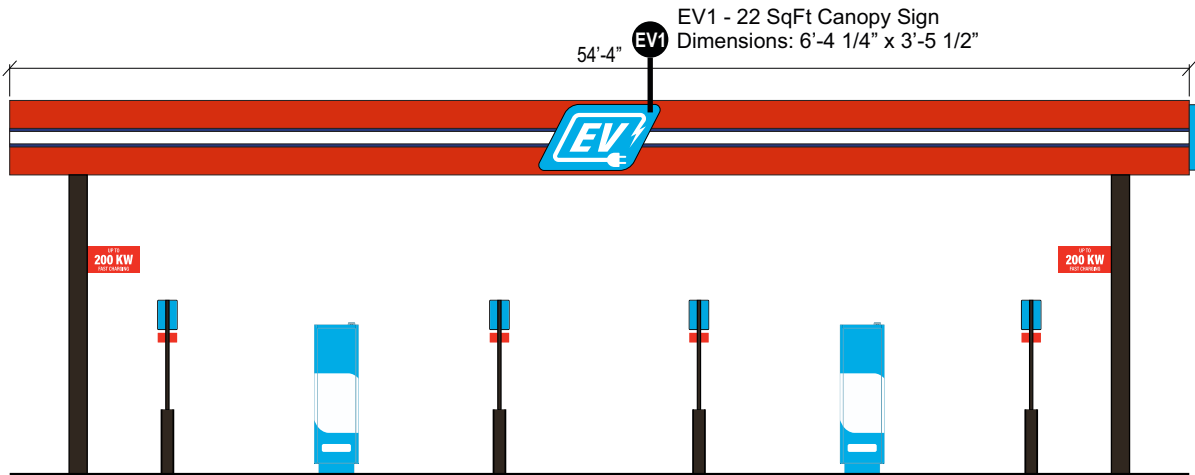
4 24' X 54'-4" CANTILEVERED (LEFT SIDE)
1/4" = 1'-0"



2 24' X 54'-4" CANTILEVERED (FRONT)
1/4" = 1'-0"



3 24' X 54'-4" CANTILEVERED (RIGHT SIDE)
1/4" = 1'-0"



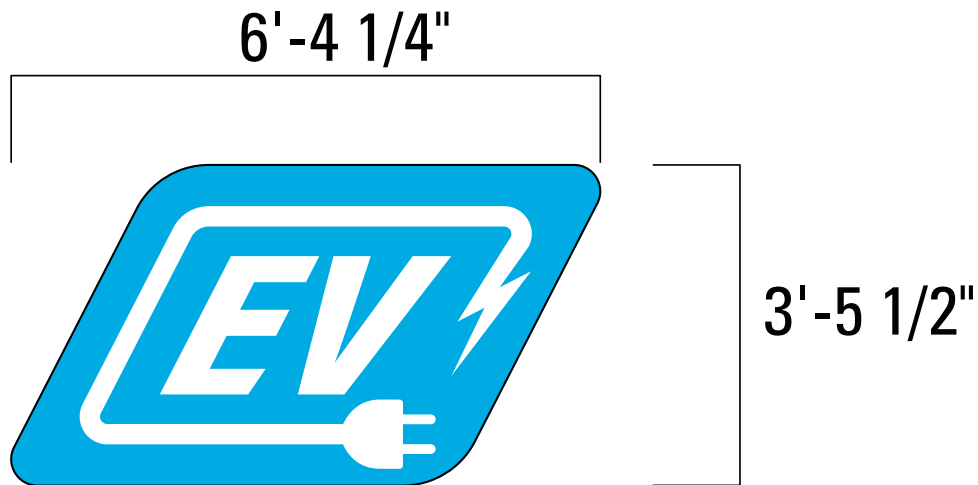
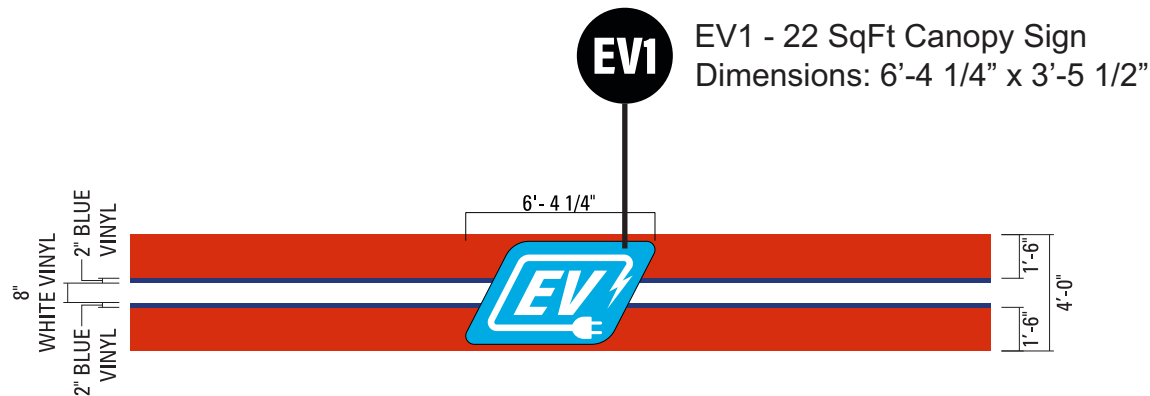
1 24' X 54'-4" CANTILEVERED (BACK SIDE)
1/4" = 1'-0"

ACM COLORS:
Program Red
Larson Program Red

See Color Schedule on Page 2



GENERAL NOTE: ALL WORK SHALL BE IN COMPLIANCE WITH RECOGNIZED INDUSTRY STANDARDS, MANUFACTURER'S RECOMMENDATIONS AND ALL APPLICABLE STATE AND LOCAL CODES, NO SUBSTITUTIONS ALLOWED.



See Color Schedule on Page 2

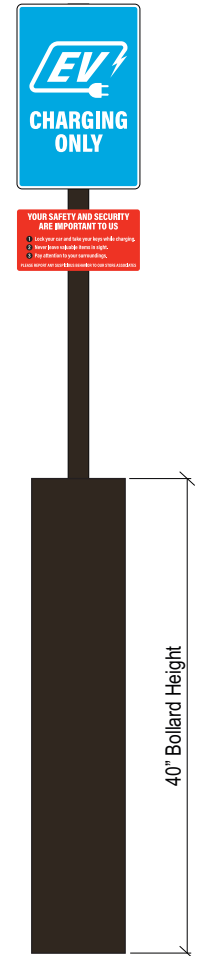
GENERAL NOTE: ALL WORK SHALL BE IN COMPLIANCE WITH RECOGNIZED INDUSTRY STANDARDS, MANUFACTURER'S RECOMMENDATIONS AND APPLICABLE STATE AND LOCAL CODES. NO SUBSTITUTIONS ALLOWED.

18" x 12" EV charging sign, 1/8" aluminum panel, painted blue.

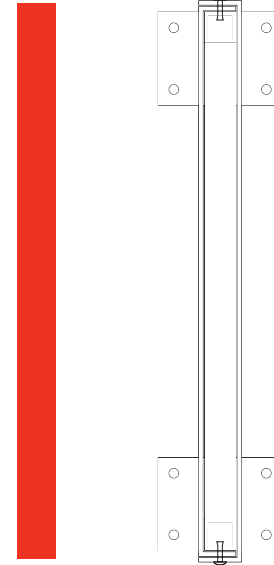
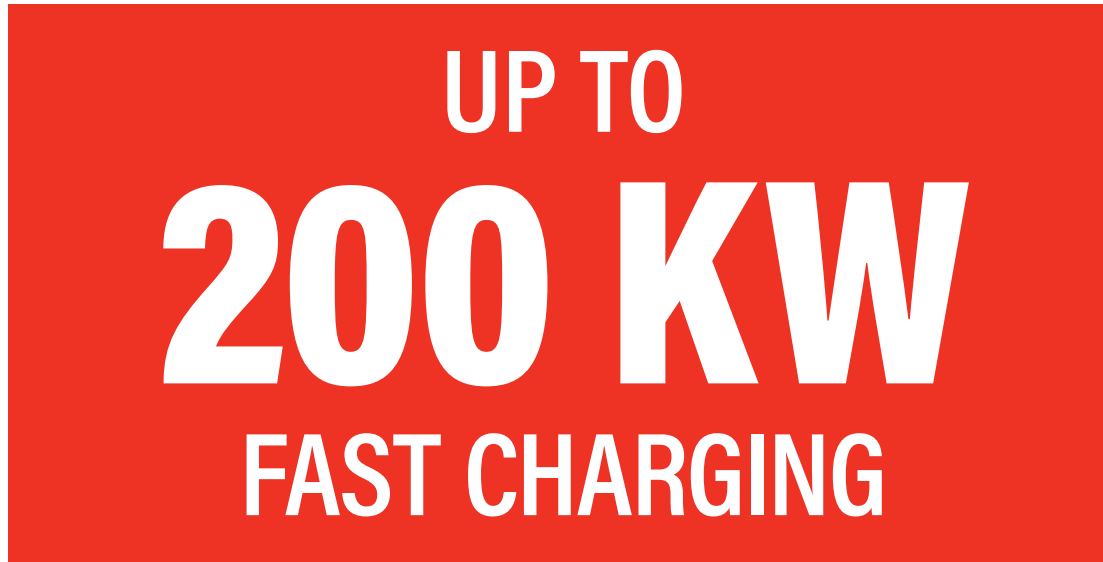
6" x 12" safety sign, 1/8" aluminum panel, painted red.

2" steel tube, .25" wall, painted RaceTrac bronze.

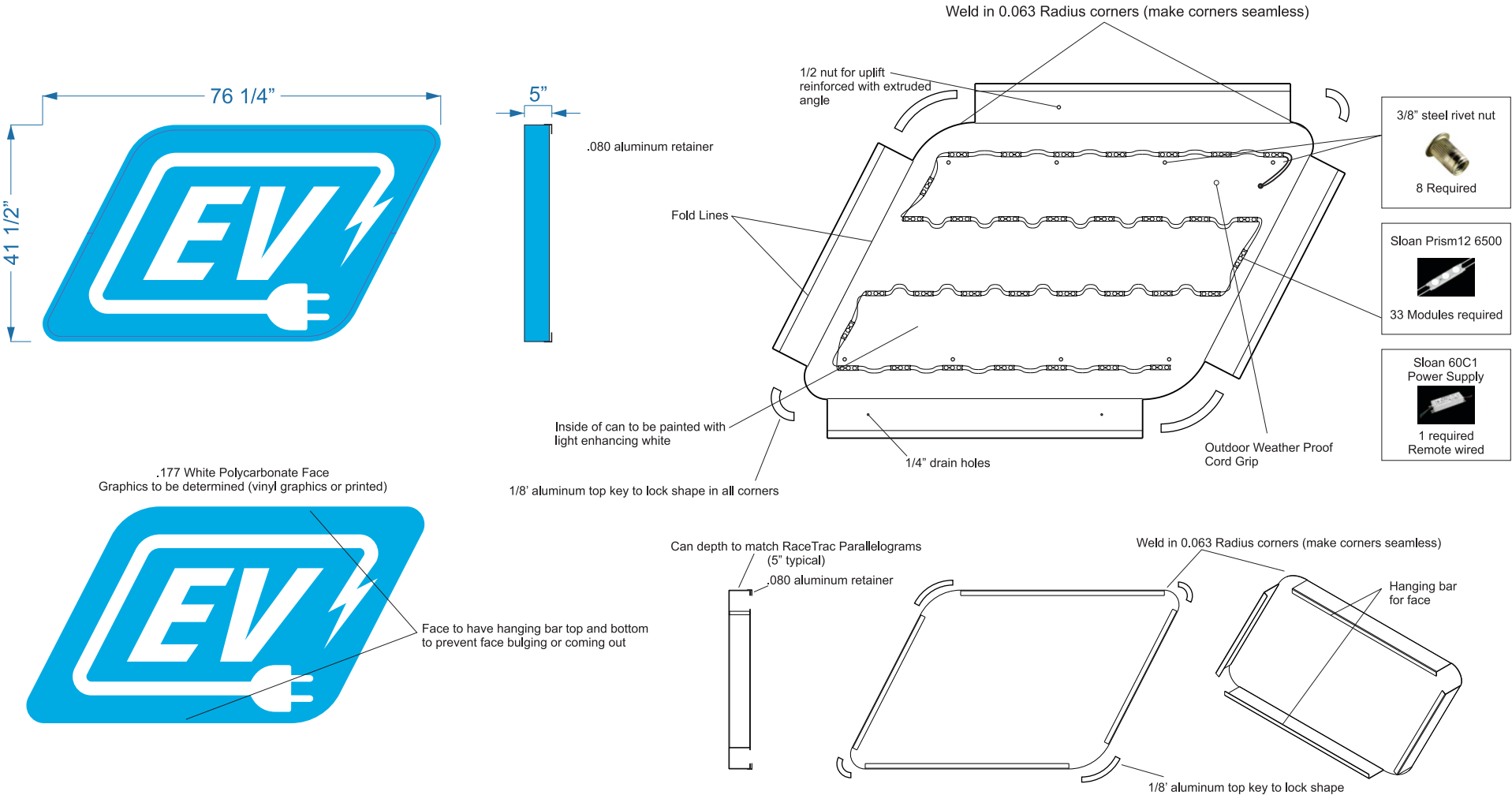
MOUNTED ON BOLLARDS



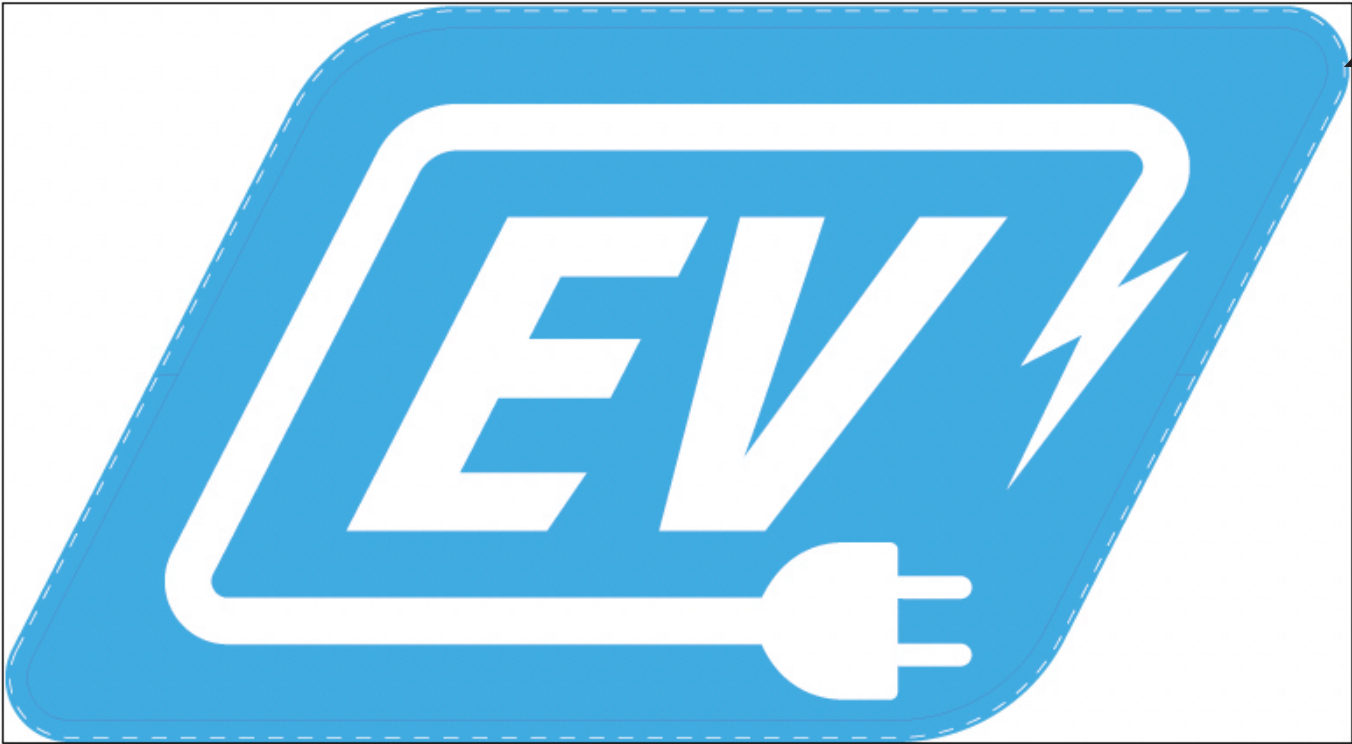
18" x 36" aluminum face sign, double sided, with 1" aluminum square tube frame, 1/8" aluminum faces, bent three sides to overlap tube frame, pop riveted top and bottom. 3" x 4" x .25" mounting plates top and bottom.



RaceTrac EV sign, quantity (2), EV1, EV2



This proof is for your approval on dimensions and layout (not for color accuracy or resolution). We would love your response within 6 business hours, (Flashprint orders by 4:00 pm CST) otherwise it may be necessary to alter the ship date.



XXXXXXXXXX

Substrate	Clear
Laminate	Matte

XXXXXX

	Height x Width
Cabinet Size	3'5.5" x 6'4.25"
VO Size	3'5.5" x 6'4.25"
Overall Size	3'6" x 6'4.75"
Bleed Size	0.25"
Sizing Notes:	

XXXXXXXXXXXXXX

PureColor™:	Yes
-------------	-----

Color Recipe

Color Notes:

XXXXXXXXXXXXXX

Seams

Location

Overlap

Pole Pockets

Location

Grommets

Location


Finishing Notes:

Dashed line shown
will not print

Job Number:

Quantity

Date:

 (651) 222-8440
(800) 336-1224

AS

File Name(s): RaceTrac EV Logo Sign - White 4.21.23.pdf