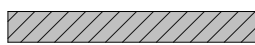
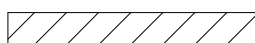


C:\Users\stephanie.griffith\Documents\Revit\Central Locals\1220789_Riverline Park_2023-03-16_ARCH_v21_Stephanie.griffith\GUKRN.rvt 5/21/2024 2:49:25 PM

WALL LEGEND

-  FULL HEIGHT WALLS (NO RATING)
-  WALLS 6" ABOVE CEILING (NO RATING)

SHEET NOTES

- SEE SHEET A-001 FOR GENERAL NOTES.
- SEE SHEET A-001 FOR SYMBOLS AND MATERIALS.
- SEE SHEET A-002 FOR TYPICAL MOUNTING HEIGHTS, LOCATIONS AND DETAILS.
- SEE SHEET A-005 FOR PARTITION TYPES.
- SEE SHEET A-601 FOR DOOR SCHEDULE AND TYPES.
- DIMENSIONS OF EXTERIOR WALLS ARE TO INSIDE FACE OF STUD OR EXTERIOR FINISH FACE U.N.O.
- DIMENSIONS OF INTERIOR WALLS AND PARTITIONS ARE TO FACE OF STUD, FACE OF CMU OR FACE OF IMP U.N.O.
- DOOR OPENINGS SHALL BE LOCATED @ 8" FROM FACE OF ADJACENT PARTITION IN CMU PARTITIONS OR 5" FROM FACE OF PARTITION IN STUD AND PANEL PARTITIONS, U.N.O.
- CONTRACTOR SHALL LOCATE BLOCKING AND BACKING AS REQUIRED FOR WALL MOUNTED EQUIPMENT, CASEWORK/MILLWORK AND FURNISHINGS
- ALL COUNTER TOPS TO BE STAINLESS STEEL, TO BE CONFIRMED BY OWNER

POND

3500 Parkway Lane
Suite 500
Peachtree Corners
Georgia 30092

Copyright © 2022 by Pond & Company. All rights reserved. No copying or duplication of these documents is allowed without the expressed written agreement of Pond & Company.

EOR/AOR SEAL

CLIENT INFORMATION



PROJECT NAME

**RIVER LINE
PARK SPLASH
PAD**

LAND LOT(S) 6091 OF
THE 18TH DISTRICT,
SECTION 170

6043 OAKDALE RD
SOUTHEAST

DRAWING ISSUE

DATE

DESCRIPTION

MARK

DESIGNED BY: SC
DRAWN BY: SC
CHECKED BY: MD
SUBMITTED BY: ST
DATE: 03/18/2024
PROJECT #: 1220789

SHEET TITLE

**RESTROOM
BUILDING FLOOR
PLAN**

SHEET NUMBER

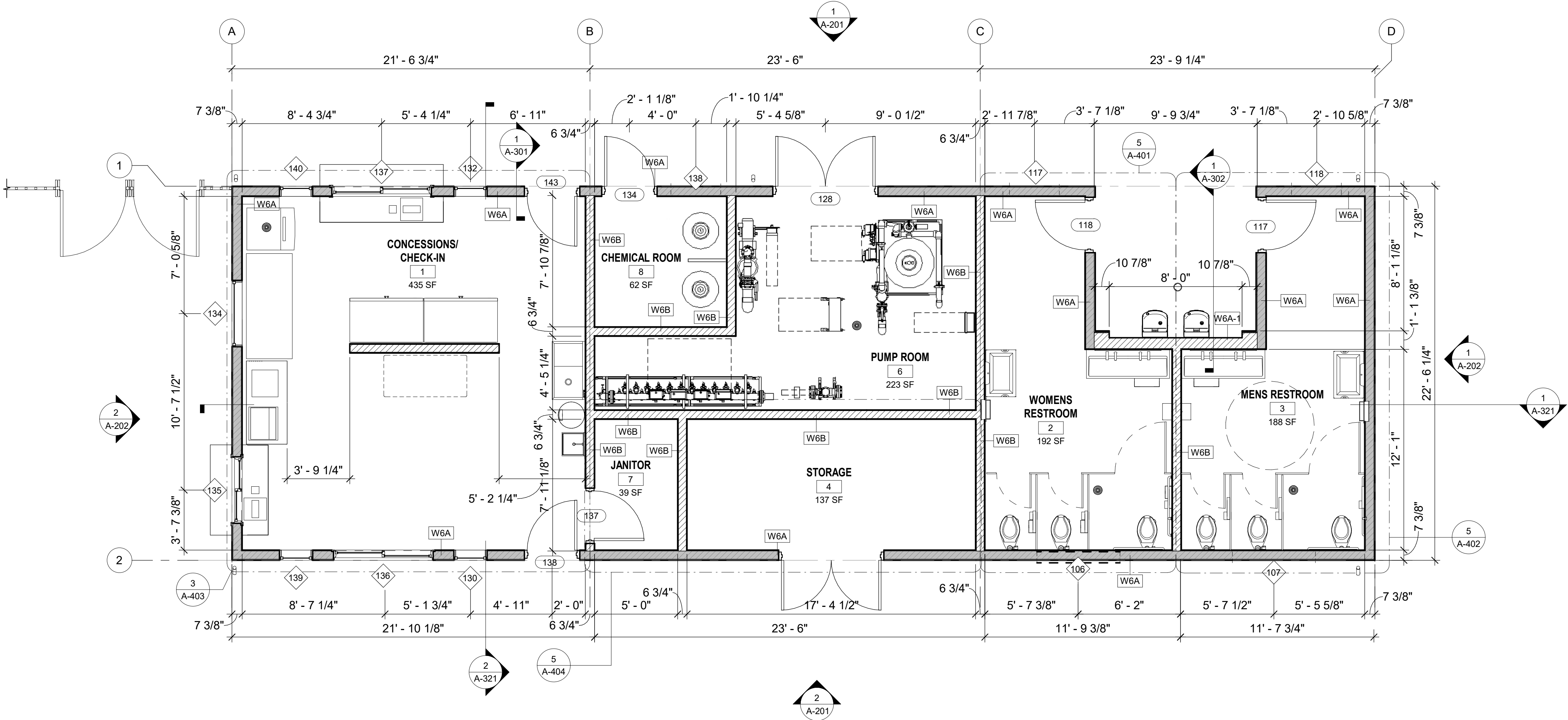
A-101

ORIGINAL SHEET SIZE:
22" X 34"

0 2' 4' 8'
SCALE: 1/4" = 1'-0"



ISSUED FOR PERMIT



1 RESTROOM BUILDING FLOOR PLAN

SCALE: 1/4" = 1'-0"