



# COMMUNITY RISK ASSESSMENT: STANDARDS OF COVER PRESENTATION

[www.smyrnacityfire.com](http://www.smyrnacityfire.com)

# Planning



The diagram is a stylized representation of a classical building facade. It features a triangular pediment at the top, a horizontal entablature below it, and four vertical columns in the center. Each column has a different color and a label written vertically inside it. The columns rest on a base consisting of two horizontal layers. The background is a faded image of a brick building.

**CRA : SOC**

**Strategic Plan**

**Budget**

**Master Plan**

**Continuous Improvement**

# CRA:SOC Process

- **December 2022:**
  - Engaged DYNAMIX CONSULTING
- **March 2024:**
  - Published Document
    - Based on:
      - Industry Standards
      - Best Practices
      - Recognized Standards
      - CPSE Methodology
      - Federal, State - local mandates







# CRA:SOC

## Benefits

- Comprehensive service appraisal
- Gap analysis
- Establishes benchmarks
- Measures performance

# **CRA:SOC**

## **Agency Evaluation**

- Data Collection & Analysis:
  - Organizational
  - Operational
  - Staffing
  - GIS/Mapping Data
  - Stakeholder Input

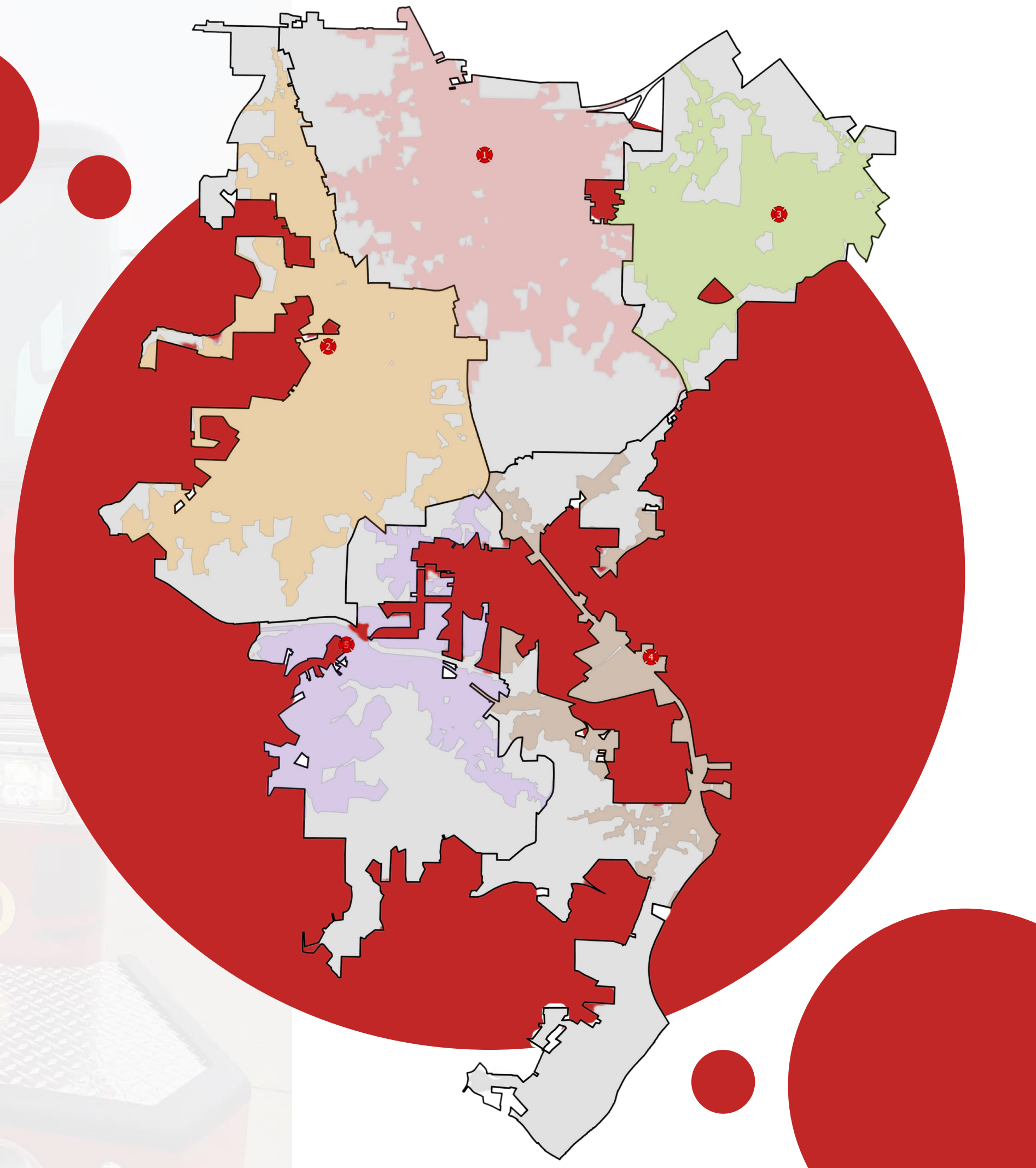




# CRA:SOC

## Our Community

- Area Characteristics
  - History
  - Service area
  - Geographic planning zones
  - Road miles
  - Natural characteristics



# **CRA:SOC**

## **The Human Element**

### **Socio-Economic Factors**



**Population Density**





# **CRA:SOC**

## **Growth & Transformation**



**Development**

**Service Infrastructure**



**Transportation**



**Fire/EMS/Rescue/Hazmat**

**Emergency  
Management**

**CRR**

**Public Education**



**Fire Prevention**

**Fire Investigation**

**Programs and  
Services**

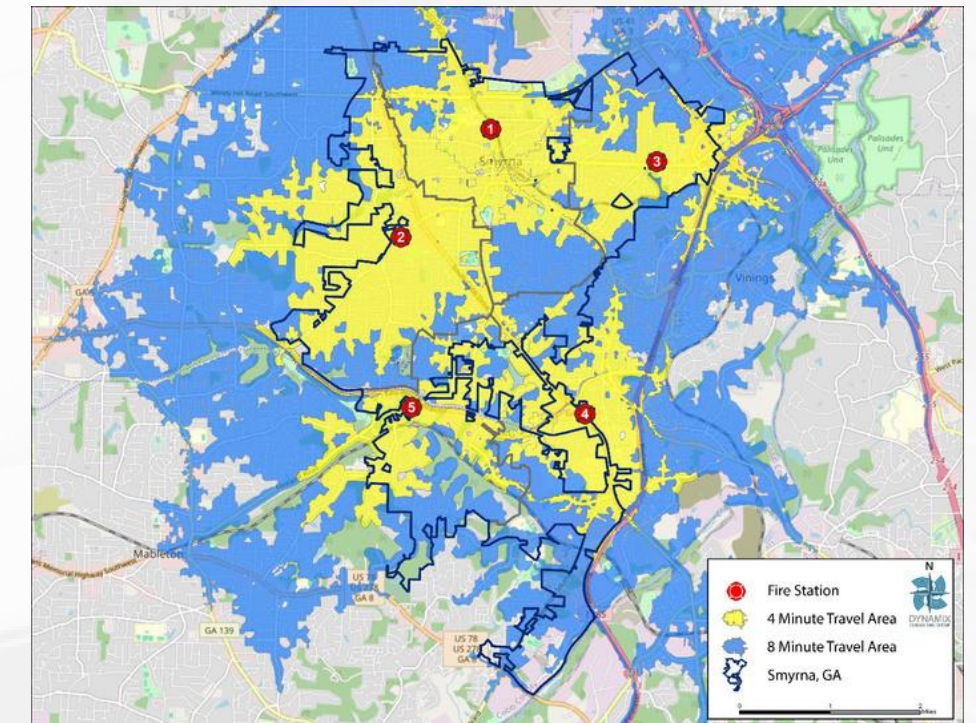
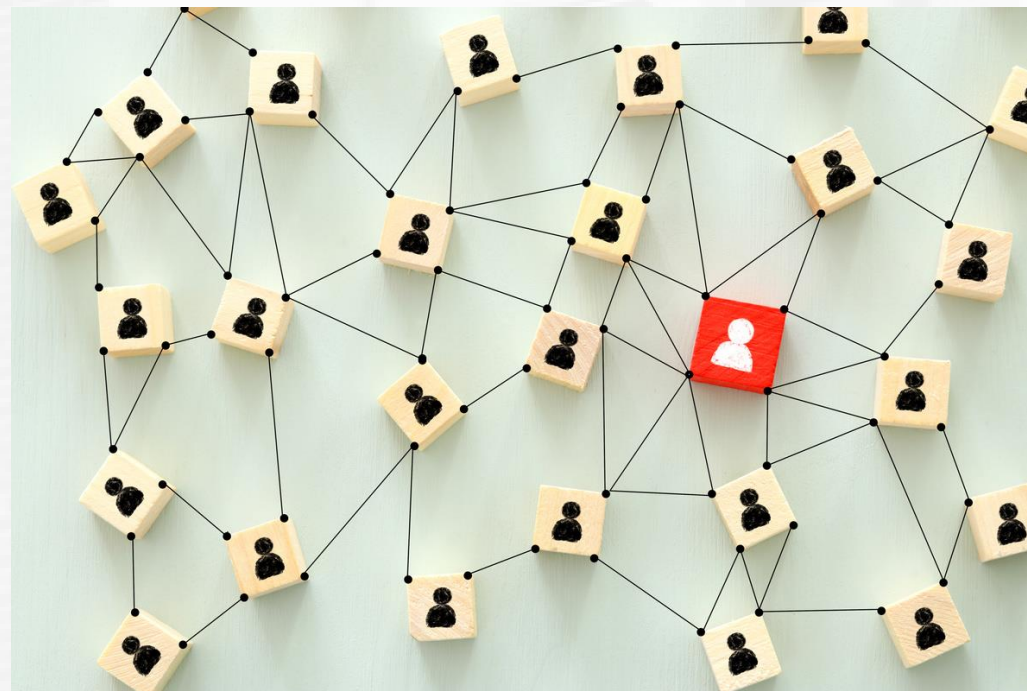
# CRA:SOC

## Deployment & Coverage



**Points of Service**

### Minimum Resources



**Response Areas**



# CRA:SOC

## Priorities

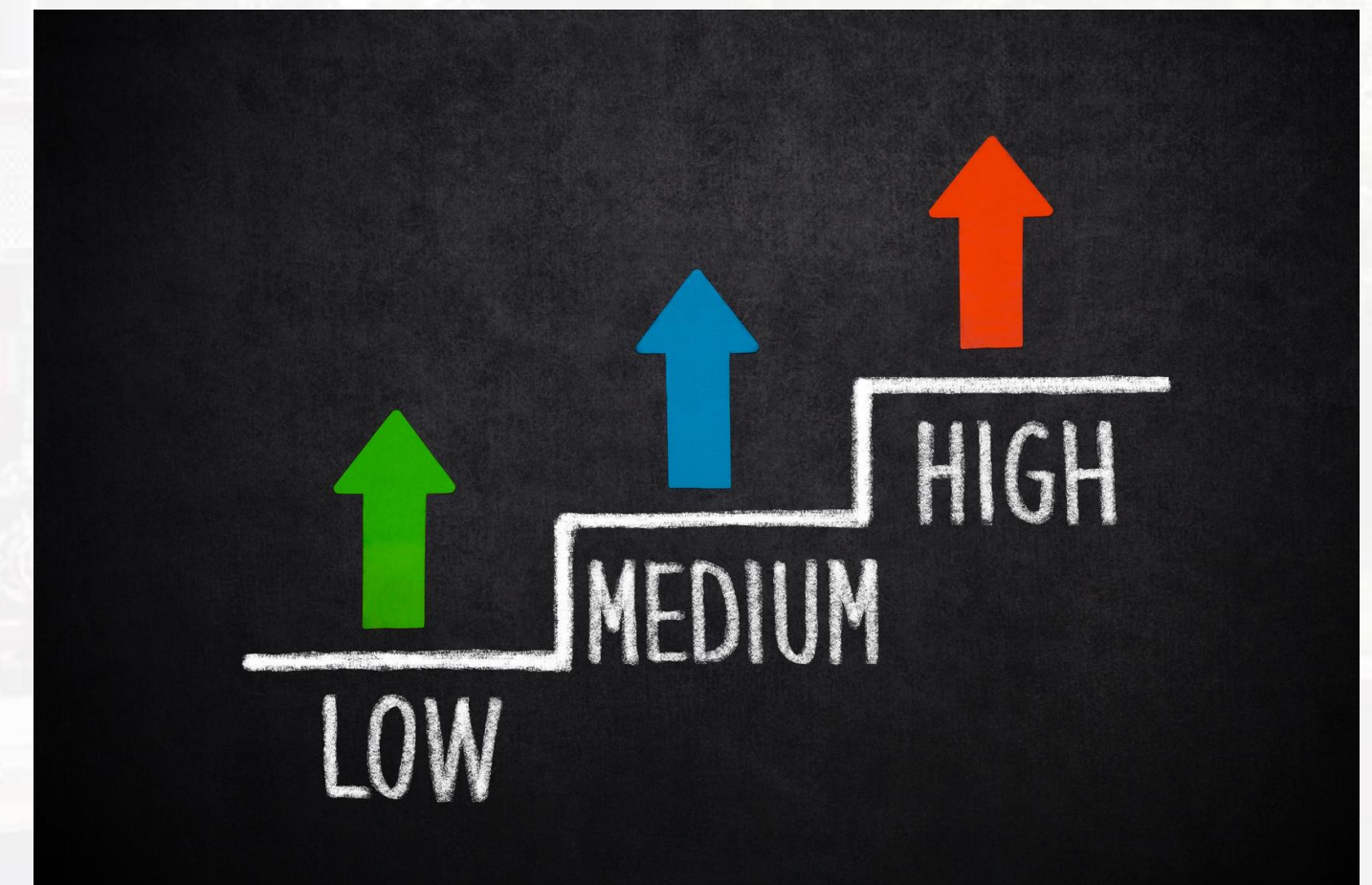




# CRA:SOC

## Risk Assessment

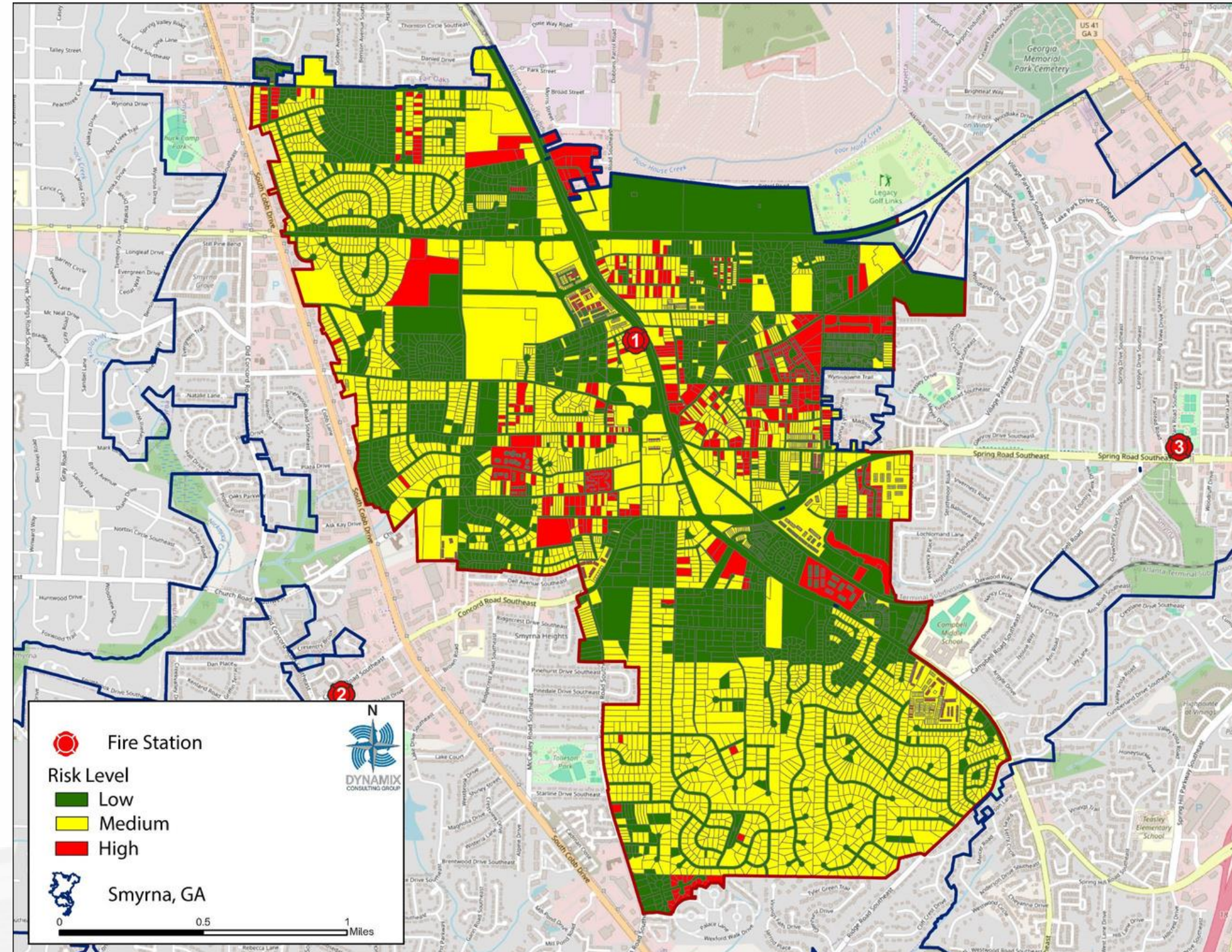
- Critical Task Analysis
- Classify & Categorize Risk



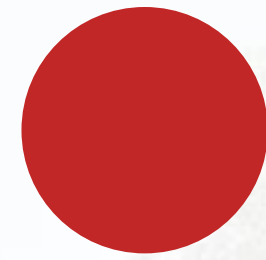


# Ward 2

## Risk Assessment





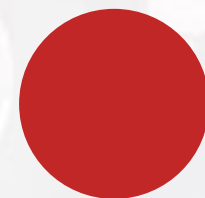


# CRA:SOC

## System Performance



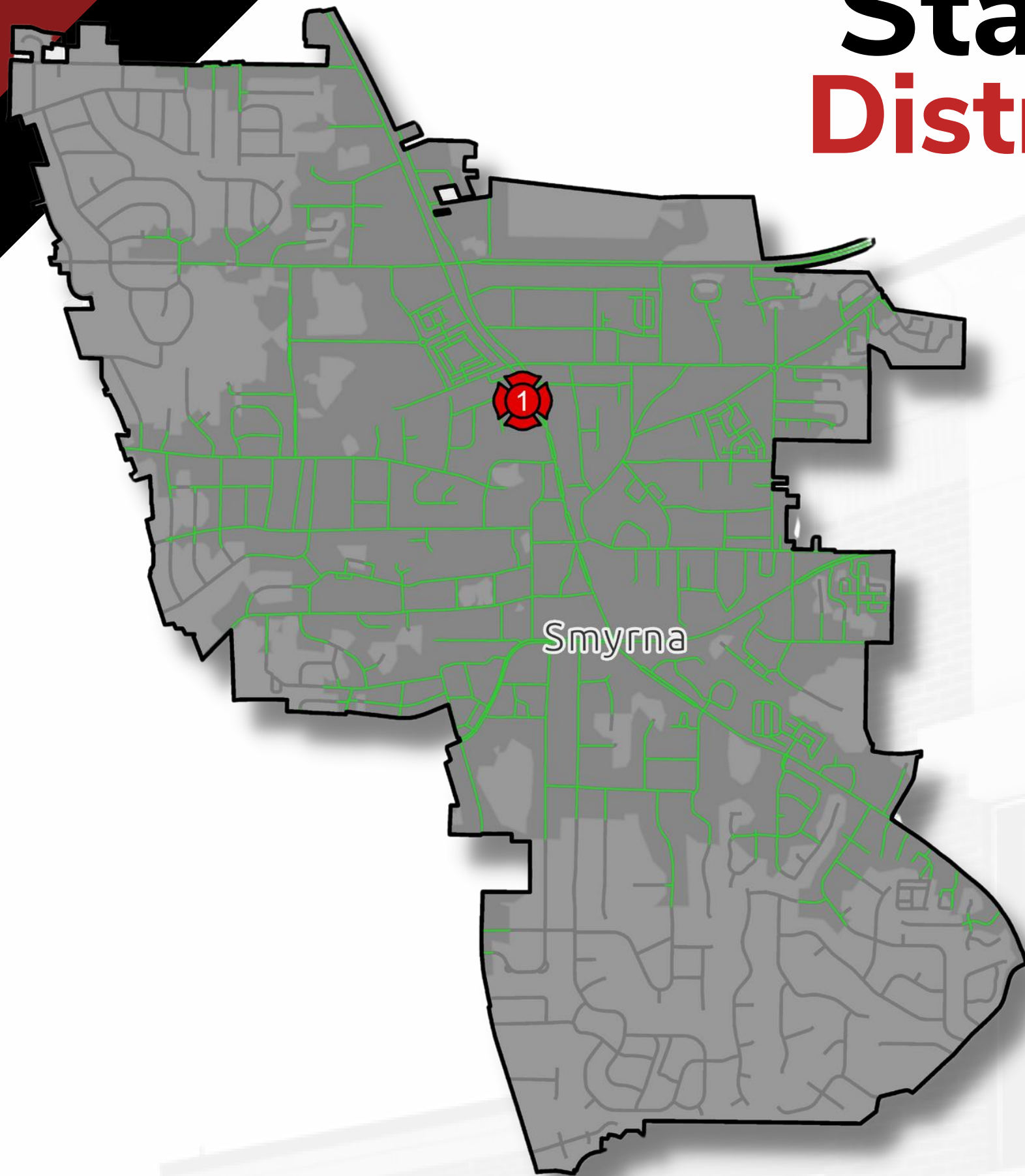
**Demand**  
**Distribution**  
**Concentration**  
**Reliability**





# Station 1

## Distribution



**Service Coverage Area**  
4.2 sq mi | **75.3** miles of roadway



**Predicted Travel Capability**  
Truck 1 can cover **50.6** miles of road base within **4 minutes**.



**Coverage Percentage**  
**67.0%** | 2.8 sq mi



# CRA:SOC

## Service Delivery Evaluation

Call Processing

Turnout Time

Travel Time

Response Time

Total Response Time



# CRA:SOC

**Performance Maintenance & Improvement**





Questions?

