

3024 TRAE COURT  
LOWER LEVEL FLOOR PLAN

SCALE : 1/8" = 1'-0"

3024 TRAE COURT  
ATTIC LEVEL FLOOR PLAN

SCALE : 1/8" = 1'-0"

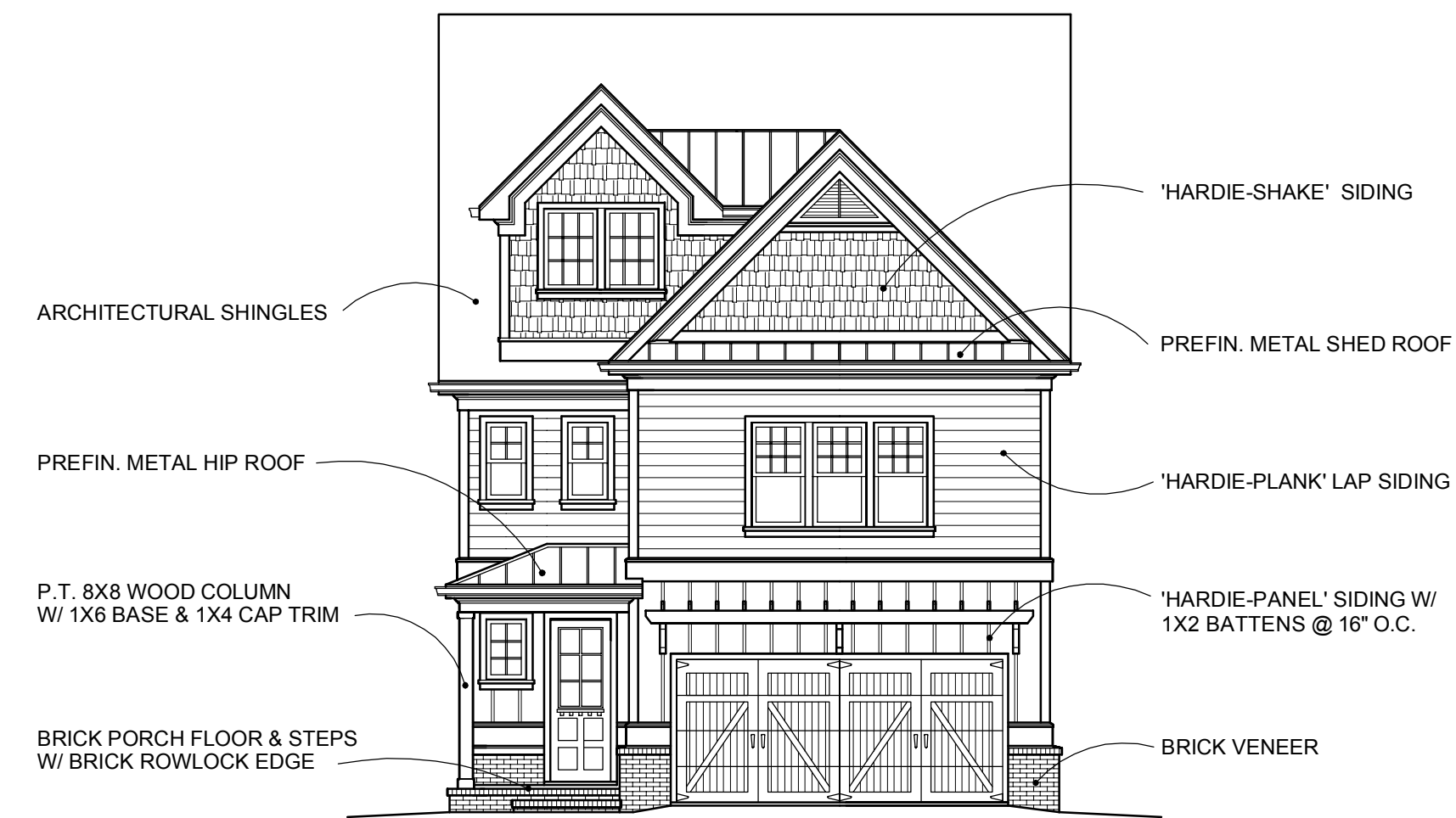
HOUSE AREA SUMMARY		
MAIN LEVEL	=	647 sf
UPPER LEVEL	=	1,022 sf
ATTIC LEVEL	=	811 sf
LOWER LEVEL	=	579 sf
TOTAL HEATED AREA		= 3,059 sf
GARAGE	=	443 sf
FRONT PORCH	=	42 sf
DECKS	=	408 sf
UTILITY	=	22 sf

3024 TRAE COURT  
UPPER LEVEL FLOOR PLAN

SCALE : 1/8" = 1'-0"

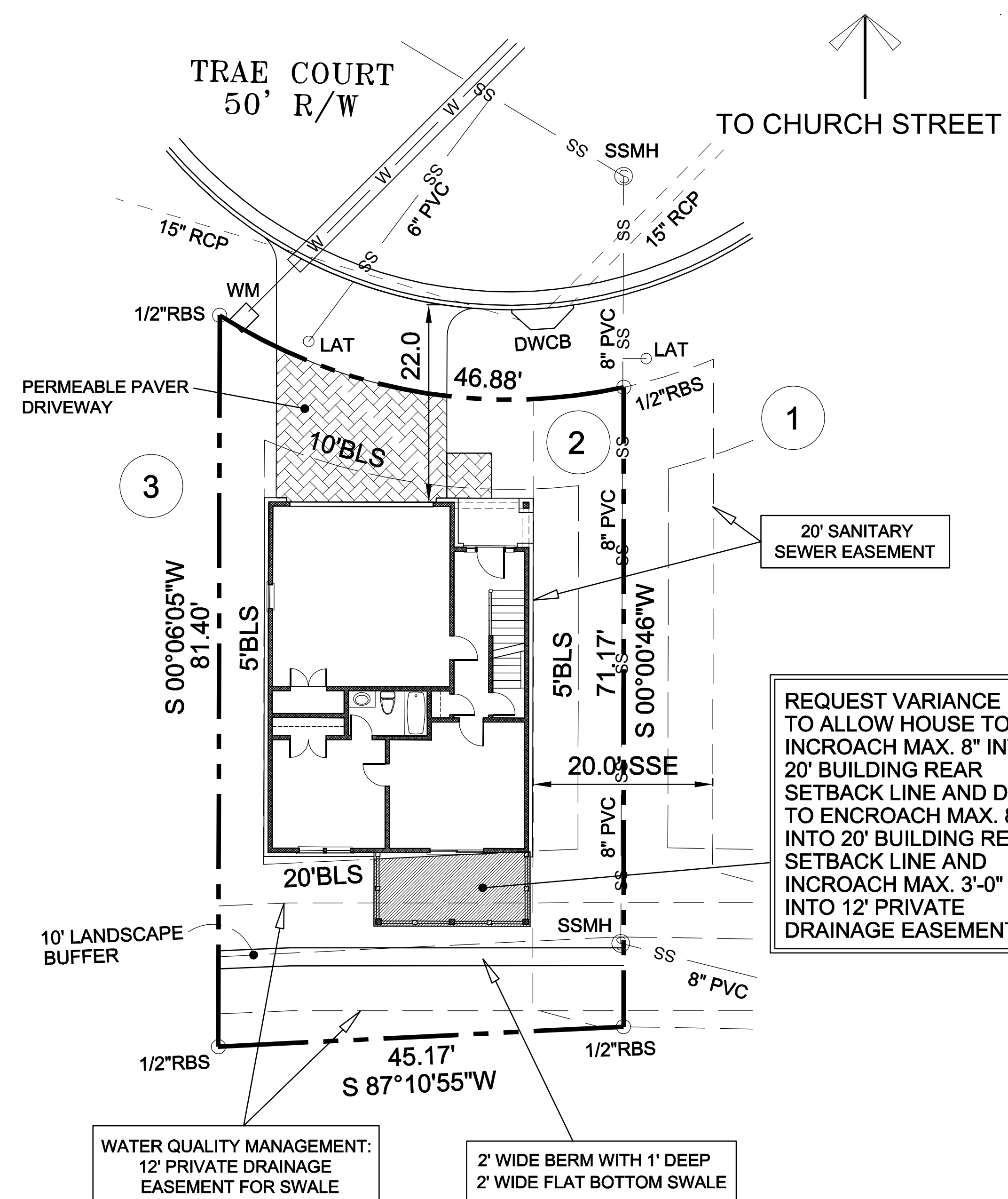
3024 TRAE COURT  
MAIN LEVEL FLOOR PLAN

SCALE : 1/8" = 1'-4"



3024 TRAE COURT  
FRONT ELEVATION

SCALE : 1/8" = 1'-0"



TOTAL SITE AREA = 3,298.01 SQ. FT.  
LOT COVERAGE AREA = 1,321 SQ. FT.  
= .40

# 3024 TRAE COURT SITE PLAN

SCALE : 1" = 10'-0"

LAND LOT : 487  
DISTRICT : 17  
ZONING : RM-10 (CONDITION)

[illegible]

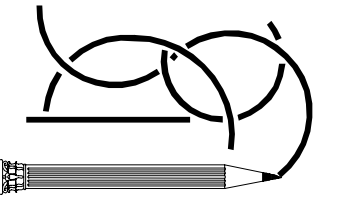
These Drawings Are  
Instruments of Service  
and Are The Property  
of The Architect.  
These Drawings May Not  
Be Reproduced or Used  
Without His Expressed  
Written Permission.

**David E. Surface - Architect, P.C.**

936 Besse Way  
Locust Grove, Georgia 30248

Phone: 678-414-4330

E-Mail: [desarch@bellsouth.net](mailto:desarch@bellsouth.net)



SEAL

PROJECT TITLE

SPECULATIVE RESIDENT  
3024 TRAE COURT

LOT 2

SMYRNA, GEORGIA 30080

for  
ARI KOWALSKI

JOB NO. 22-10-L2	DATE 8-5-24
SHEET TITLE SITE PLAN, FLOOR PLANS & FRONT ELEVATION	
SHEET NO.  <b>A-1</b>	OF  <b>1</b>  SHEETS